

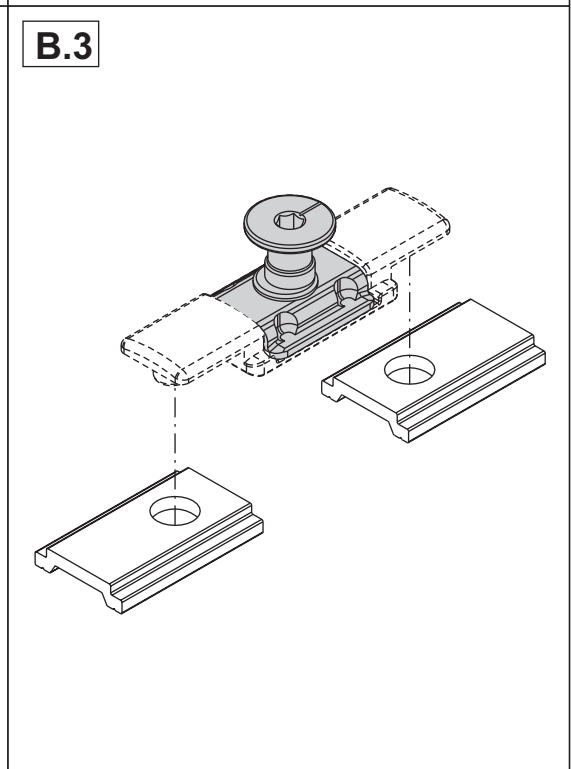
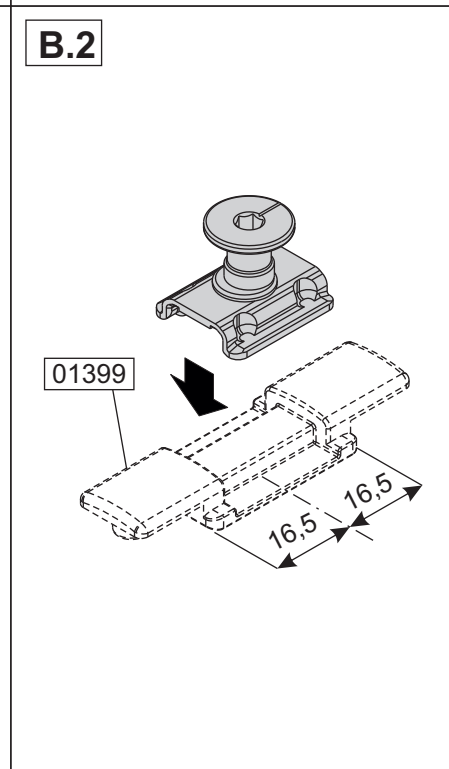
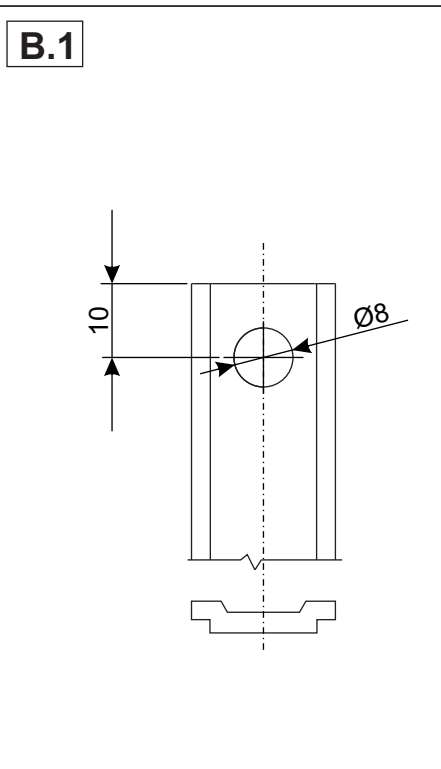
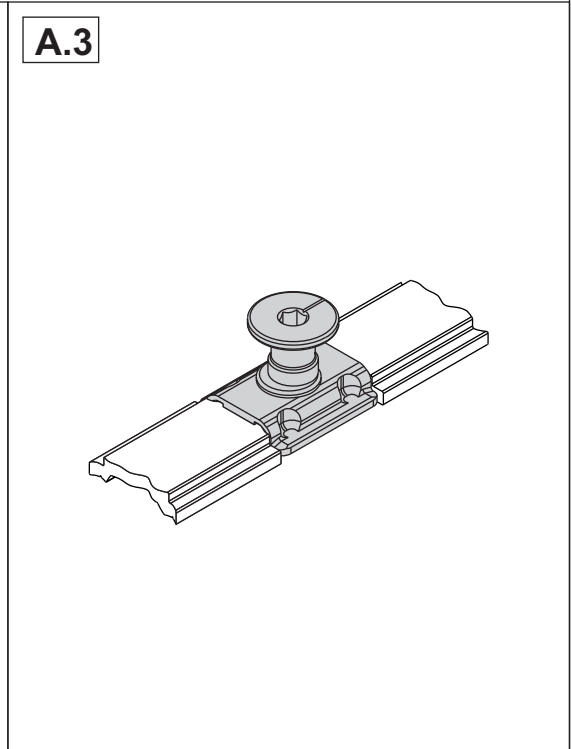
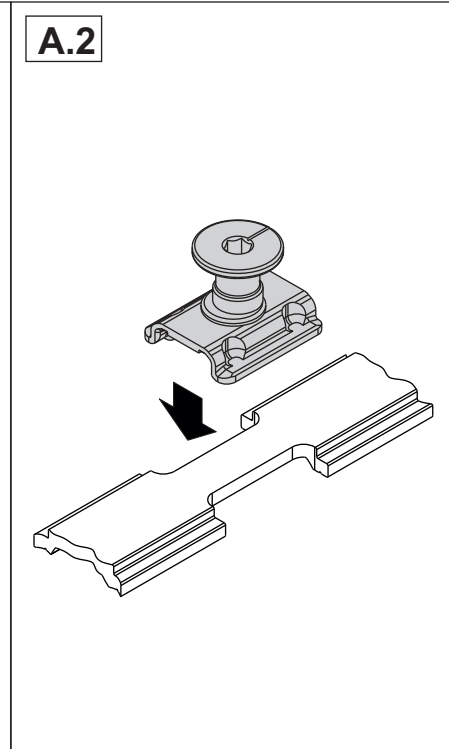
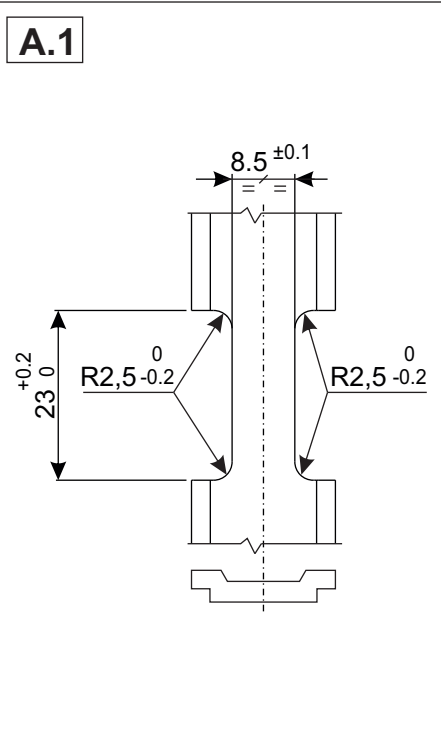
L'applicazione dell'articolo è da realizzarsi ad anta smontata.

The application of the component is to be carried out with sash dismantled.

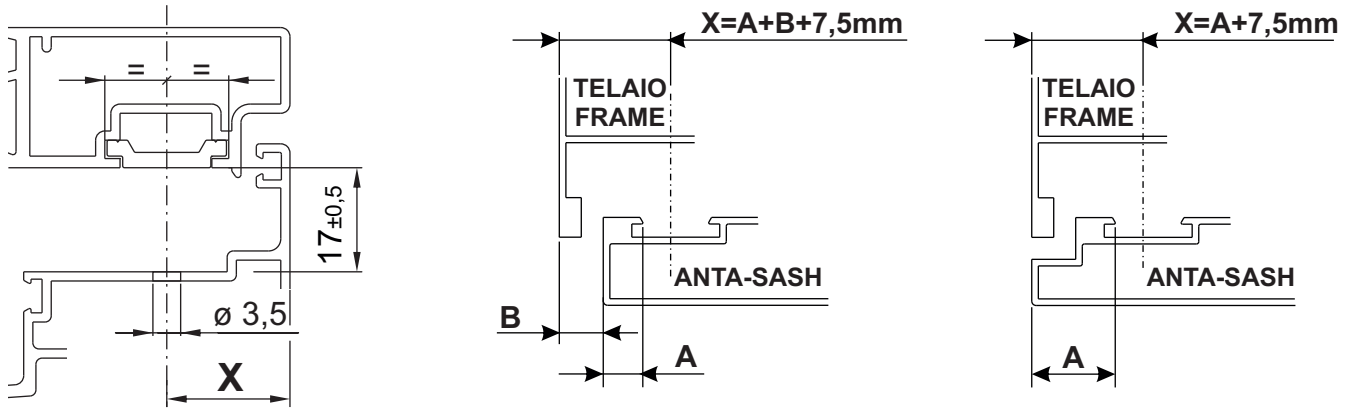
La aplicación del artículo se hace con la oja desmontada.

L'application de l'article doit être effectuée a vantail démantelé.

Die Anwendung vom Artikel soll mit demontiertem Fluegel durchgeführt werden.



4



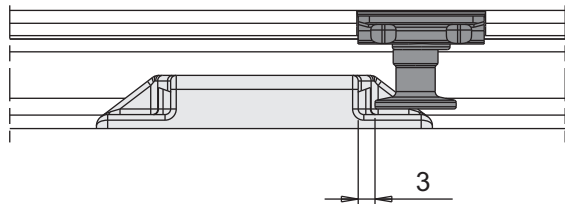
Posizionamento dell'incontro rispetto al noddolino a fungo in situazione di apertura ad anta.

Positioning of the keep with respect to the mushroom-shaped pawl when the window is opened side-hung.

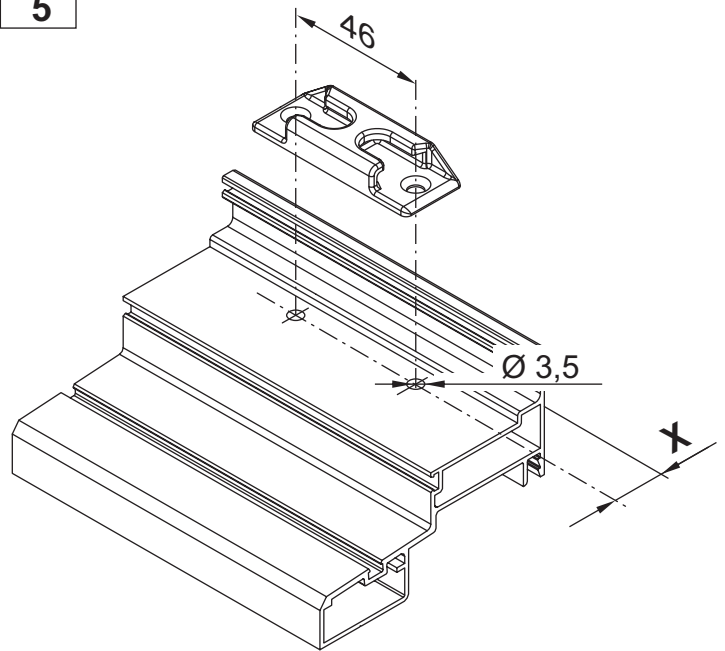
Positionnement du conduit par rapport à la patte type champignon-ouverture "à la française".

Colocacion del contacto respecto al pasador de tipo a hongo en situacion de apertura de hoja.

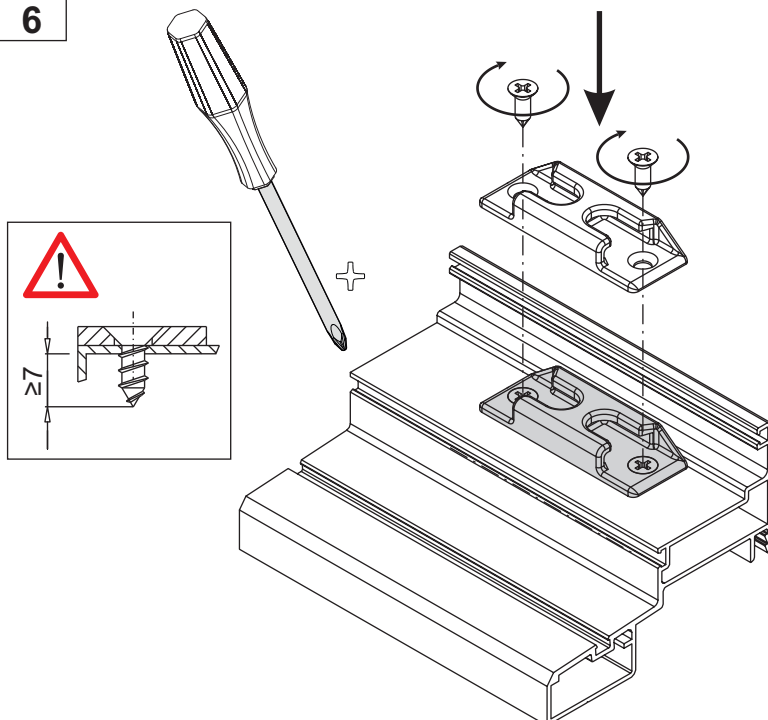
Positionierung des Schließbleches in Bezug auf die Pilzförmige nase bei geöffnetem Fenster.



5



6



REGOLAZIONE - ADJUSTMENT - RÉGLAGE
REGULACIÓN - VERSTELLUNG

