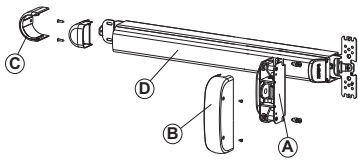


AP002 TOP-BOTTOM



Functions

TOUCH-BAR type panic exit device for surface mounting.

Online data sheet



Technical Features

The top-bottom version AP002 system consists of:

- the reversible mechanism (A) without a lateral spring latch that can be combined with additional locking mechanisms and the mechanism protection plug (B)
- the pre-assembled round coupling shim (C)
- the base with push-bar and mechanism (D), with assembled front and rear caps

The top-bottom AP002 system is to be combined with the additional locking mechanisms.

This version is ideal for use on fire doors when paired with additional fastening mechanisms that are specific for this use.

Materials

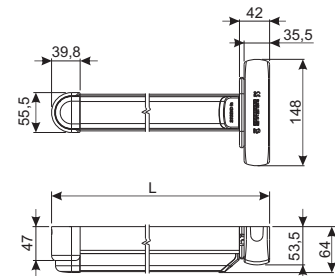
Mechanism in zinc plated steel

Painted steel mechanism protection plug

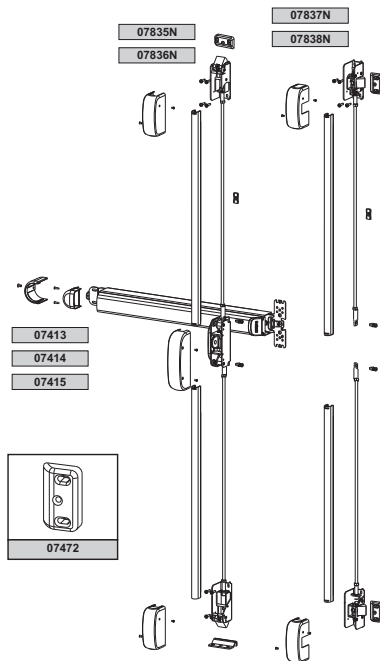
Brackets and bracket stop blocks in zamak

Shimming plate in zinc plated steel

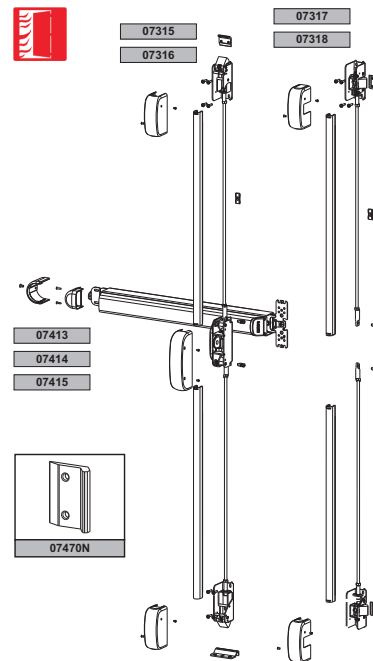
Zinc plated steel fixing screws and grub screws



Standard version



Fire version



Item code	Description	Version	Bar length L [mm]	Sash width [mm]	Base Raw	Anodised Elox	Painted	Trend/Gold Brass	Pieces per pack
07413	PANIC EXIT DEVICE AP002 TOP/BOTTOM	SHORT	840	up to 1000			X		1
07414	PANIC EXIT DEVICE AP002 TOP/BOTTOM	AVERAGE	1170	from 1001 to 1200			X		1
07415	PANIC EXIT DEVICE AP002 TOP/BOTTOM	LONG	1300	from 1201 to 1500			X		1