

## DRIVING RODS AND LOCKING POINTS GS3000

### Functions

Driving rods and locking points to fit to frame for GS3000 lift and slide system.

Online data sheet



### Technical features

- Drive gears
- Lift locks for sashes from 150 to 400 kg (with additional pulleys) to select according to profile width, weight and height of sash.
- Available in versions with 27.5 mm and 37.5 mm backset.
- 10 mm square pin.
- Available in 6 alternative heights for each version.
- Compatible with 150/300 kg pulleys and with window handles with 80 mm fixing c/c distance.
- Pre-slotted front plate with up to 5 positions for combination with the locking points.
- Cover extension available for all versions of drive gear, to fit to the casement in the hardware slot that the drive gear does not reach.
- Allows the construction of sashes up to 3750 mm in height.

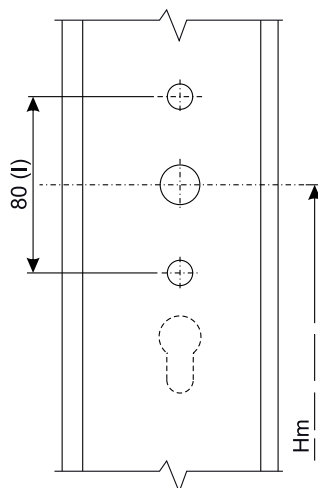
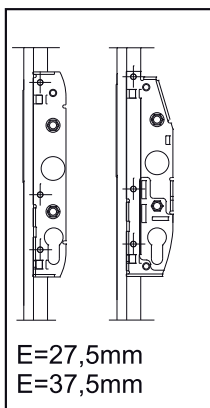
### Locking points

- Locking points to fit to frame in correspondence with the slots of the drive gear installed on the sash.
- Available in several version to be selected in accordance with the profile.
- When combined with the appropriate shims for the profile the locking points ensure an optimal sash / frame seal.
- The number of locking points required depends on the sash height and the selected drive gear.

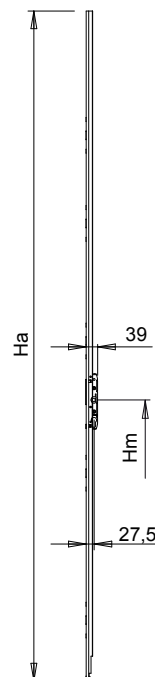
### Materials

- Drive gears
  - Anodised aluminium front plate
  - Internal sliding rod in stainless steel
  - Body of zinc plated steel
  - Internal parts in zinc plated steel and brass
  - Anodised aluminium extension cover
- ### Locking points
- Nickel-plated brass locking point
  - Stainless steel shims
  - Nylon adapter (for opposing sashes version)
  - Stainless steel mounting plate (for opposing sashes version)
  - Stainless steel fixing screws

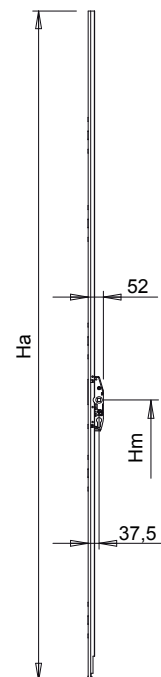
Machining on profile



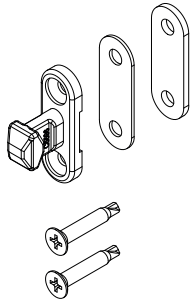
Drive gear with E = 27.5 mm



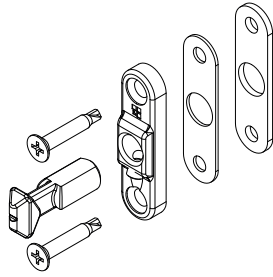
Drive gear with E = 37.5 mm



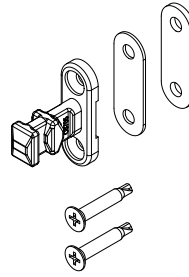
Fixed locking point



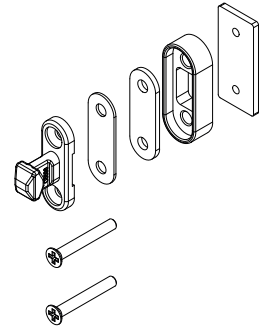
13-25 mm adjustable locking point



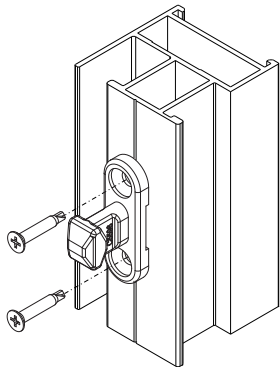
Locking point with Micro-ventilation



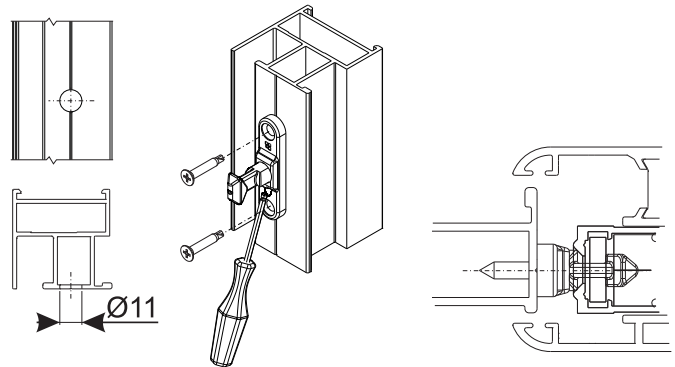
Locking point for opposing sashes



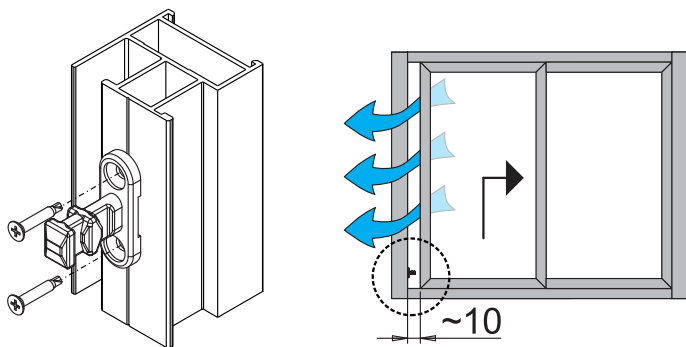
Assembly of fixed locking point



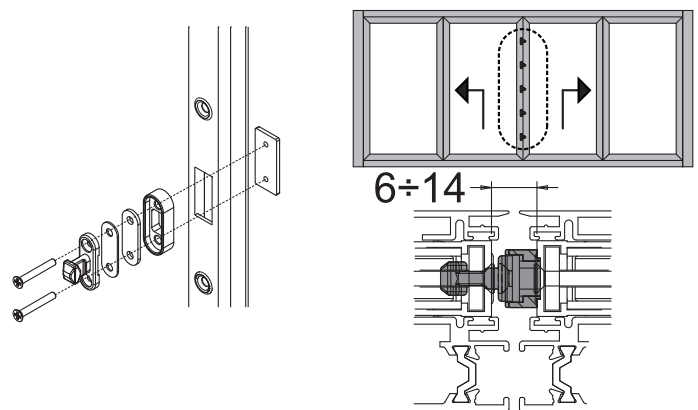
Assembly of 13-25 mm adjustable locking point



Assembly of Micro-ventilation locking point



Assembly of locking point for opposing sashes



## GS3000 - 300/400 LIFT AND SLIDE

Item code	Description	Backset	Drive gear height (Ha)	Window handle positions (Hm)	Compatible with pulleys	Compatible with window handle C/C distance (l)	Key	Base Raw	Anodised Elox	Painted	Trend/Gold Brass	Pieces per pack
07105	DRIVE GEAR KEY H170 E37.5-GS3000	37.5 mm	1680 mm	354 mm	300/22	80 mm	YES	X				1
07106	DRIVE GEAR KEY H190 E37.5-GS3000	37.5 mm	1880 mm	654 mm	300/22	80 mm	YES	X				1
0710701	DRIVE GEAR KEY H200 E37.5-GS3000	37.5 mm	1980 mm	954 mm	300/22	80 mm	YES	X				1
0710801	DRIVE GEAR KEY H230 E37.5-GS3000	37.5 mm	2280 mm	954 mm	300/22	80 mm	YES	X				1
0710901	DRIVE GEAR KEY H260 E37.5-GS3000	37.5 mm	2580 mm	954 mm	300/22	80 mm	YES	X				1
0711001	DRIVE GEAR KEY H300 E37.5-GS3000	37.5 mm	2980 mm	954 mm	300/22	80 mm	YES	X				1
07133	DRIVE GEAR KEY H170 E27.5-GS3000	27,5 mm	1680 mm	354 mm	300/22	80 mm	YES	X				1
07134	DRIVE GEAR H190 E27.5-GS3000	27,5 mm	1880 mm	654 mm	300/22	80 mm	YES	X				1
0713501	DRIVE GEAR KEY H200 E27.5-GS3000	27,5 mm	1980 mm	954 mm	300/22	80 mm	YES	X				1
0713601	DRIVE GEAR KEY H230 E27.5-GS3000	27,5 mm	2280 mm	954 mm	300/22	80 mm	YES	X				1
0713701	DRIVE GEAR KEY H260 E27.5-GS3000	27,5 mm	2580 mm	954 mm	300/22	80 mm	YES	X				1
0713801	DRIVE GEAR KEY H300 E27.5-GS3000	27,5 mm	2980 mm	954 mm	300/22	80 mm	YES	X				1
07161	GS3000 ROD EXTENSION COVER	-	650 mm	-	-	-	NO	X				5
07122	GS3000 WINDOW HANDLE DAMPER	-	-	-	-	-	-	X				10

Item code	Description	Range	Base Raw	Anodised Elox	Painted	Trend/Gold Brass	Pieces per pack
07149	FIXED LOCKING POINT	13 - 16 mm	X				10
07150	ADJUSTABLE LOCKING POINT	13 - 25 mm	X				10
07151	MICRO-VENTILATION LOCKING POINT	13 - 16 mm	X				10
07152	OPPOSING SASHES LOCKING POINT	13 - 16 mm	X				10



## DRIVING RODS AND LOCKING POINTS GS3000

### Functions

Driving rods and locking points to fit to frame for GS3000 lift and slide system.

Online data sheet



### Technical features

#### Drive gears

Lift locks for sashes from 150 to 400 kg (with additional pulleys) to select according to profile width, weight and height of sash.

Available in versions with 27.5 mm and 37.5 mm backset.

10 mm square pin.

Available in 6 alternative heights for each version.

Compatible with 150/300 kg pulleys and with window handles with 80 mm fixing c/c distance.

Pre-slotted front plate with up to 5 positions for combination with the locking points.

Cover extension available for all versions of drive gear, to fit to the casement in the hardware slot that the drive gear does not reach.

Allows the construction of sashes up to 3750 mm in height.

#### Locking points

Locking points to fit to frame in correspondence with the slots of the drive gear installed on the sash.

Available in several version to be selected in accordance with the profile.

When combined with the appropriate shims for the profile the locking points ensure an optimal sash / frame seal.

The number of locking points required depends on the sash height and the selected drive gear.

### Materials

#### Drive gears

Anodised aluminium front plate

Internal sliding rod in stainless steel

Body of zinc plated steel

Internal parts in zinc plated steel and brass

Anodised aluminium extension cover

#### Locking points

Nickel-plated brass locking point

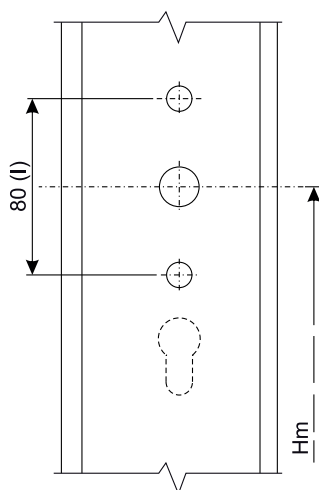
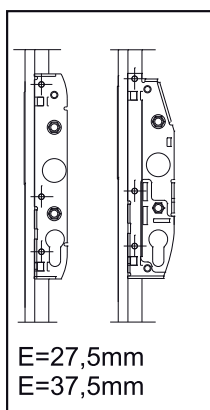
Stainless steel shims

Nylon adapter (for opposing sashes version)

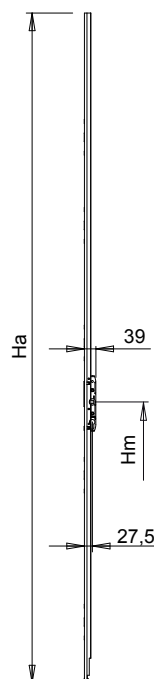
Stainless steel mounting plate (for opposing sashes version)

Stainless steel fixing screws

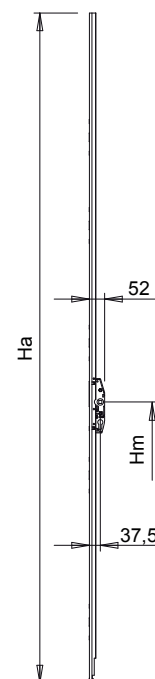
Machining on profile



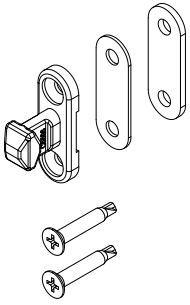
Drive gear with E = 27.5 mm



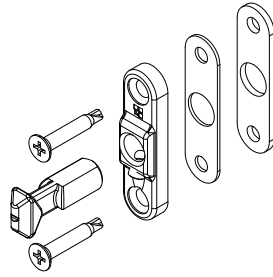
Drive gear with E = 37.5 mm



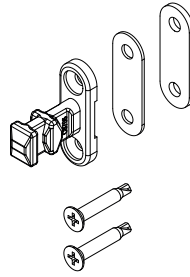
Fixed locking point



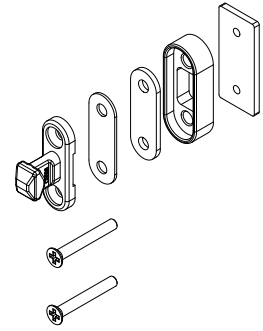
13–25 mm adjustable locking point



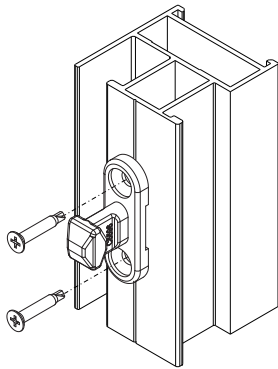
Locking point with Micro-ventilation



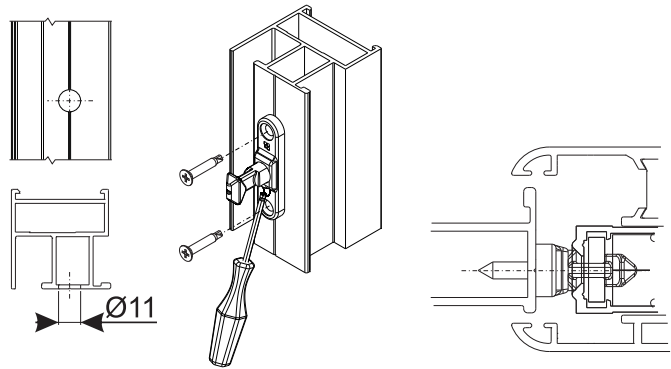
Locking point for opposing sashes



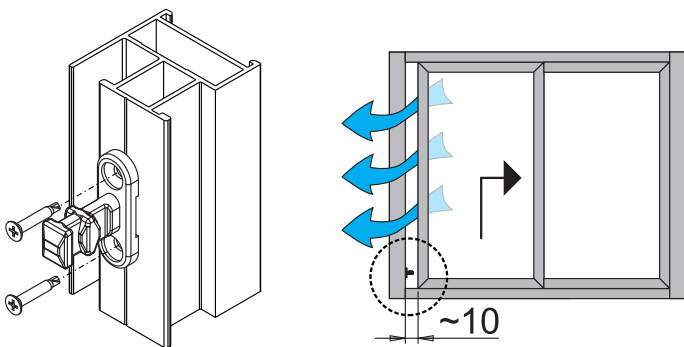
Assembly of fixed locking point



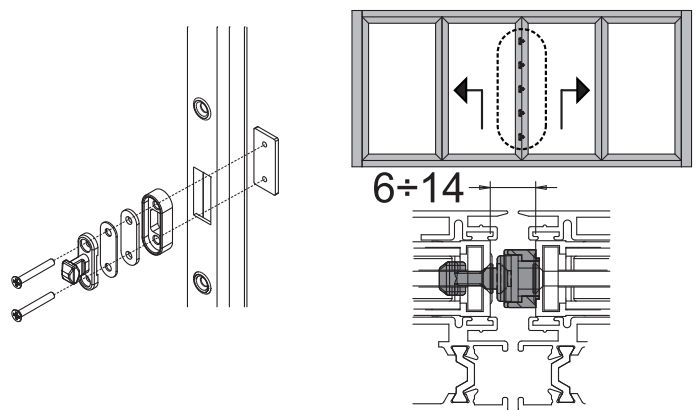
Assembly of 13–25 mm adjustable locking point



Assembly of Micro-ventilation locking point



Assembly of locking point for opposing sashes



## GS3000 - 150 LIFT AND SLIDE SYSTEM

Item code	Description	Backset	Drive gear height (Ha)	Window handle positions (Hm)	Compatible with pulleys	Compatible with window handle C/C distance (l)	Key	Base Raw	Anodised Elox	Painted	Trend/Gold Brass	Pieces per pack
07105	DRIVE GEAR KEY H170 E37.5-GS3000	37.5 mm	1680 mm	354 mm	300/22	80 mm	YES	X				1
07106	DRIVE GEAR KEY H190 E37.5-GS3000	37.5 mm	1880 mm	654 mm	300/22	80 mm	YES	X				1
0710701	DRIVE GEAR KEY H200 E37.5-GS3000	37.5 mm	1980 mm	954 mm	300/22	80 mm	YES	X				1
0710801	DRIVE GEAR KEY H230 E37.5-GS3000	37.5 mm	2280 mm	954 mm	300/22	80 mm	YES	X				1
0710901	DRIVE GEAR KEY H260 E37.5-GS3000	37.5 mm	2580 mm	954 mm	300/22	80 mm	YES	X				1
0711001	DRIVE GEAR KEY H300 E37.5-GS3000	37.5 mm	2980 mm	954 mm	300/22	80 mm	YES	X				1
07133	DRIVE GEAR KEY H170 E27.5-GS3000	27,5 mm	1680 mm	354 mm	300/22	80 mm	YES	X				1
07134	DRIVE GEAR H190 E27.5-GS3000	27,5 mm	1880 mm	654 mm	300/22	80 mm	YES	X				1
0713501	DRIVE GEAR KEY H200 E27.5-GS3000	27,5 mm	1980 mm	954 mm	300/22	80 mm	YES	X				1
0713601	DRIVE GEAR KEY H230 E27.5-GS3000	27,5 mm	2280 mm	954 mm	300/22	80 mm	YES	X				1
0713701	DRIVE GEAR KEY H260 E27.5-GS3000	27,5 mm	2580 mm	954 mm	300/22	80 mm	YES	X				1
0713801	DRIVE GEAR KEY H300 E27.5-GS3000	27,5 mm	2980 mm	954 mm	300/22	80 mm	YES	X				1
07161	GS3000 ROD EXTENSION COVER	-	650 mm	-	-	-	NO	X				5
07122	GS3000 WINDOW HANDLE DAMPER	-	-	-	-	-	-	X				10

Item code	Description	Range	Base Raw	Anodised Elox	Painted	Trend/Gold Brass	Pieces per pack
07149	FIXED LOCKING POINT	13 – 16 mm	X				10
07150	ADJUSTABLE LOCKING POINT	13 – 25 mm	X				10
07151	MICRO-VENTILATION LOCKING POINT	13 – 16 mm	X				10
07152	OPPOSING SASHES LOCKING POINT	13 – 16 mm	X				10