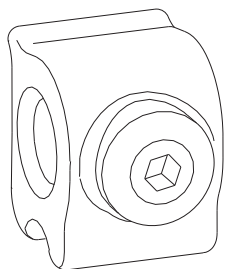


SUPPORT BLOCK



Functions

Component for supporting the pulley connection rod.
For all GS1000 tilt and slide system versions.

Online data sheet

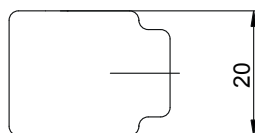
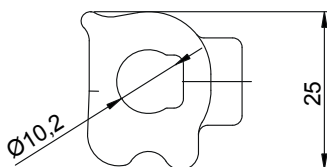


Technical features

The support block is used for sash widths > 1480 mm in order to make the connection rod between the two pulleys more stable.

Materials

Nylon block
Steel mounting grubscrew



Item code	Description	Range [mm]	PROFILE CROSS - SECTION	GS1000-ML	GS1000-HL	GS1000-HD 100	GS1000-HD 160	GS1000-HD 200	Base Raw	Anodised Elox	Painted	Trend/Gold Brass	Pieces per pack
09789	SUPPORT BLOCK	-	-	-	X	X	X	X	X				1