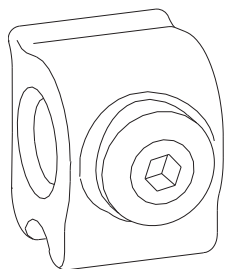


**SUPPORT BLOCK**



**Functions**

Component for supporting the pulley connection rod.  
For all GS1000 tilt and slide system versions.

Online data sheet

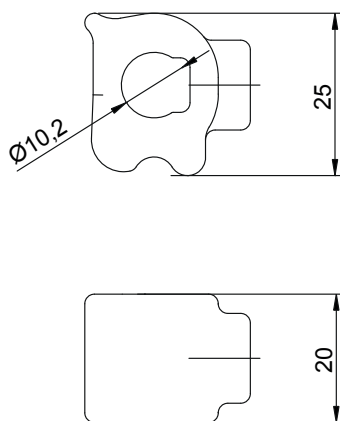


**Technical features**

The support block is used for sash widths > 1480 mm in order to make the connection rod between the two pulleys more stable.

**Materials**

Nylon block  
Steel mounting grubscrew



Item code	Description	Range [mm]	PROFILE CROSS - SECTION	GS1000-ML	GS1000-HL	GS1000-HD 100	GS1000-HD 160	GS1000-HD 200	Base Raw	Anodised Elox	Painted	Trend/Gold Brass	Pieces per pack
09789	SUPPORT BLOCK	-	-	-	X	X	X	X	X				1