

CYLINDER COVER PLATES

Functions

Cylinder cover plates for European profile cylinder.

Online data sheet



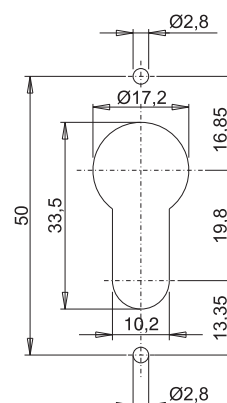
Technical Features

The cover plate is composed of a plate that is fixed to the profile by self-threading screws and a cover that is snap-fixed on the plate. The cover plate design matches that of its handle.

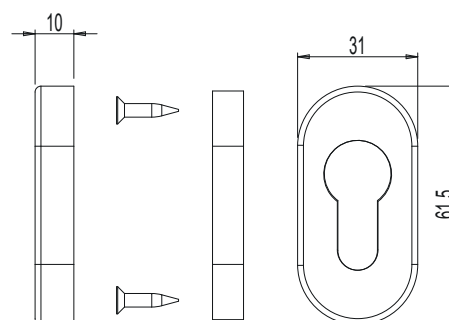
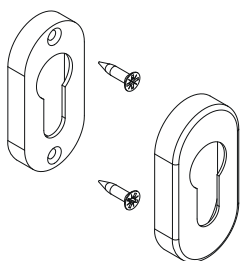
Materials

External cover plate made of aluminium or painted zamak
Polyamide cover plate sub-base
Zinc plated steel screws

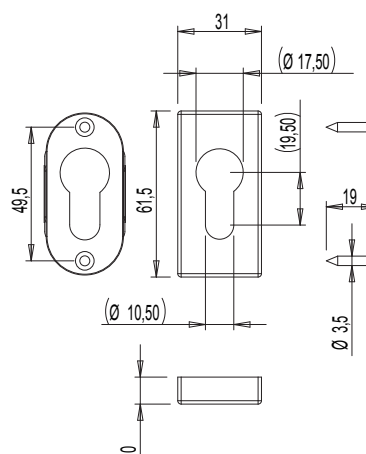
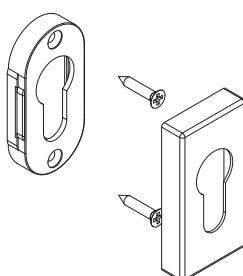
European cylinder machining



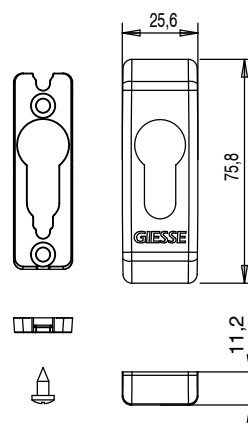
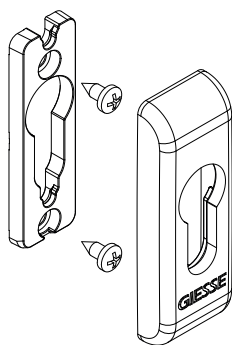
0243001



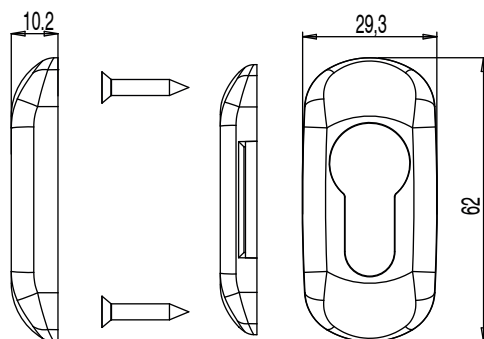
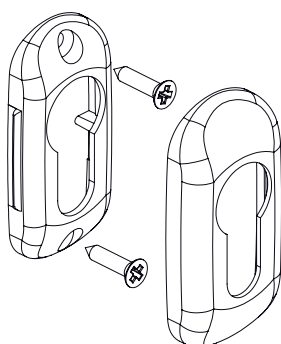
02431



04476N



07058N



Item code	Description	Note	Base Raw	Anodised Elox	Painted	Trend/Gold Brass	Pieces per pack
0243001	CYLINDER COVER PLATE	1 set= 1 cover + 1 cover plate	X		X	X	20
02431	ASIA CYLINDER COVER PLATE	1 set= 1 cover + 1 cover plate	X		X	X	20
04476N	CYLINDER COVER PLATE	1 set= 1 cover + 1 cover plate	X		X		20
07058N	OVAL ROSETTE FOR MACHINED CYL.	1 set= 2 covers + 2 cover plates	X		X	X	20