

G-TYPE PARALLEL ARMS



Functions

Reversible parallel arms allow the sash of a curtain wall or external opening to be opened in parallel.

Online data sheet



Technical Features

Parallel arms are packaged in pairs of a right-hand and a left-hand one. These arms enable opening the sash outwards, parallel to the frame. In general, the intended use of this arm is for an opening within a curtain wall. The added value of this type of opening is aesthetic, as the curtain wall no longer "breaks" light reflection but maintains uniformity between the surface of the opening and the fixed part. The particularly strong and durable arms are made of corrosion proof 304 stainless steel.

The products are suitable for application on profile series with a sash-frame distance of 21 mm.

It is possible to obtain a more accurate sash setting and to adjust the compression on the gaskets (± 1 mm) by turning the pins with hexagonal recess located on the arm.

The arms have 2 maximum opening positions (position A and B).

Position A) or B) is selected by fixing the stop plate inside the arm in one of the two holes.

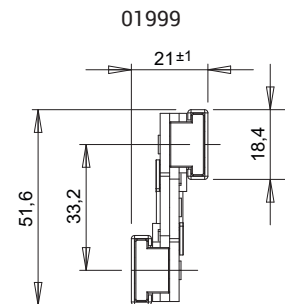
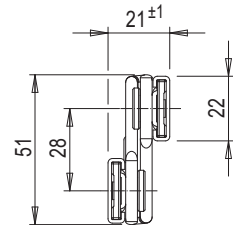
The maximum opening (A or B) selected on the arm can determine a different maximum load capacity (see table).

Depending on the size and weight of the sash, it is possible to combine single cross or double cross arms.

Materials

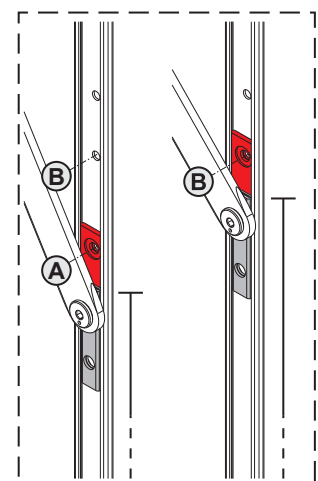
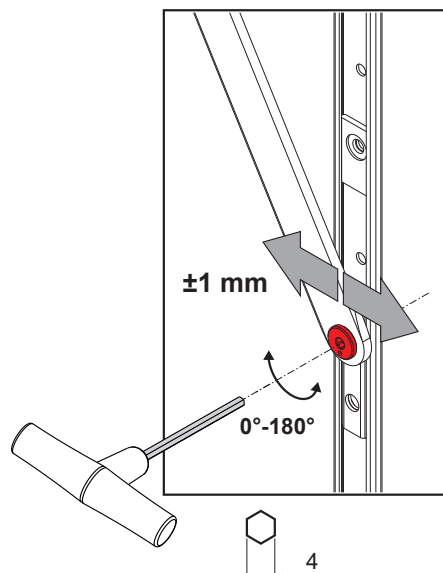
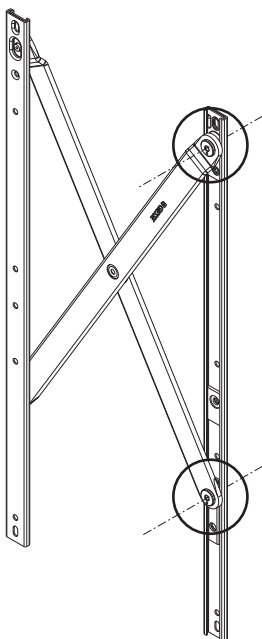
AISI 304 stainless steel arm

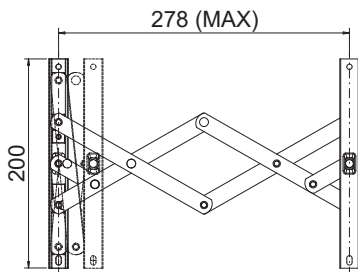
01969001 - 01976001
01977001 - 01978001 - 01979001



Compression adjustment

Opening adjustment

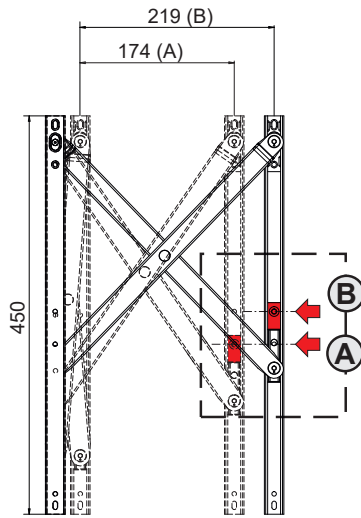




01999

SASH SIDE

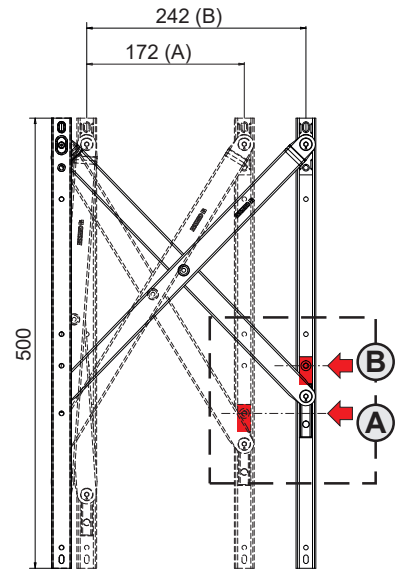
FRAME SIDE



01969001

SASH SIDE

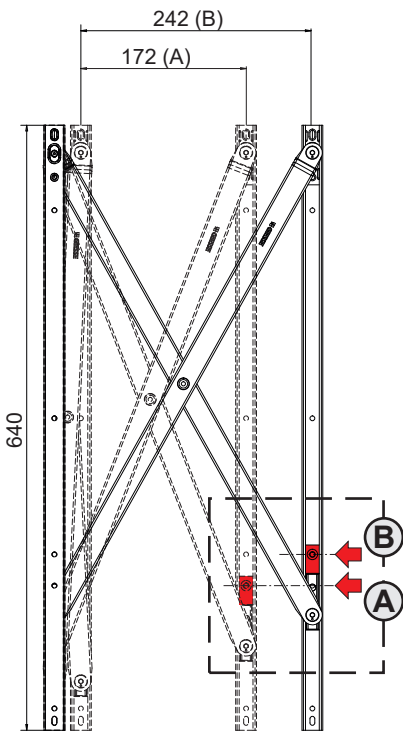
FRAME SIDE



01976001

SASH SIDE

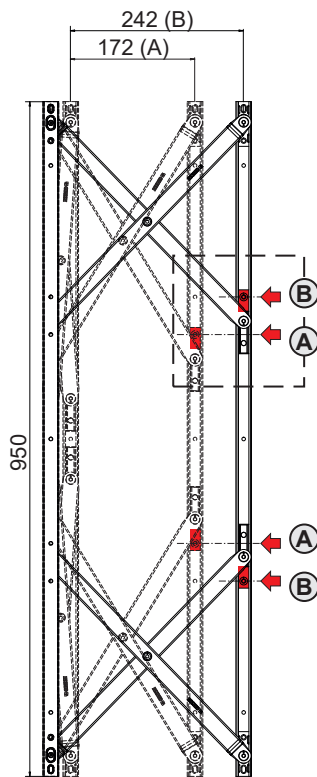
FRAME SIDE



01977001

SASH SIDE

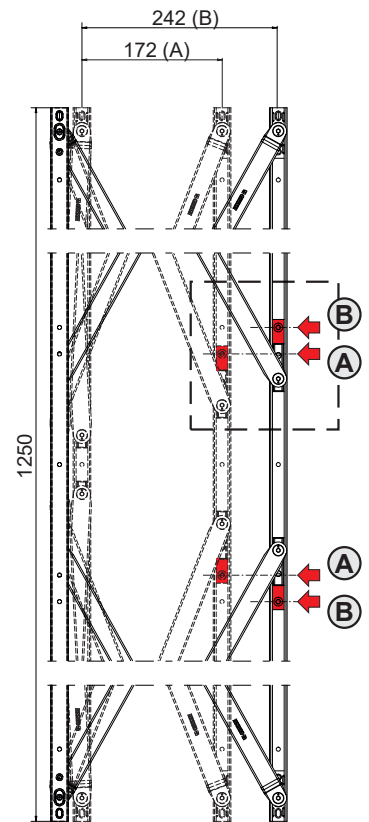
FRAME SIDE



01978001

SASH SIDE

FRAME SIDE

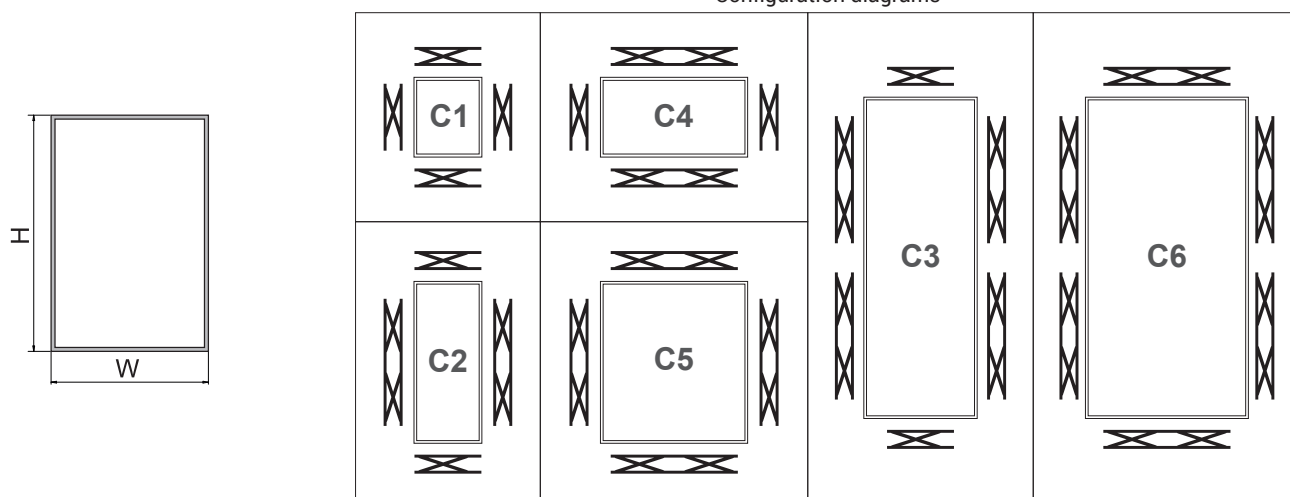


01979001

SASH SIDE

FRAME SIDE

Configuration diagrams



Configurations, dimensions and load capacities

Configura-tion	Description	Manufac-tured with	Min H	Max H	Min W	Max W	Max. weight (A) [kg]	Max. weight (B) [kg]	Manual Opening	Automatic Opening
C1	2 pair of single arms	01999 + 01969001	600	1000	300	600	55	55	yes	yes
C1	2 pair of single arms	01969001	600	1000	600	1000	55	55	yes	yes
C1	2 pair of single arms	01976001	650	1000	650	1000	55	55	yes	yes
C1	2 pair of single arms	01977001	800	1200	800	1200	75	75	yes	yes
C2	1 pair of single arms + 1 pair of double arms	01999 + 01978001	1100	1500	300	650	200	170	yes	yes
C2	1 pair of single arms + 1 pair of double arms	01976 + 01978001	1100	1500	650	1000	200	170	no	yes
C2	1 pair of single arms + 1 pair of double arms	01977001 + 01979001	1400	1800	800	1200	200	200	no	yes
C003	1 pair of single arms + 2 pairs of double arms	01999 + 01978001 (x2)	2200	3000	300	650	200	170	yes	yes
C003	1 pair of single arms + 2 pairs of double arms	01976001 + 01978001 (x2)	2200	3000	650	1000	200	170	no	yes
C003	1 pair of single arms + 2 pairs of double arms	01977001 + 01979001 (x2)	2800	3600	800	1200	200	200	no	yes
C4	1 pair of single arms + 1 pair of double arms	01976001 + 01978001	650	1000	1100	2000	55	55	yes	yes
C4	1 pair of single arms + 1 pair of double arms	01977001 + 01979001	800	1200	1400	2000	75	75	yes	yes
C5	2 pairs of double arms	01978001 (x2)	1100	1500	1100	1500	200	170	no	yes
C5	2 pairs of double arms	01979001 (x2)	1400	1800	1400	1800	200	200	no	yes
C6	3 pairs of double arms	01978001 (x3)	2200	3000	1100	1700	200	170	no	yes
C6	3 pairs of double arms	01979001 (x2) + 01978001	2800	3600	1100	1700	200	200	no	yes

Item code	Description	Type of opening	Bag width (mm)	Arm thickness (mm)	Arm length (mm)	Maximum Opening A (mm)	Maximum Opening B (mm)	Compression adjustment (mm)	Base Raw	Anodised Elox	Painted	Trend/Gold Brass	Pieces per pack
01999	SINGLE PARALLEL ARM 8"-TYPE G - CP	parallel	18,4	20,2 ±1	200	278	-	-	X				4
01969001	SINGLE PARALLEL ARM 18"-TYPE G - CP	parallel	22	21 ±1	450	174	219	±1	X				4
01976001	SINGLE PARALLEL ARM 20"-TYPE G - CP	parallel	22	21 ±1	500	172	242	±1	X				4
01977001	SINGLE PARALLEL ARM 25"-TYPE G - CP	parallel	22	21 ±1	640	172	242	±1	X				4
01978001	DOUBLE PARALLEL ARM 39"-TYPE G - CP	parallel	22	21 ±1	950	172	242	±1	X				4
01979001	DOUBLE PARALLEL ARM 50"-TYPE G - CP	parallel	22	21 ±1	1250	172	242	±1	X				4