

ARMS FOR CURTAIN WALL-TOP HUNG-SIDE HUNG WINDOWS

GS HD ARMS TYPE A



Functions

Two-handed self-balancing arms able to bear the weight of a top-hung or outward opening (side hung) window and hold it in the open position.

Online data sheet



Technical Features

Type-A GS HD arms are suitable for making medium – low size/weight top or side hung windows (see table).

Some models can be used on both these different outward opening casement types (see table).

Type-A GS HD arms can be frictioned by turning the grub screw on the slider.

They can be applied in combination with the I, L and Laser limitation arms; this is in order to limit the maximum opening of a Top Hung sash.

Type-A GS HD arms are tested by Giesse for up to life-time 30.000 cycles.

Applicability

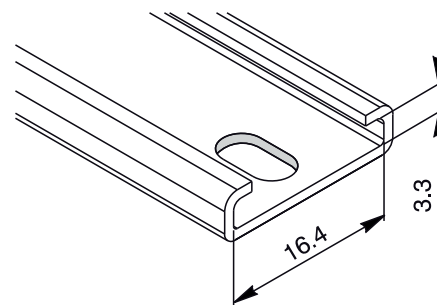
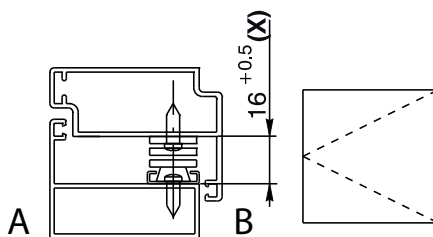
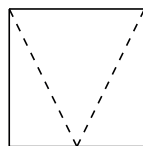
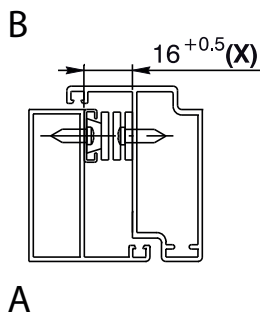
Type-A GS HD arms are applicable to sets of profiles with a stack (sash / frame distance) of 16 mm.

Materials

AISI 304 stainless steel

Top Hung (A: internal, B: external)

Side Hung (A: internal, B: external)



ARMS FOR CURTAIN WALL-TOP HUNG-SIDE HUNG WINDOWS

Item code	Description	Permitted type of opening	Bag width	Arm thickness (mm)	Arm length (mm)	TOP HUNG Maximum opening angle	TOP HUNG Maximum height (mm)	TOP HUNG Maximum width (mm)	TOP HUNG Maximum weight (kg)	SIDE HUNG Maximum height (mm)	SIDE HUNG Maximum width (mm)	SIDE HUNG Maximum weight (kg)	Base Raw	Items per pack
08127N	GS HD - 10" type A	Top -Side	18	15,5+0,5	261	84	400	1200	16	1200	550	14	X	6
08128N	GS HD - 12" type A	Top -Side	18	15,5+0,5	305	85	550	1200	18	1200	600	16	X	6
08129N	GS HD - 14" type A	Top -Side	18	15,5+0,5	351	87	650	1200	20	1200	600	18	X	6
08130N	GS HD - 16" type A	Top -Side	18	15,5+0,5	407	87	750	1200	21	1200	600	20	X	6
08131N	GS HD - 18" type A	Top -Side	18	15,5+0,5	457	87	850	1200	24	1200	650	22	X	6
08133N	GS HD - 22" type A	Top	18	15,5+0,5	563	40	1100	1200	-	-	-	-	X	6