

GS HD ARMS TYPE M



Functions

Pair of self-balancing arms (one right and one left) able to bear the weight of a top hung window or outward opening (side hung) window and hold it in the open position.

Online data sheet



Technical Features

Type-M GS HD arms are suitable for making medium – low size/weight top or side hung windows.

Some models can indeed be used on both these different outward opening casement types (see table).

Since the upper part of the arm is asymmetrical, within the pair of arms we will have a right and a left; this asymmetrical geometry of the arm improves the return and closing phases of the sash.

Type-M GS HD arms can be frictioned by turning the grub screw on the slider. If necessary, type-M GS HD arms can be applied in combination with the N-type limitation arms; this is in order to limit the maximum opening of a Top Hung sash.

Type-M GS HD arms are tested by Giesse for up to life-time 30.000 cycles.

Applicability

Type-M GS HD arms are applicable to sets of profiles with a stack (sash/frame distance) of 14 mm.

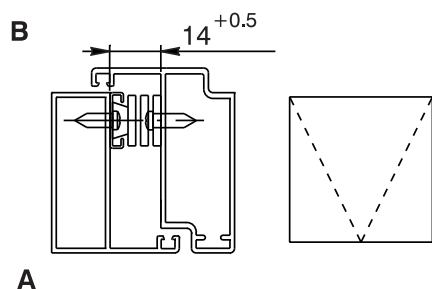


Ask to your sales rep for product availability.

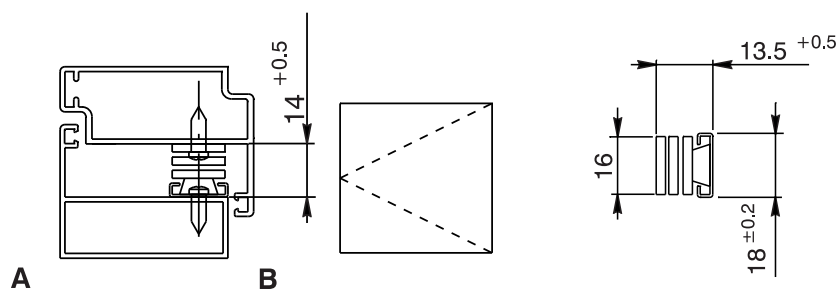
Materials

AISI 304 stainless steel arm
Slider in polyamide and brass

Top Hung (A: internal, B: external)



Side Hung (A: internal, B: external)



Item code	Description	Permitted type of opening	Bag width (mm)	Arm thickness (mm)	arm length (mm)	Maximum opening angle	Top Hung maximum height (mm)	Top Hung maximum width (mm)	Top Hung Maximum Weight (kg)	Side Hung maximum height (mm)	Side Hung maximum width (mm)	Side Hung Maximum Weight (kg)	Base Row	Items per pack
08195	GS HD - 12" type M	Top-Side	18	13,5+0,5	310	87	550	1200	20	1200	600	16	X	6
08196	GS HD - 14" type M	Top-Side	18	13,5+0,5	358	87	650	1200	22	1200	600	17	X	6
08197	GS HD - 16" type M	Top-Side	18	13,5+0,5	412	87	750	1200	24	1200	650	20	X	6
08198	GS HD - 18" type M	Top-Side	18	13,5+0,5	459	87	850	1200	26	1200	650	21	X	6
08201	GS HD - 8" type M	Top	18	13,5+0,5	214	70	350	1200	12				X	6
08202	GS HD - 10" type M	Top-Side	18	13,5+0,5	270	87	400	1200	16	1200	550	15	X	6