

DOMINA CLASSIC HINGE

Functions

Surface mounting hinge, 2 or 3 wing version for heavy doors made of aluminium.

Adjustable in three directions.

For combination with counterplate kit, with expansion dowels for single sealed unit profiles and with M12 direct fixing screw for thermal break profiles.

Online data sheet



Technical Features

Hinge suitable for doors subject to intensive use (use category 4* - heavy duty use) with high resistance to fatigue and wear (durability grade 7* - 200,000 test cycles).

Ideal for the assembly of doors characterized by large dimensions, heavy weight and intensive use.

Adjustments in three directions:

- micrometric side adjustment (± 2.5 mm) with door installed, obtainable by turning the adjustment screw located in the sash hinge cartridge
- micrometric vertical adjustment (0-4 mm) with door installed, obtainable by turning the grub screw located at the bottom of the frame part of the hinge, using the special adapter supplied with the product
- compression adjustment (± 0.5 mm), obtainable by turning the eccentric bush in the frame part of the hinge to the angular position required.

Screw-cover plates fixed to hinge using pull screws driven from the inside (for locking purposes use clip item 05051), removable only with the sash open (tamper-proof).

For combination with counterplate kit, with expansion dowels for single sealed unit profiles and with M12 direct fixing screws for thermal break profiles.

Profile can be prepared with $\varnothing 11$ mm holes (for all fixing systems) using drill templates item 03237 and item 05052

When applied to a non-flush profile, the hinge is fitted in combination with shim steps selected according to the type of fixing used for the profile:

- steps with centering bushes: for counterplate kit and expansion dowels for single sealed unit profile
- steps without centering bushes: for M12 direct fixing screws.

* Complies with EN 1935



Ask to your sales rep for product availability.

Materials

Extruded aluminium hinge bodies and screw-cover plates

Zamak pin cartridge with GS Silver Plus finish (up to 500 h corrosion resistance)

$\varnothing 11$ pin, stainless steel

Side adjustment screw made of treated steel ensuring high resistance to corrosion

Eccentric cartridge, cover ring and vertical set-screw, acetal resin

Screw concealer plate fixing screws, zinc-coated steel

Polyamide concealer caps

Capacities

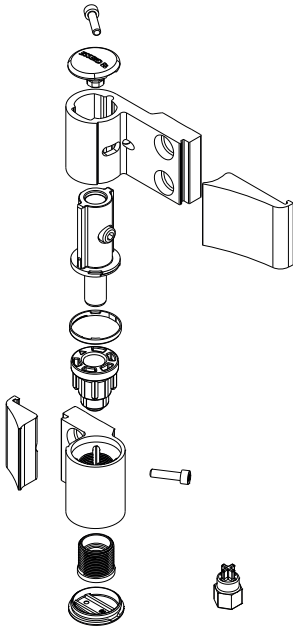
Up to 120 kg with two 2-wing hinges

Up to 140 kg with three 2-wing hinges

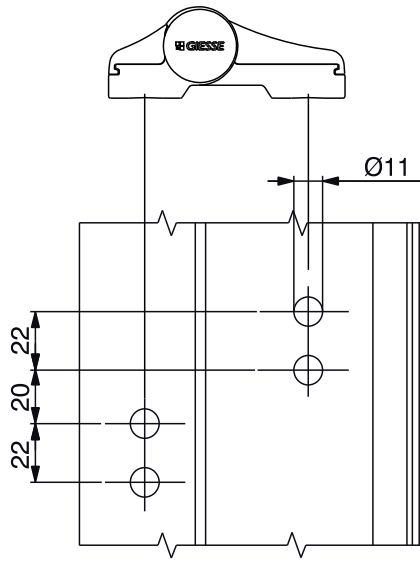
Up to 160 kg with two 3-wing hinges

Up to 180 kg with three 3-wing hinges

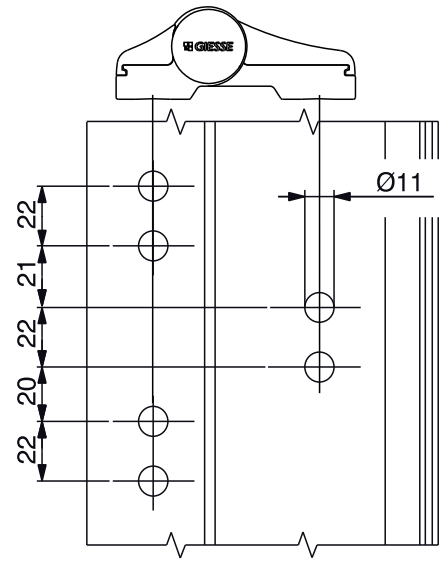
CE Mark in compliance EN1935



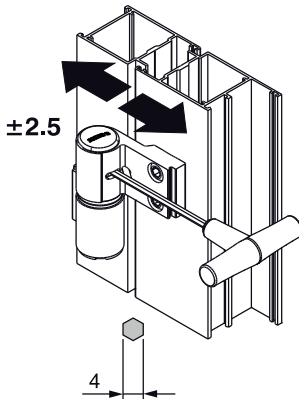
Machining on profile (2 wings)



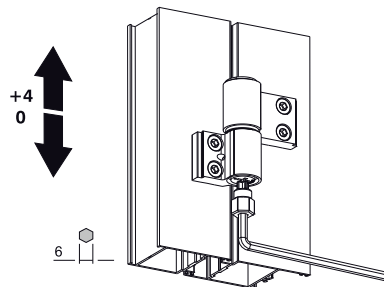
Machining on profile (3 wings)



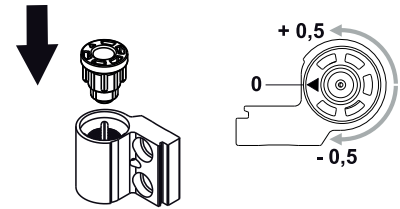
Side adjustment



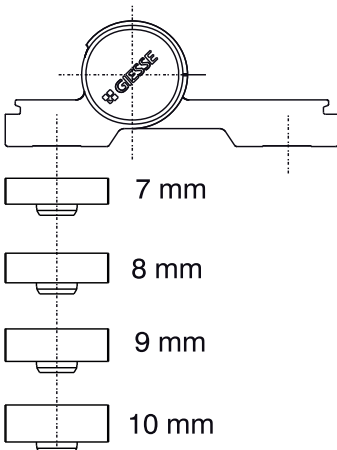
Height adjustment



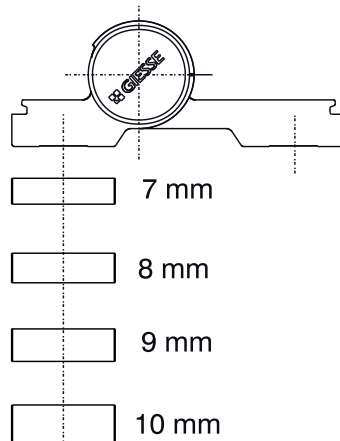
Compression adjustment



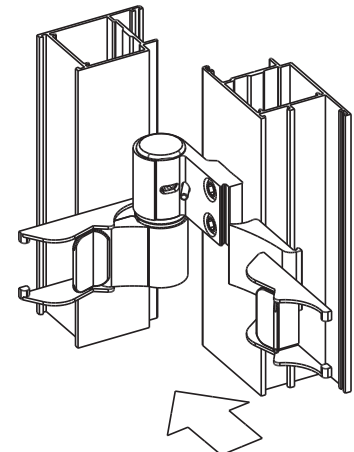
Steps with bushes

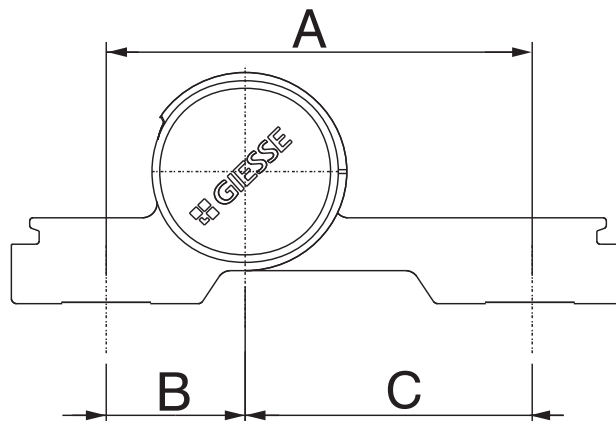


Steps without bushes



Use of locking clips





Item code	Description	Version	C/C distance A [mm]	B [mm]	C [mm]	Load capacity 2 hinges [kg]	Load capacity 3 hinges [kg]	CE marking	Base Raw	Anodised Elox	Painted	Trend/Gold Brass	Pieces per pack
06170	DOMINA CLASSIC	2 leaf	62,5	20,5	42	120	140	Class 13	X	X	X	X	10
06171	DOMINA CLASSIC	3 leaf	62,5	20,5	42	160	180	Class 14	X	X	X		10
06172	DOMINA CLASSIC	2 leaf	70,5	20,5	50	100	120	Class 12	X	X	X		10
06173	DOMINA CLASSIC	3 leaf	70,5	20,5	50	120	140	Class 13	X	X	X		10
06174	DOMINA CLASSIC	2 leaf	78	20,5	57,5	100	120	Class 12	X	X	X		10
06175	DOMINA CLASSIC	3 leaf	78	20,5	57,5	120	140	Class 13	X	X	X		10
06176	DOMINA CLASSIC	2 leaf	84	42	42	100	120	Class 12	X	X	X		10
06177	DOMINA CLASSIC	3 leaf	84	42	42	120	140	Class 13	X	X	X		10
06178	DOMINA CLASSIC	2 leaf	92	42	50	80	100	Class 11	X	X	X		10
06179	DOMINA CLASSIC	3 leaf	92	42	50	100	120	Class 12	X	X	X		10
06180	DOMINA CLASSIC	2 leaf	99,5	42	57,5	80	100	Class 11	X	X	X		10
06181	DOMINA CLASSIC	3 leaf	99,5	42	57,5	100	120	Class 12	X	X	X		10
06168	INDUSTRIAL DOMINA CLASSIC	2 leaf	62,5	20,5	42	120	140	Class 13	X	X	X		20
06169	INDUSTRIAL DOMINA CLASSIC	3 leaf	62,5	20,5	42	160	180	Class 14	X		X		20