

DOMINA HP HINGE

Functions

Surface mounting hinge, 2 or 3 wing version (Giese patent) for heavy doors made of aluminium.

Adjustable in three directions.

For combination with counterplate kit, with expansion dowels for single sealed unit profiles and with M12 direct fixing screw for thermal break profiles.

Online data sheet



Technical Features

Hinge suitable for doors subject to intensive use (use category 4* - heavy duty use) with high resistance to fatigue and wear (durability grade 7* - 200,000 test cycles). Ideal for the assembly of doors characterized by large dimensions, heavy weight and intensive use.

Adjustable in 3 directions with or without door installed:

- micrometric side adjustment (± 2.5 mm) with door installed, obtainable by turning the side adjustment screw located in the sash hinge cartridge. The locking grub screw on the sash hinge locks the side adjustment cartridge in the chosen position.

- compression micrometric adjustment (± 0.5 mm) obtainable by turning the bushing of the frame hinge (adjuster key art.05053). The locking grub screw, located on the frame hinge, locks the compression adjustment leaving access to the height adjustment.

- micrometric vertical adjustment (0/+4 mm), obtainable by turning the grub screw located at the bottom of the hinge. Insertion of the lower plug guarantees that the height adjustment is maintained.

The internal parts of the hinge are completely preassembled in two groups:

- pin cartridge for side adjustment
- cartridge with thrust bush for height and compression adjustments

Screw-cover plates fixed to hinge using pull screws driven from the inside, removable only with the sash open (tamper-proof).

For combination with counterplate kit, with expansion dowels for single sealed unit profiles and with M12 direct fixing screws for thermal break profiles.

Profile can be prepared with $\varnothing 11$ mm holes (for all fixing systems) using drill templates item 03237, item 05052 and item 03286 (for c/c distance 55.5).

When applied to a non-flush profile, the hinge is fitted in combination with shim steps selected according to the type of fixing used for the profile:

- steps with centering bushes: for counterplate kit and expansion dowels for single sealed unit profile

- steps without centering bushes: for M12 direct fixing screws.

* Complies with EN 1935

Materials

Extruded aluminium hinge bodies and screw-cover plates

Zamak pin cartridge and bush cartridge with GS Silver Plus finish (up to 500 h corrosion resistance)

$\varnothing 12$ pin, stainless steel

Side adjustment screw made of treated steel ensuring high resistance to corrosion

Thrust bush, acetal resin

Grub screws and vertical adjustment setscrew, stainless steel

Screw concealer plate fixing screws, zinc-coated steel

Polyamide concealer caps

Capacities

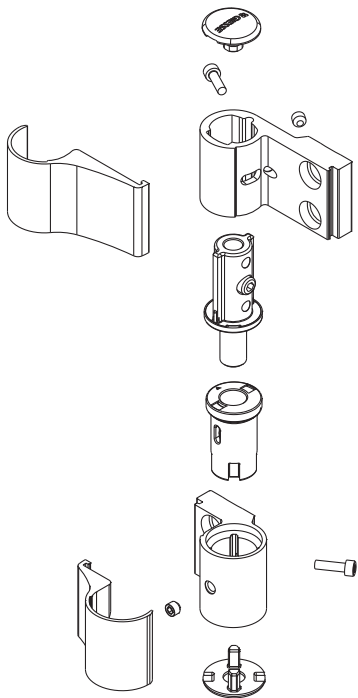
Up to 160 kg with two 2-wing hinges

Up to 180 kg with three 2-wing hinges

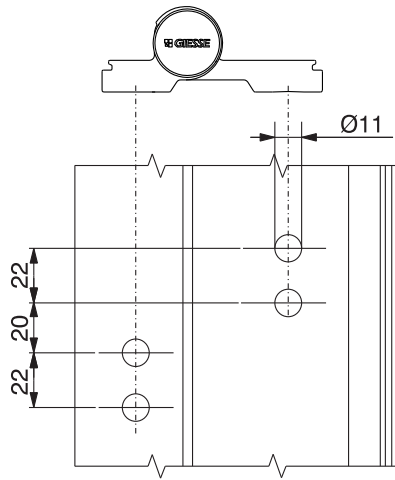
Up to 180 kg with two 3-wing hinges

Up to 200 kg with three 3-wing hinges

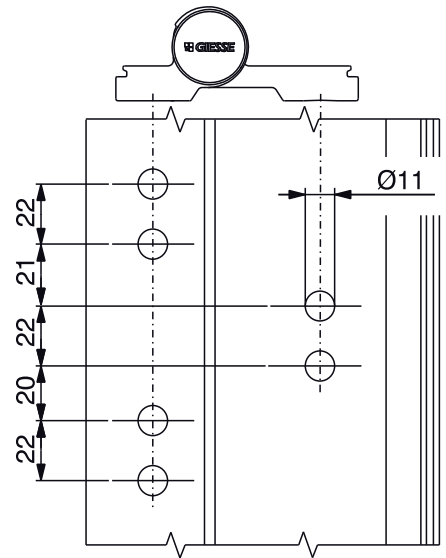
CE Mark in compliance EN1935



Preparation of profile for two-leaf hinge



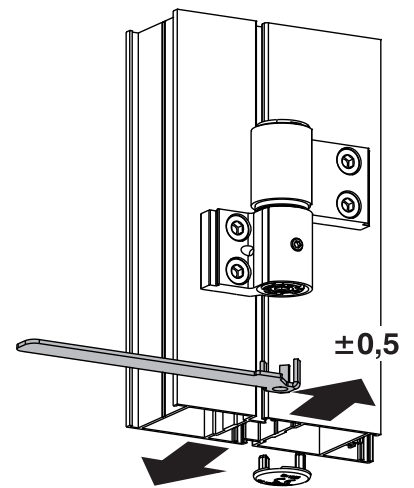
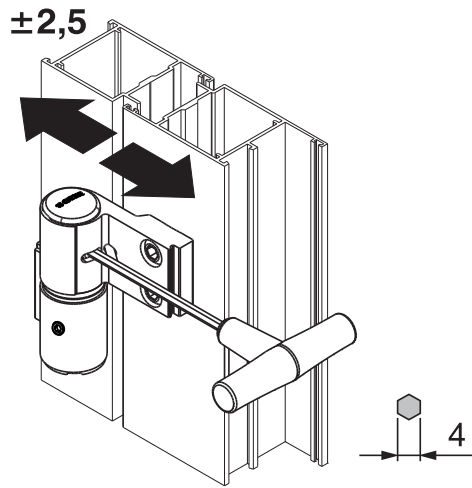
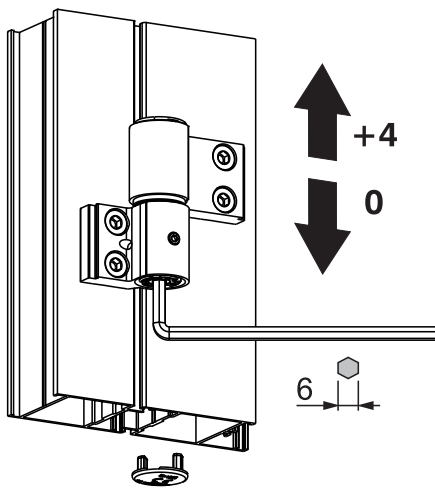
Machining on profile for three-wing hinge



Height adjustment

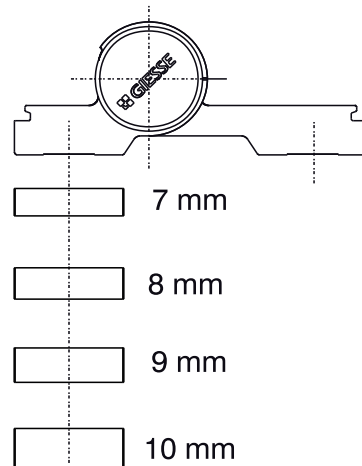
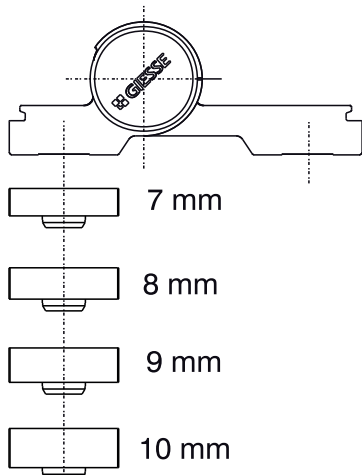
Side adjustment

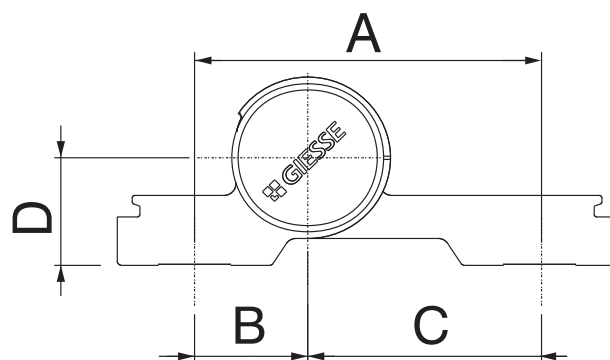
Compression adjustment



Steps with bushes

Steps without bushes





Item code	Description	Version	C/C distance A [mm]	B [mm]	C [mm]	Lift D [mm]	Load capacity 2 hinges [kg]	Load capacity 3 hinges [kg]	CE marking	Base Raw	Anodised Elox	Painted	Trend/Gold Brass	Pieces per pack
05158V	DOMINA HP	2 leaf	55,5	13,5	42		120	140	Class 12	X	X	X		10
05159V	DOMINA HP	2 leaf	55,5	13,5	42	28	120	140	Class 12	X	X	X		10
05160V	DOMINA HP	2 leaf	62,5	20,5	42		160	180	Class 14	X	X	X	X	10
05161V	DOMINA HP	3 leaf	62,5	20,5	42		180	200	Class 14	X	X	X	X	10
05162V	DOMINA HP	2 leaf	70,5	20,5	50		120	140	Class 13	X	X	X	X	10
05163V	DOMINA HP	3 leaf	70,5	20,5	50		140	160	Class 12		X	X	X	10
05164V	DOMINA HP	2 leaf	78	20,5	57,5		120	140	Class 13	X	X	X	X	10
05165V	DOMINA HP	3 leaf	78	20,5	57,5		140	160	Class 12		X	X	X	10
05166V	DOMINA HP	2 leaf	84	42	42		120	140	Class 13	X	X	X	X	10
05167V	DOMINA HP	3 leaf	84	42	42		140	160	Class 12	X	X	X	X	10
05168V	DOMINA HP	2 leaf	92	42	50		100	120	Class 12	X	X	X	X	10
05169V	DOMINA HP	3 leaf	92	42	50		120	140	Class 12		X	X	X	10
05170V	DOMINA HP	2 leaf	99,5	42	57,5		100	120	Class 12	X	X	X		10
05171V	DOMINA HP	3 leaf	99,5	42	57,5		120	140	Class 12	X	X	X		10
05172V	DOMINA HP	2 leaf	62,5	20,5	42	36	160	180	Class 13	X	X	X		10
05174V	DOMINA HP	2 leaf	62,5	20,5	42	27	160	180	Class 13	X	X	X		10
05175V	DOMINA HP	3 leaf	62,5	20,5	42	27	180	200	Class 14	X	X	X		10
05176V	DOMINA HP	2 leaf	62,5	20,5	42	28	160	180	Class 13	X	X	X		10
05178V	DOMINA HP	2 leaf	62,5	20,5	42	30	160	180	Class 13	X	X	X		10
05179V	DOMINA HP	3 leaf	62,5	20,5	42	30	180	200	Class 14	X	X	X		10