

FLASH XXL HINGES

**Functions**

Clamp door hinge for profile with channel, adjustable in two directions with door installed.
For combination with aluminium covers purchased separately from the hinge.

Online data sheet

**Technical Features**

Hinge suitable for doors subject to intensive use (use category 4* - heavy duty use).

Ideal for the assembly of doors characterized by large dimensions, heavy weight and intensive use.

The thrust bearing located between the two hinge bodies increases resistance of the hinge to fatigue and wear (durability grade 7* - 200,000 test cycles).

The frame hinge leaf is fixed to the profile with self-tapping screws passing through the hinge body, to increase the stability of the system.

Totally or partially removable pin, allowing assembly of sash to frame even in situations where space is markedly restricted.

Adjustments in two directions with door installed:

- side adjustment (± 1 mm), obtainable by turning the eccentric bush in the sash part of the hinge with special key item 03900.

- height adjustment (-2/+4 mm) obtainable by means of sash lift support block supplied with the hinge, to be positioned against the top hinge sash leaf

The hinge is to be coupled to the covers for the sash hinge and frame hinge (art. 00599), can be painted and coated, sold separately. Fitting the cover on completing installation avoids damaging the visible parts of the hinge during assembly, transport and installation.

Special preload plate supplied with the product, to be positioned against the sash part of the bottom hinge, guaranteeing correct alignment of sash and frame under high loading conditions.

The plate can also be purchased separately (item 00591) as a replacement for the standard plates supplied with the hinge, when assembling doors supplied with three hinges, including a centrally positioned third hinge.

* Complies with EN 1935

Materials

Extruded aluminium hinge bodies, anodized black
 $\varnothing 10$ pin, thrust bearing, screws and grub screw, all stainless steel

Eccentric bush, acetal resin

Extruded aluminium fixing plates

Extruded aluminium preload plate

Lift support block, diecast zamak

Height adjustment grub screw, zinc-coated steel

Polyamide cap

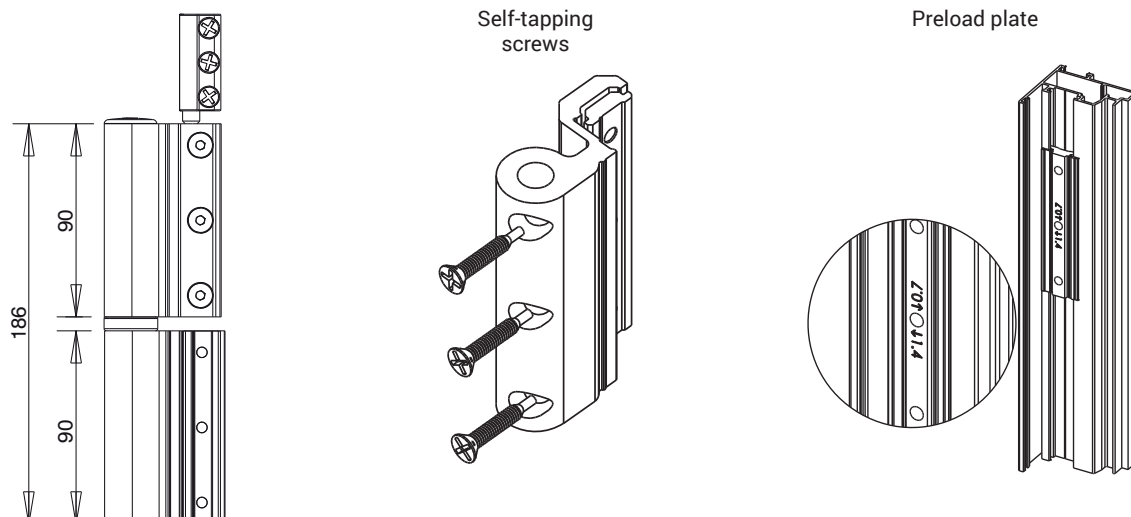
Extruded aluminium cover

Capacities

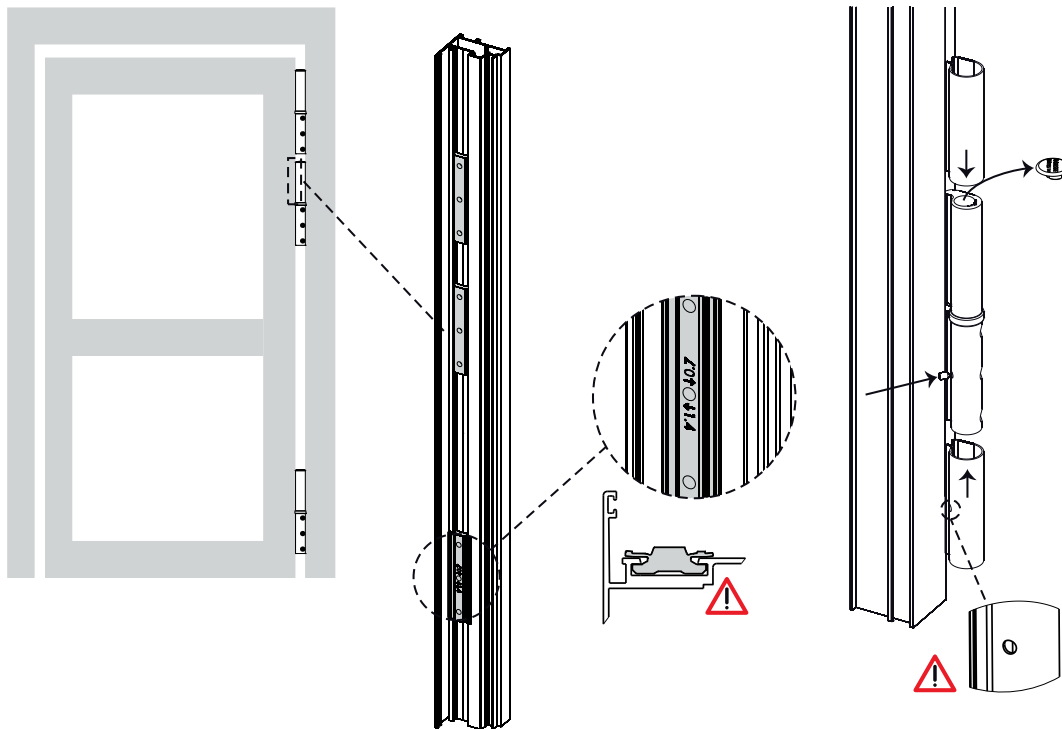
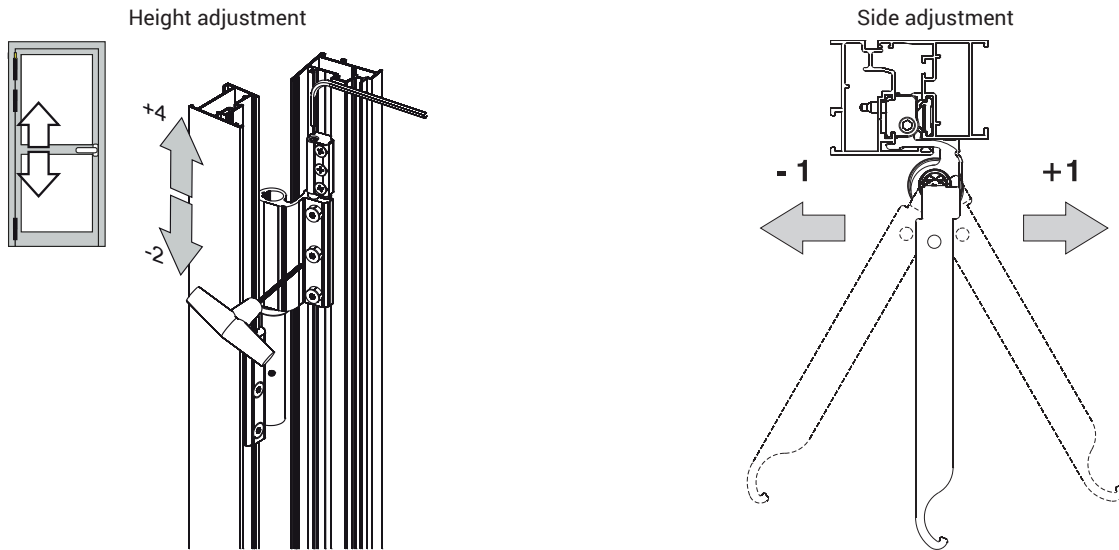
160 kg with 2 hinges

180 kg with 3 hinges

CE Mark in compliance EN1935



CLAMP DOOR HINGES



Item code	Description	PROFILE CROSS - SECTION	Step	Flush opening	Third sash	Load capacity 2 hinges [kg]	Load capacity 3 hinges [kg]	CE marking	Base Raw	Anodised Elox	Painted	Trend/Gold Brass	Pieces per pack
00561	FLASH XXL FIXING PLATES	C001	-	-	-	-	-	-	X				10
00591	FLASH XXL PRE-LOAD FIXING PLATES	C001-C002	-	-	-	-	-	-	X				10
00598N	FLASH XXL HINGE	C001	8 mm max	-	-	160	180	Class 14		X			20
00599	COVER, FLASH XXL HINGE	C001	-	-	-	-	-	-	X	X	X	X	20