

## EUROPEAN PROFILE DOUBLE CYLINDER



### Functions

Double cylinder with European profile

Online data sheet

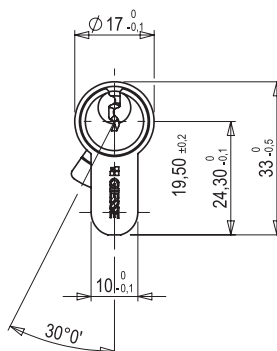
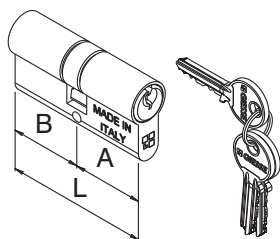


### Technical Features

Double cylinder with European profile with 5-pin coding system.  
Projecting DIN cam.  
Stack 0.5 mm.  
The product is supplied with a set of 3 keys in a ring and countersunk flat head fixing screw.

### Materials

Cylinder body in nickel-plated brass  
Nickel-plated brass cylinder  
DIN cam in sintered steel  
Pins and counter-pins in brass  
Springs in stainless steel  
Nickel-plated brass key  
Zinc plated steel fixing screw



Item code	Description	L [mm]	A [mm]	B [mm]	Base Raw	Anodised Elox	Painted	Trend/Gold Brass	Pieces per pack
04469N	Double cylinder with European profile 35/35	70	35	35	X				10
04470N	Double cylinder with European profile 40/40	80	40	40	X				10
04471N	Double cylinder with European profile 35/45	80	35	45	X				10
04472N	Double cylinder with European profile 35/55	90	35	55	X				10
04473N	Double cylinder with European profile 30/70	100	30	70	X				10
04474N	Double cylinder with European profile 40/60	100	40	60	X				10
04490N	Double cylinder with European profile 30/30	60	30	30	X				10
04491N	Double cylinder with European profile 30/40	70	30	40	X				10
04492N	Double cylinder with European profile 30/45	75	30	45	X				10
04493N	Double cylinder with European profile 35/40	75	35	40	X				10
04494N	Double cylinder with European profile 30/50	80	30	50	X				10
04495N	Double cylinder with European profile 40/50	90	40	50	X				10
04652N	Double cylinder with European profile 30/55	85	30	55	X				10
04653N	Double cylinder with European profile 30/60	90	30	60	X				10
04654N	Double cylinder with European profile 30/65	95	30	65	X				10
05988	Cilindro doble de perfil europeo 30/75	105	30	75	X				10
05999	Double cylinder with European profile 96/48	96	48	48	X				10
07675	Double cylinder with European profile 27/27	54	27	27	X				10
07680	Double cylinder with European profile 31/31	62	31	31	X				10
07681	Double cylinder with European profile 27/37	64	27	37	X				10
07682	Double cylinder with European profile 35/35	70	35	35	X				10
07683	Double cylinder with European profile 31/41	72	31	41	X				10
07684	Double cylinder with European profile 41/41	82	41	41	X				10
07685	Double cylinder with European profile 31/51	82	31	51	X				10
07687	Double cylinder with European profile 31/61	92	31	61	X				10
07688	Double cylinder with European profile 51/41	92	51	41	X				10
07689	Double cylinder with European profile 31/91	122	31	91	X				10
07697	Double cylinder with European profile 55/55	110	55	55	X				10
07698	Double cylinder with European profile 37/37	74	37	37	X				10
07699	Double cylinder with European profile 37/47	84	37	47	X				10