

FRONT-MOUNTED COUNTERPLATES



Functions

The front application counterplate combined with a nib for a recessed handle creates the fastener of a sliding sash.

Online data sheet



Technical Features

The front-mounting counterplates are fitted with the frame already assembled, on the frame upright usually with self-tapping screws.

This type of counterplate has the advantage of being able to be height adjusted thanks to the slots for accommodating screws, by simply loosening them and then repositioning the counterplate.

Available in different versions depending on the profile on which they are to be mounted.

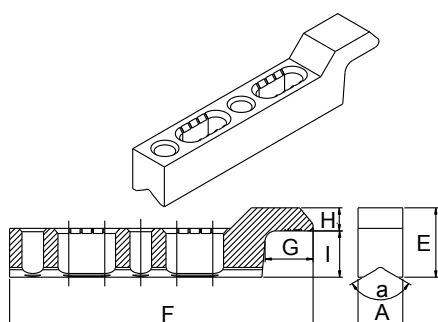
For Type 1 counterplates there is also a cosmetic cover and an 8 mm shim.

Materials

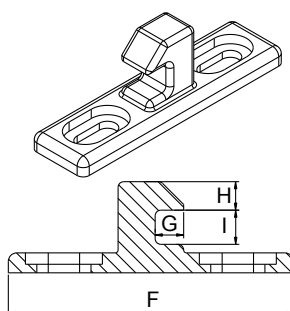
Zamak body (GS Silver Plus/GS500)

Stainless steel fixing screws

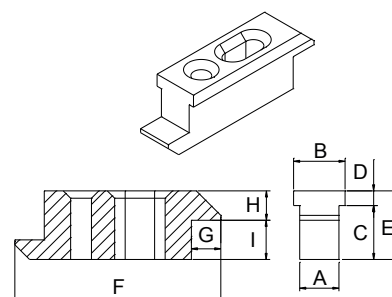
Type 1



Type 2



Type 3



Item code	Description	Type	Shims	A	B	C	D	E	F	G	H	I	a°	Compatible with Brio Small nib	Compatible with Brio Big nib	Compatible with Brio Zamak nib	Base Raw	Anodised Elox	Painted	Trend/Gold Brass	Pieces per pack
02616	COVER FOR COUNTERPLATE TYPE 1	-	-	-	-	-	-	-	-	-	-	-	-	-	-	-	X				200
03337	FRONT-MOUNTED COUNTERPLATE	1	no	8,7	-	-	-	13,5	59	9,3	4,5	9	120°	YES	YES	YES	X				100
03338	FRONT-MOUNTED COUNTERPLATE	1	no	8,7	-	-	-	13,5	59	9,3	4,5	9	120°	YES	YES	YES	X				100
03389	FRONT-MOUNTED COUNTERPLATE	1	≤ 12.5 mm	8,7	-	-	-	13,5	59	9,3	-	-	120°	YES	YES	YES	X				20
9002901	FRONT-MOUNTED COUNTERPLATE	2	no	13	7,5	12,5	3,5	16	50	5	4	7	-	YES	NO	NO	X				100
90032	FRONT-MOUNTED COUNTERPLATE	3	no	6,8	8,8	2	12	14	42	6	6	8	-	YES	NO	NO	X				100
9003401	FRONT-MOUNTED COUNTERPLATE	3	no	8	10,5	3	11	14	42	6	6	8	-	YES	NO	NO	X				100
9003801	FRONT-MOUNTED COUNTERPLATE	1	no	10	-	-	-	14	43	5	6	8	120°	YES	NO	NO	X				100
9004201	FRONT-MOUNTED COUNTERPLATE	1	no	8,2	-	-	-	18,5	42	6	6	12,5	150°	YES	YES	YES	X				100
90047	FRONT-MOUNTED COUNTERPLATE	1	no	12,1	9,4	11,7	2,3	14	59	9,3	4,5	9,5	-	YES	YES	YES	X				100
90085	FRONT-MOUNTED COUNTERPLATE	1	no	8	6,2	11	3,5	14,5	37	5,1	4,5	10	-	YES	YES	YES	X				100