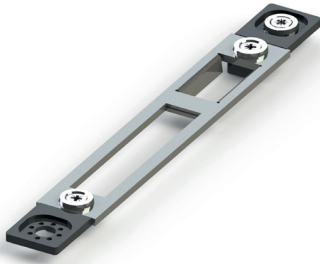


COUNTERPLATES FOR LOCKS AP200



Functions

Counterplates to be combined with the central locks AP200 multi-point locks for emergency exits to be combined with the system.

Online data sheet



Technical Features

TYPE 1

Counterplate and set of adjustable counterplates for door profiles without a channel, to be combined with the single and multi-point locks for emergency AP200.

Front fixing with self-threading screws. Equipped with shims to adjust the stack.

Side adjustment ± 2 mm with the two blocks ready-assembled to the counterplate.

Materials

Front plates, screws for fixing to the profile and nuts made of stainless steel
Central plate body in zamak

TYPE 2

Counterplate and set of adjustable flat counterplates for door profiles without a channel, to be combined with the single and multi-point locks for emergency AP200.

Front fixing with self-tapping screws.

Side adjustment ± 1.5 mm with slots.

Materials

Counterplates and screws for fixing to the profile made of stainless steel

TYPE 3

Counterplate and set of adjustable counterplates for European Groove type profiles, to be combined with the single and multi-point locks for emergency AP200.

Front fixing in a channel by way of machined fixing plates, to lock in different positions to obtain adaptability to the various series of profiles.

Side adjustment ± 2 mm with slots.

Materials

Front plates, screws for fixing to the profile and nuts made of stainless steel
Adapters for side adjustment and machined fixing plates made of zamak

TYPE 4

Counterplate and set of adjustable counterplates for R40/R50 type profiles, to be combined with the single and multi-point locks for emergency AP200.

Front fixing in a channel by way of machined fixing plates, to lock in different positions to obtain adaptability to the various series of profiles.

Side adjustment ± 2 mm with slots.

Materials

Front plates, screws for fixing to the profile and nuts made of stainless steel
Adapters for side adjustment and machined fixing plates made of zamak

TYPE 5

Counterplate and set of adjustable counterplates for profiles with a channel with a stack of 30 mm, to be combined with the single and multi-point locks for emergency AP200.

Front fixing in a channel by way of machined fixing plates, to lock in different positions to obtain adaptability to the various series of profiles.

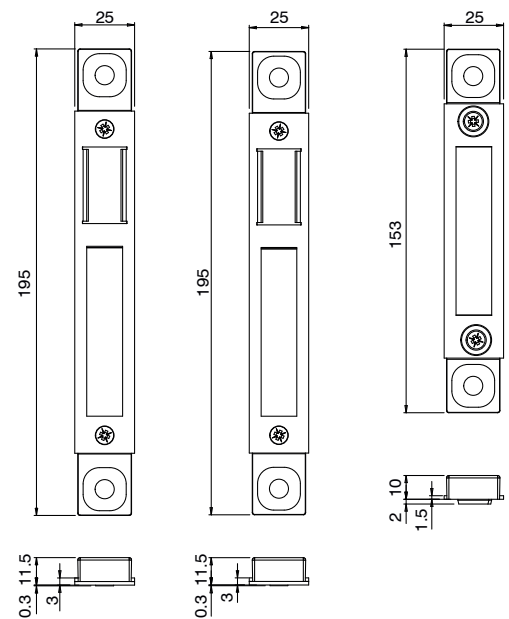
Side adjustment ± 2 mm with slots

Materials

Front plates, screws for fixing to the profile and nuts made of stainless steel
Adapters for side adjustment and machined fixing plates made of zamak

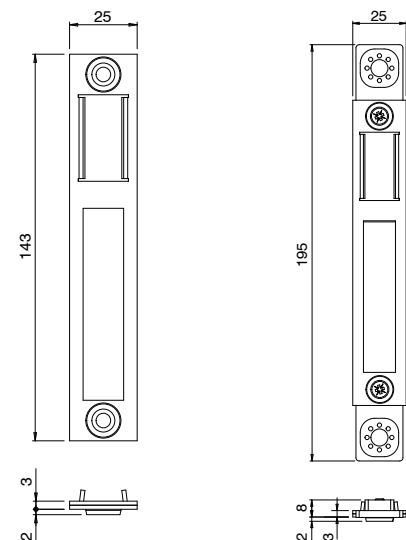
Type 1 – art. 07691

Type 1 – art. 07701

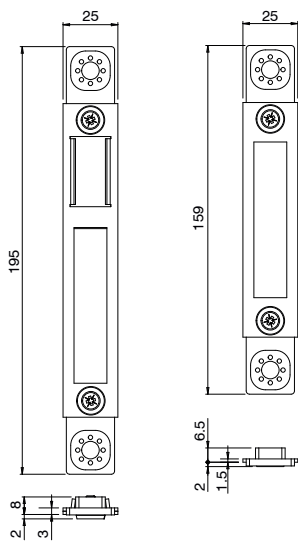


Type 2 – art. 07695

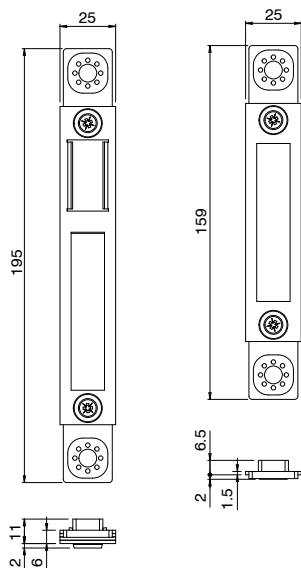
Type 3 – art. 07690



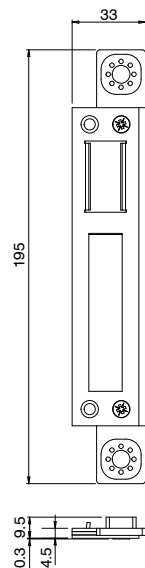
Type 3 – art. 07700



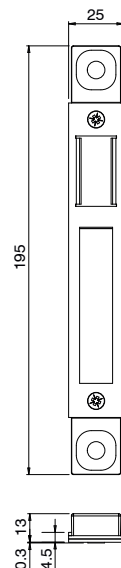
Type 3 – art. 07702



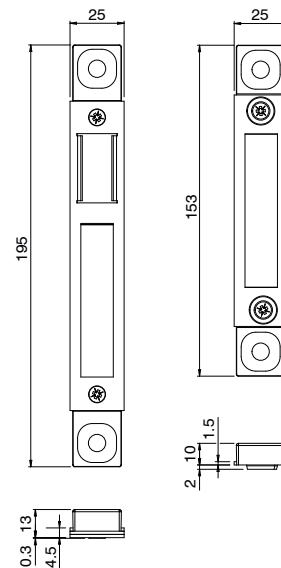
Type 4 – art. 07693



Type 5 – art. 07694



Type 5 – art. 07704



Item code	Description	Adjustment	Width [mm]	PROFILE CROSS - SECTION	Locks compatible with AP200	Base Raw	Anodised Elox	Painted	Trend/Gold Brass	Pieces per pack
07690	COUNTERPLATE FOR EUROPEAN GROOVE PROFILES	± 2 mm	25	C001-C002-C003-C004-C005-C006-C011-C012-C013-C014-C015-C016-C017	07644 - 07645 - 07662 - 07663	X				1
07691	COUNTERPLATE FOR DOOR PROFILES	± 2 mm	25	-	07641 - 07642 - 07644 - 07645 - 07660 - 07661 - 07662 - 07663	X				1
07693	COUNTERPLATE FOR PROFILE R40/R50	± 2 mm	33	C007-C008	07644 - 07645 - 07662 - 07663	X				1
07694	COUNTERPLATE FOR PROFILES GROOVE 15/20 STACK >15	± 2 mm	25	-	07641 - 07642 - 07644 - 07645 - 07660 - 07661 - 07662 - 07663	X				1
07695	UNIVERSAL FLAT COUNTERPLATE	± 1.5 mm	25	-	07641 - 07642 - 07644 - 07645 - 07660 - 07661 - 07662 - 07663	X				1
07700	COUNTERPLATE KIT FOR EUROPEAN GROOVE PROFILES	± 2 mm	25	C001-C002-C003-C004-C005-C006-C011-C012-C013-C014-C015-C016-C017	07654 - 07655	X				1
07701	COUNTERPLATE KIT FOR DOOR PROFILES	± 2 mm	25	-	07651 - 07652 - 07654 - 07655 - 07664 - 07665 - 07666 - 07667	X				1
07702	COUNTERPLATE KIT FOR PROFILES GROOVE 15/20 STACK 12/15	± 2 mm	25	C009-C010	07654 - 07655 - 07666 - 07667	X				1
07704	COUNTERPLATE KIT FOR PROFILES GROOVE 15/20 STACK >15	± 2 mm	25	-	07651 - 07652 - 07654 - 07655 - 07664 - 07665 - 07666 - 07667	X				1