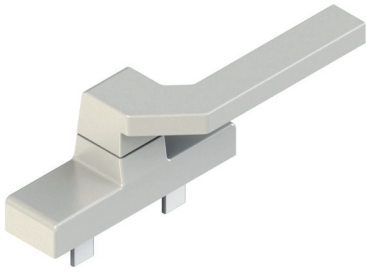


# KORA CW CREMONE



## Functions

Cremone for curtain walls with 90° (two-way) and opening/closing positioning notch.

Online data sheet



## Technical Features

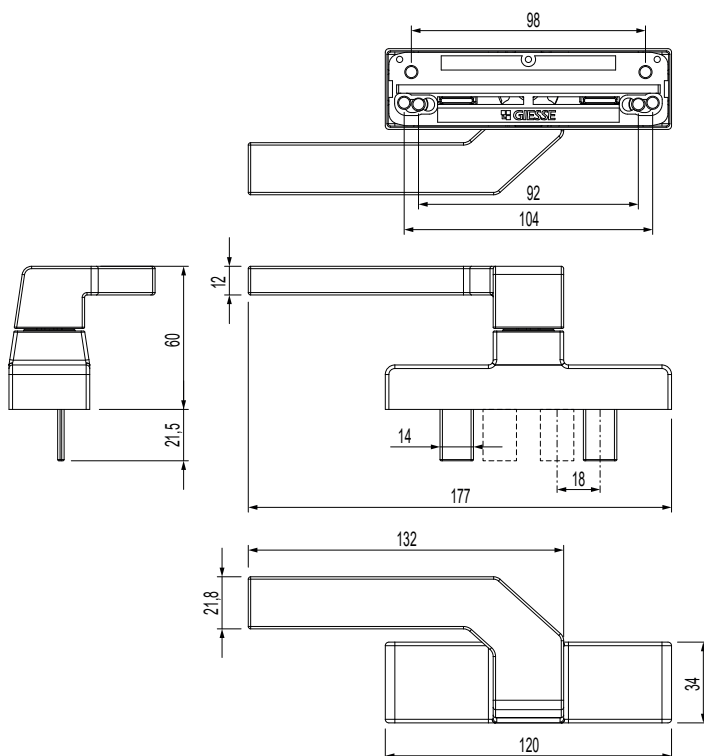
The use of high quality die-cast materials and the GIESSE painting system guarantee excellent mechanical performance, together with colour uniformity and good abrasion resistance.

KORA CW cremones are designed for installation with C/C distance of 104 mm and 92 mm, but can easily be adapted for fixing with a C/C distance of 98 mm. The special form of the pull handle makes it easy to insert the hand, thus allowing the handling of large-size sashes.

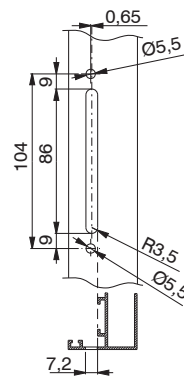
## Materials

Handle in die-cast aluminium  
Cremone case, gear, racks and sliding parts in die-cast zamak.

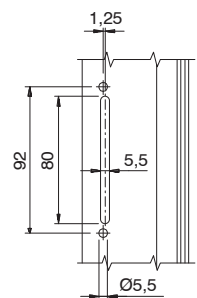
Offset block and plate in die-cast zamak  
Hostaform internal sheathing  
Spring, screw and fixing plate in stainless steel



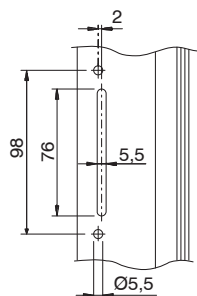
C/C distance machining 104 mm



C/C distance machining 92 mm



C/C distance machining 98 mm



Item code	Description	Version	Hand	C/C distances	Operation	Pull handle 0°	Pull handle 90°	Base Raw	Anodised Elox	Painted	Trend/Gold Brass	Pieces per pack
009691	KORA CW CREMONE		RX	104 - 92 - 98	two-way	closed	open	X		X		10