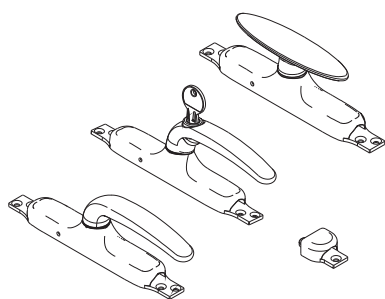


PROVENCE CREMONE



Functions

Lever Cremone, reversible, with closing rods in view, for front mounting for windows and shutters

Online data sheet



Technical Features

Front fixing with self-tapping screws.

All the fixing screws are concealed to enhance the design of the cremone and of the entire fastening mechanism.

The necessary machining consists of just holes with a single drill bit (Ø2.7mm in the case of aluminium). We recommend using the dedicated template.

Provence has a stroke of 18 mm, which allows an effective grip in the wall or in its strikers. The cremone package includes two rod guides and two pins for connection with the locking rods.

Materials

Handle in die-cast aluminium

Cremone case, gear, racks and rod guide in die-cast zamak

Trip spring, screws and grub screw, pre-assembled, in stainless steel

Liners in white polyamide

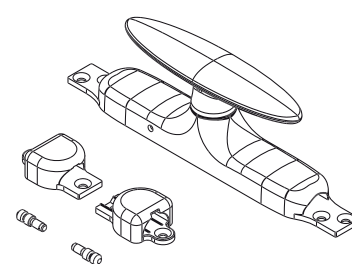
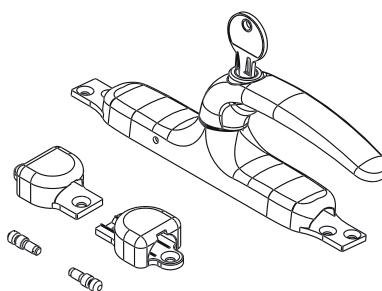
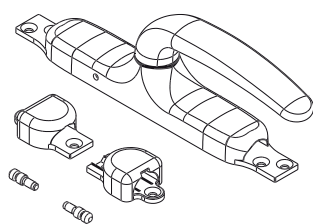
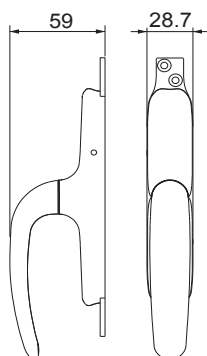
Extruded aluminium rod connecting blocks

Rod connection terminal and fixing screws in zinc plated steel

Lever pull handle Provence Cremone

Provence Cremone, lever pull handle with key

"T" pull handle Provence Cremone



Item code	Description	Version	Pull handle	Base Raw	Anodised Elox	Painted	Trend/Gold Brass	Pieces per pack
01160	LEVER PULL HANDLE PROVENCE CREMONE		Unica	X		X		10
01161	PROVENCE CREMONE, LEVER/KEY PULL HANDLE	Key	Unica	X		X		10
01162	T PULL HANDLE PROVENCE CREMONE		T	X		X		10