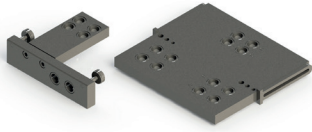


## HINGE MACHINING TEMPLATES

### Functions

Profile machining templates for assembly of DOMINA HP, DOMINA HP COVER and DOMINA CLASSIC hinges, in 2 and 3 leaf versions and with the various c/c distances.

Online data sheet



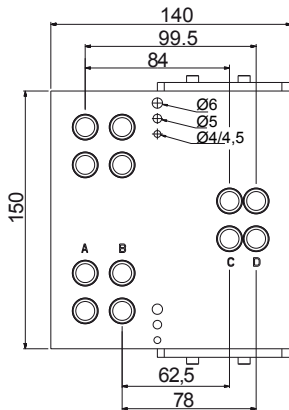
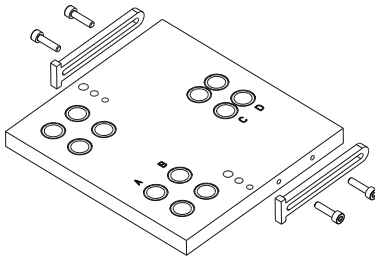
### Technical Features

Templates are provided with dowel pins of different diameters, to facilitate positioning on flush profiles, and with adjustable positioning aids for application to non-flush profiles.

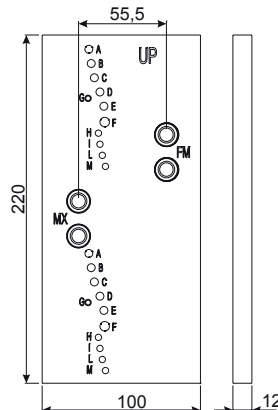
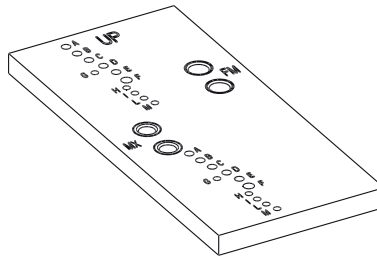
### Materials

Aluminium template  
Carbon nitrided steel guide bushes (preassembled)  
Dowel pins, positioners and fixing screws, all zinc-coated steel

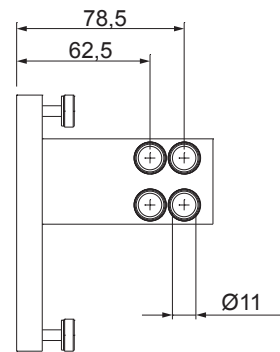
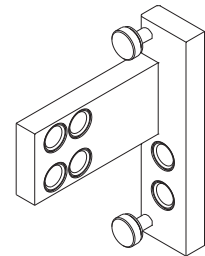
Machining template code 03237



Machining template code 03286



Machining template code 05050



Item code	Description	C/C distance [mm]	Parts	Base Raw	Anodised Elox	Painted	Trend/Gold Brass	Pieces per pack
03237	MACHINING TEMPLATE FOR DOMINA HINGES	62,5 78 84 99,5	adjustable positioners no.2 dual diameter pins Ø4-Ø4.5 no.2 pins Ø5 no.2 pins Ø6	X				1
03286	MACHINING TEMPLATE FOR DOMINA HINGES	55,5	no.2 dual diameter pins Ø4-Ø4.5 no.2 pins Ø5 no.2 pins Ø6	X				1
05052	MACHINING TEMPLATE FOR DOMINA HINGES	70.5 92	adjustable positioners no.2 dual diameter pins Ø4-Ø4.5 no.2 pins Ø5 no.2 pins Ø6	X				1