

TOP HUNG ARMS ADJUSTMENT DEVICES



Functions

Pair of height adjustment devices which, if applied to correctly prepared GS HD arms make it possible to adjust a top hung window in height.

Online data sheet



Technical Features

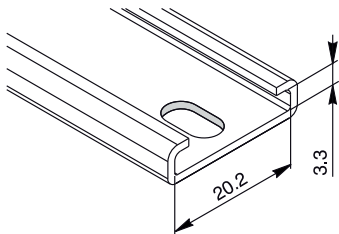
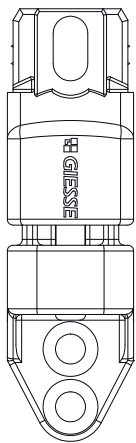
the height-adjustment device has an adjustment range of +/- 2 mm.
Art. 02006K is compatible with the GS HD type P range of arms.

Materials

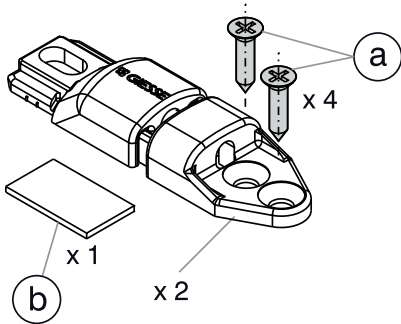
Silver Plus GS Zamak housing
Stainless steel adjustment and fixing screws

Code 02006

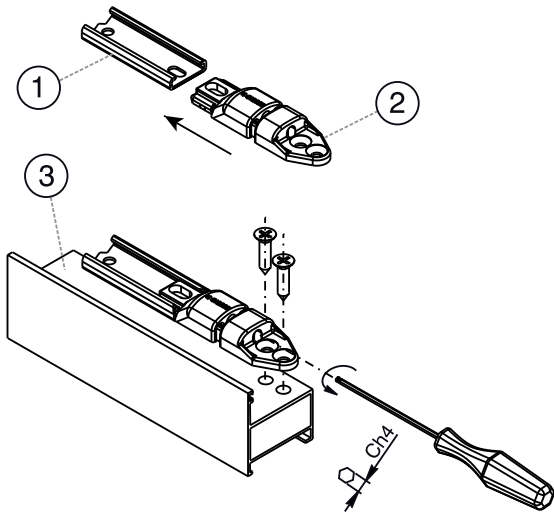
Dimensions, art. 02006



(a) self-tapping countersunk screws 4.8 mm, (b) shim for positioning arm.



1: Top Hung arm; 2: height adjustment component; 3: frame



Item code	Description	Applicable on	Base Raw	Anodised Elox	Painted	Trend/Gold Brass	Pieces per pack
02006K	Arm height adjustment element GS HD - CP (22/23)	GS HD arms Type P	X				12