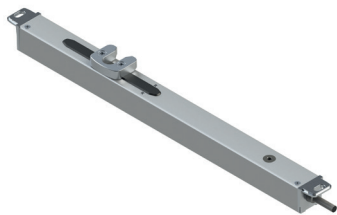


SLIM LOCK - 24 V

**Functions**

Electric locking device for the multiple locking of bottom-hung and top-hung windows, for combination with VARIA SLIM (syncro and solo) chain actuators operating at 24 V DC.

Technical Features

The SLIM LOCK – 24 V locking device can be combined with the following VARIA SLIM chain actuators:

- Varia Slim Plus RWA 24 V DC (Solo and Syncro)
- Varia Slim 24 V DC (Solo and Syncro)
- Varia Slim Small 24 V DC

(N.B.: this article cannot be combined with the Varia Slim Base 24 V DC actuator).

When the opening signal is received, the lock releases the locking points before the actuator comes into operation, and it locks the locking points as soon as the window has closed again.

The provision of locking points around the entire perimeter of the window significantly improves its tightness against air, water and wind.

Tube Lock is compact in size (25 x 26 mm) and is mounted set into the window frame, with no visual impact.

The bracket direction can be rotated if necessary.

The thrust and pull force (600 N working – 850 N starting) ensures exceptionally reliable operation, even with a large number of locking points.

Stroke selection (18 or 36 mm) using DIP switch.

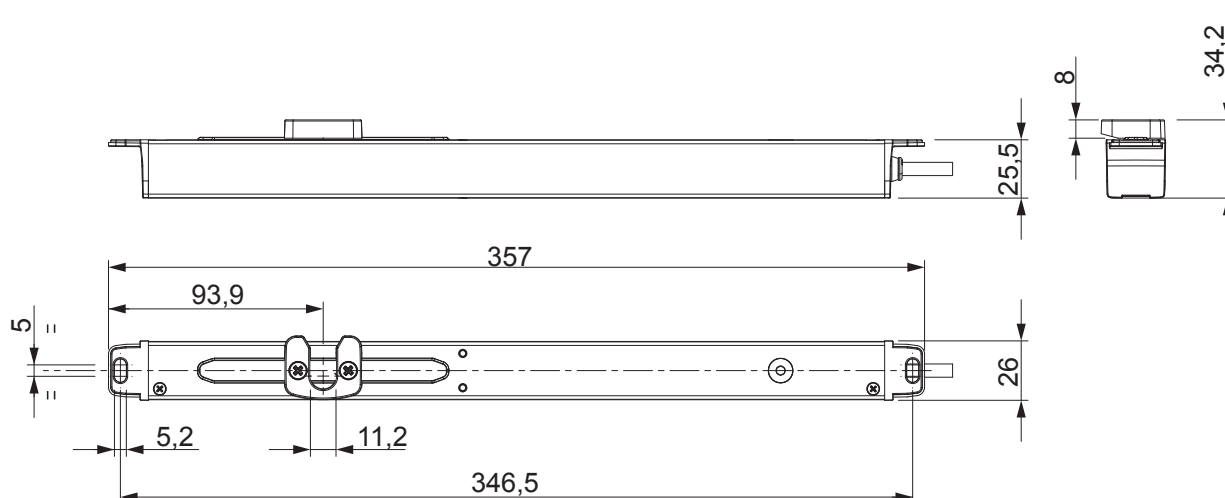
Produced in compliance with Directive 2004/108 EC (EMC) and 2014/35/EU (low voltage) and tested at 10,000 cycles with full load.

Power supply voltage: 24 V DC.

Materials

Extruded aluminium body.

Fixing brackets in die-cast zamak



CHAIN ACTUATORS

Technical data

Model	SLIM-LOCK 24V
Item code	07895
Thrust and pull force	600 N – 850 N peak
Strokes	18 mm / 36 mm
Power supply voltage	24V $\bar{\square}$ (20,4÷30V $\bar{\square}$)
Nominal load current input	0.85 A during stroke 1.2 A overload cutout rating
Nominal load absorbed power	~ 20 W
Idle stroke speed	5 mm/s
Duration of idle stroke	4 s (18 mm) – 7,2 s (36 mm)
Double electrical insulation	Device at safety extra-low voltage (SELV)
Duty rate	0,3
Service	S2 1 minute
Structure material	Extruded aluminium alloy
Operating temperature	-20°C ÷ +70°C
Electrical devices protection rating	IP 40
Opening and closing limit stop position	Electronically preset
Operation with chain actuator	Selectable
Operation without actuator	Selectable
Power cable with silicone insulation	3x0,5 mm ² - 2,00 m
Open/Close stroke overload protection	Overload cutout
Dimensions (mm)	25,5x25,5x 357
Weight (kg)	0,56

Item code	Description	Note	Base Raw	Anodised Elox	Painted	Trend/Gold Brass	Pieces per pack
07895	SLIM LOCK - 24 V		X				1