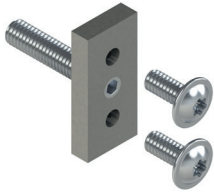


**CHIC DOOR REINFORCEMENT KIT**



**Functions**

Reinforcement kit for fixing the CHIC Door 160 hinge when used on profiles with a thickness less than 1.8 mm.

Online data sheet

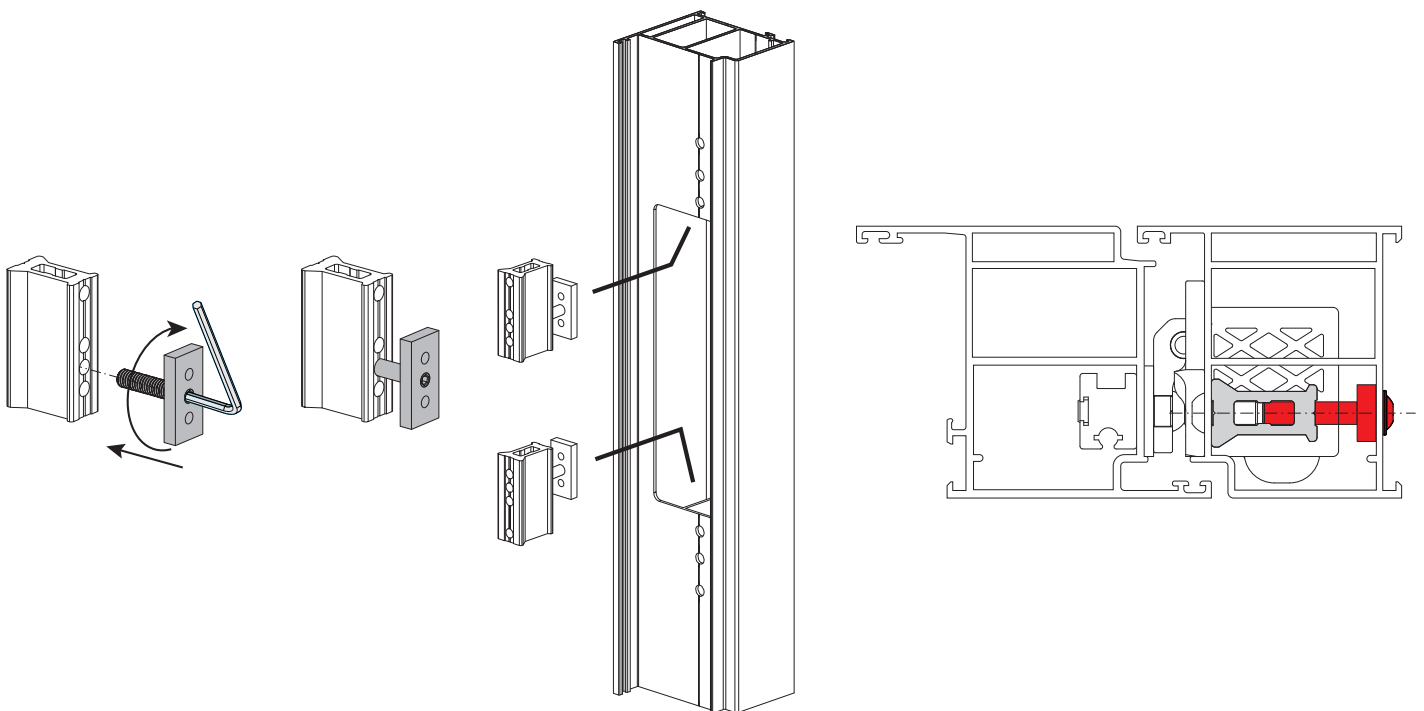


**Technical Features**

Reinforcement kit to be combined with the CHIC Door 160 hinge to make the hinge fixing more stable when the profiles thickness is less than 1.8 mm. Using the Kit on profiles with thickness from 1.6 to 1.8 mm allows to maintain the hinge load capacity performance unchanged. For application details refer to the fitting instructions made available with the CHIC Door 160 hinge.

**Materials**

Extruded aluminium plate  
Stainless steel screws and grub screw



Item code	Description	Note	Base Raw	Anodised Elox	Painted	Trend/Gold Brass	Pieces per pack
00755	CHIC DOOR REINFORCEMENT KIT		X				5