



DELTA PLUS LUG HANDLE

Functions

Lug handle for the lock on the central upright of a door or a sliding window made of aluminium.

Online data sheet



Technical Features

The Delta Plus handle fixing system is accomplished using expansion dowels. The machining required on the profile comprises two simple 10 mm holes and one 9 mm hole which is needed for the pin to pass through.

The stroke of the lock pin is = 15 mm.

The Delta Plus handle has a selector that locks the main lug in the closed position.

This function prevents unintentional opening of the handle, improving security. When the selector is in the block position you cannot move the main open/close lug.

Materials

Handle body made of die-cast aluminium

Lugs, side guards and shims made of polyamide with glass fibre

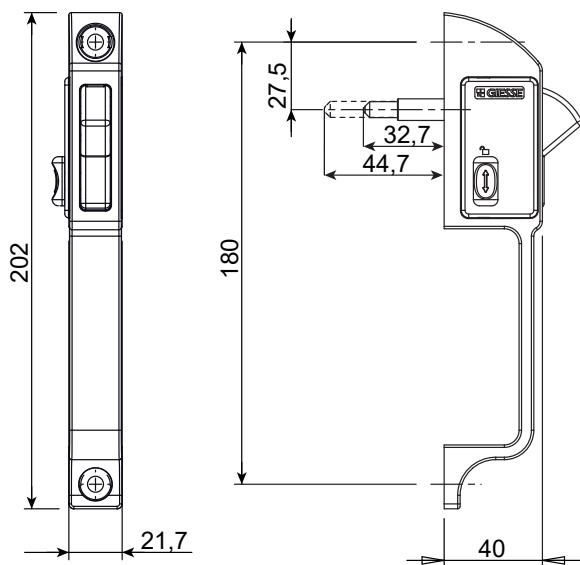
Zinc-coated steel pin

Protective caps for fixing screws made of rubber

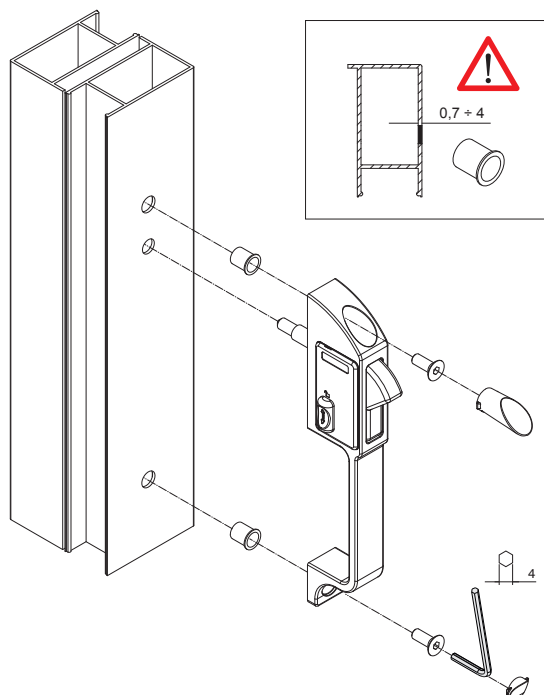
Stainless steel fixing screws

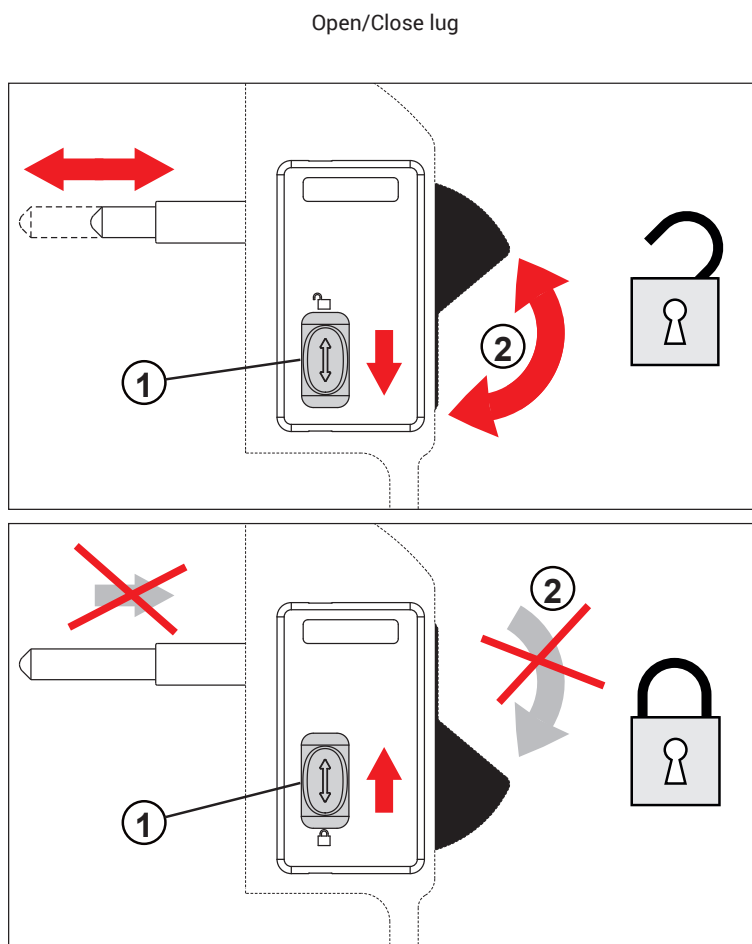
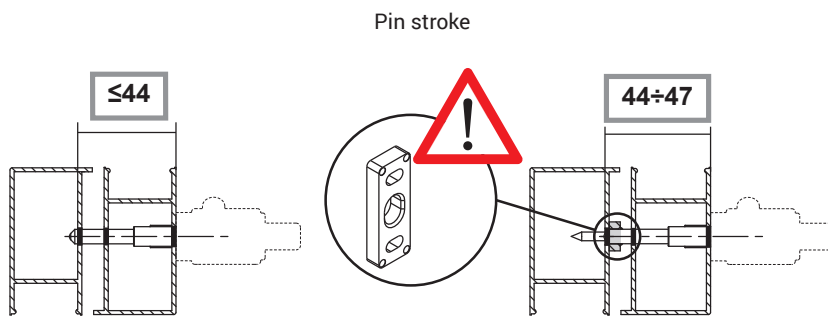
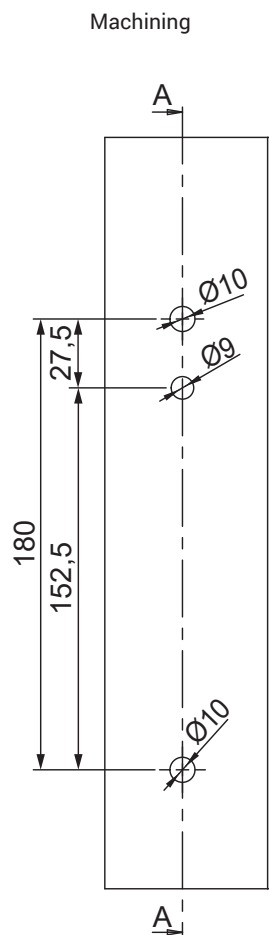
Fixing inserts made of zinc plated steel

Overall dimensions



Handle assembly





Item code	Description	Pin length (sash open) mm	Pin length (sash closed) mm	Pin stroke mm	Base Raw	Anodised Elox	Painted	Trend/Gold Brass	Pieces per pack
02701	DELTA PLUS LUG HANDLE	32,7	47,7	15	X		X		20