

MASTERMONT HANDLE



Functions

Pair of reversible aluminium handles for fitting on the upright or centre rail of the door.

Online data sheet



Technical Features

The MASTER MONT handle is composed of two handles, two flat pins and two fixing plates.

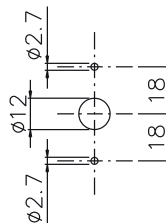
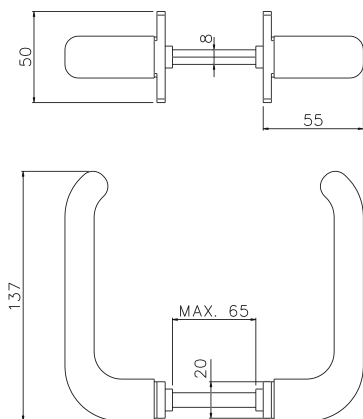
The aluminium pull handle has the same styling as the EURO line of cremones. The handle is applicable on profiles of up to 65 mm wide without cutting the spindle.

Materials

Handle in aluminium
Flat pins 8x4x122 in zinc plated steel
Polyamide fixing plate
Fixing screws, zinc-coated steel
Nickel-plated steel grub screws

Parts

2 Pins 8x4x12 mm
4 CSH self-tapping screws 3.5x13
2 Grub screws M6x10



Item code	Description	Note	Base Raw	Anodised Elox	Painted	Trend/Gold Brass	Pieces per pack
02458	MASTERMONT HANDLE	pair	X		X		20