

PANIC EXIT DEVICE AP100

AP100 MECHANISM



Functions

PUSH BAR type safety panic exit device for slip-on mounting.

Online data sheet



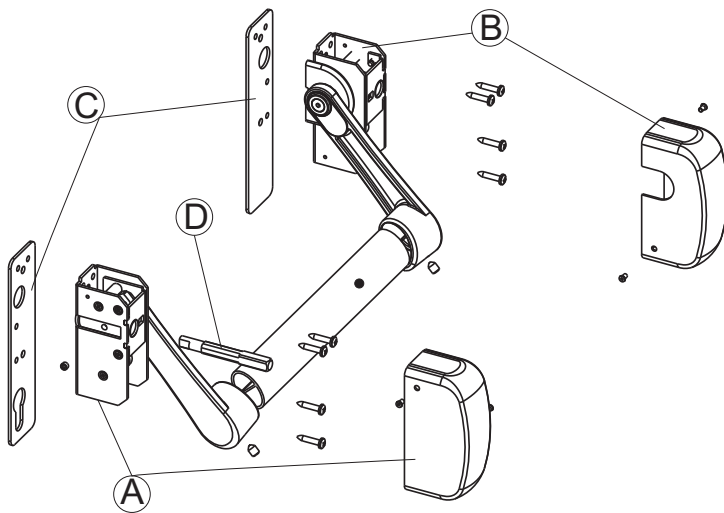
Technical Features

The AP100 mechanism consists of:

- main operating device (A) and its mechanism protection plug
 - secondary operating device (B) and its mechanism protection plug
 - shimming plates (C)
 - square connecting pin between the fastening mechanism and lock (D)
- The device to insert should be combined with the following components:
- oval push-bar, sold separately, available in three different widths
 - the security locks with one-point and three-point fastening, to be chosen depending on the profile and the type of application with specific counterplates
 - specific strikers for the lock used cylinder

Materials

Mechanisms in zinc plated steel
 Painted steel mechanism protection plug
 Brackets in Zamak
 Shimming plates in zinc plated steel
 Grub screws and fixing screws in zinc plated steel



Item code	Description	Note	Base Raw	Anodised Elox	Painted	Trend/Gold Brass	Pieces per pack
07833	PANIC EXIT DEVICE AP100				X		1