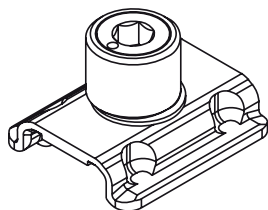


## PAWLS 009



### Functions

Closing element for insertion, in combination with a suitably shaped rod, in the 15/20 mm sash channel.

Online data sheet



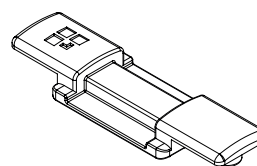
### Technical Features

The pawl is applied directly on the manual quick-fitting rod. In order to install it you need to machine the connection rod.  
For the adjustments and correct application on the profiles please refer to the table.

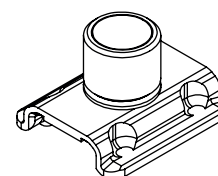
### Materials

Stainless steel

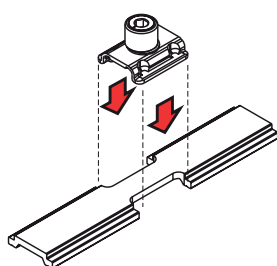
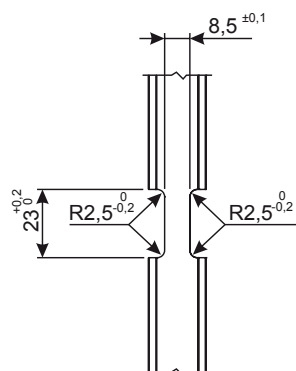
Fastener pawl base



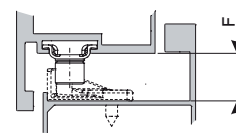
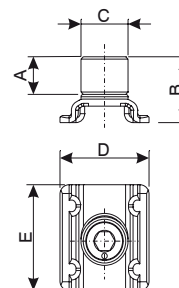
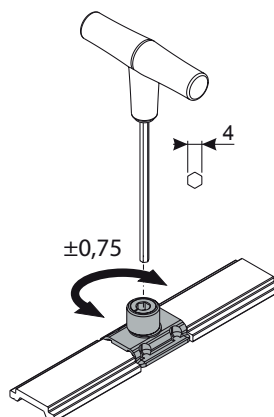
Fastener pawl



Rod machining



Adjustment



| Item code | Description       | PROFILE CROSS - SECTION  | A (mm) | B (mm) | C (mm) | D (mm) | E (mm) | F (mm)  | Adjustment (mm) | Base Raw | Anodised Elox | Painted | Trend/Gold Brass | Pieces per pack |
|-----------|-------------------|--|--------|--------|--------|--------|--------|---------|-----------------|----------|---------------|---------|------------------|-----------------|
| 01373     | LOCKING PAWL      | -  | 6,5    | 11,5   | -      | 19,5   | 22,5   | 11,5    | No              | X        |               |         |                  | 20              |
| 01394     | LOCKING PAWL      | -  | 8      | 14     | 10,3   | 19,5   | 22,5   | 16.5/17 | +/- 0.75        | X        |               |         |                  | 100             |
| 01395     | LOCKING PAWL      | C001-C002-C003-C004-C005-C006-C011-C012-C013-C014-C015-C016-C017-P001-P002-P003-P004-P005-P006-P007-P008-P009-P010 | 5,5    | 11,5   | 10,3   | 19,5   | 22,5   | 11,5    | +/- 0.75        | X        |               |         |                  | 100             |
| 01399     | CLOSING PAWL BASE | C001-C002-C003-C004-C005-C006-C011-C012-C013-C014-C015-C016-C017-P001-P002-P003-P004-P005-P006-P007-P008-P009-P010 | -      | -      | -      | -      | -      | -       | -               | X        |               |         |                  | 100             |
| 04052     | LOCKING PAWL      | C001-C002-C003-C004-C005-C006-C011-C012-C013-C014-C015-C016-C017-P001-P002-P003-P004-P005-P006-P007-P008-P009-P010 | 5,5    | 11,5   | 10,3   | 19,5   | 22,5   | 11,5    | No              | X        |               |         |                  | 100             |
| 04054     | LOCKING PAWL      | -  | 8      | 14     | 10,3   | 19,5   | 22,5   | 16.5/17 | No              | X        |               |         |                  | 100             |