

NP SUPRA - ASIA WINDOW HANDLE



Functions

Reversible window handle for operating Sash and Tilt-and-Turn NP SUPRA window handles.

Online data sheet

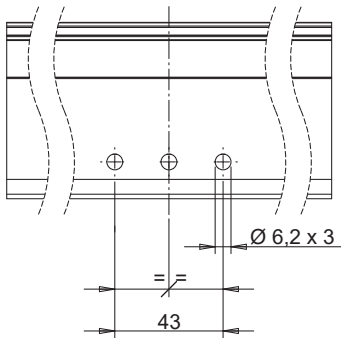
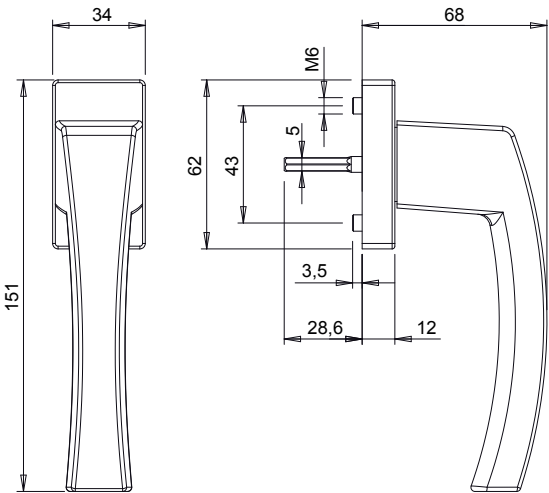


Technical Features

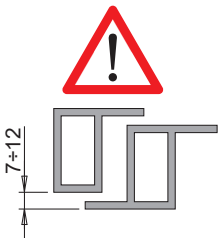
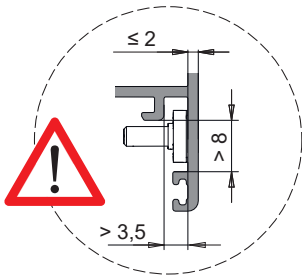
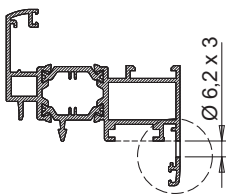
Same window handle for both Sash and Tilt-and-Turn.
Used in combination with NP SUPRA Hardware.
It is locked to the profile by screwing the 2 special screws, pre-assembled on the window handle body, into the fixing plate provided in the mechanism.
There is no need for any milling on the sash tubular profile, it only requires straightforward machining on the profile wall (3 holes Ø6.2 mm), so there is a specific punch.

Materials

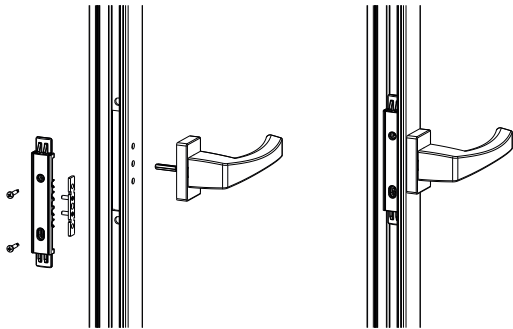
Handle in die-cast aluminium.
Internal components made of GS SILVER PLUS zamak, zinc plated steel and black polyamide.
Zinc plated steel fixing screws.
Die-cast zamak cover.



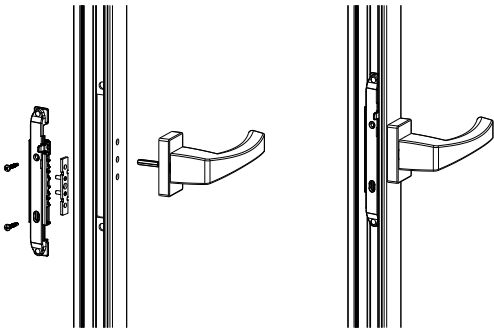
Machining



Sash



Tilt-and-turn window



Item code	Description	PROFILE CROSS - SECTION	Type	Base Raw	Anodised Elox	Painted	Trend/Gold Brass	Pieces per pack
03963	NP - ASIA WINDOW HANDLE	C001-C002-C003-C005-C006-C013-C014-C015-C017	Sash - Tilt-and-Turn	X		X		10