

NP SUPRA - SASH HARDWARE



Functions

Two-way window handle, can be operated with the NP SUPRA window handle, for operating Sash fastening window handles.

Online data sheet

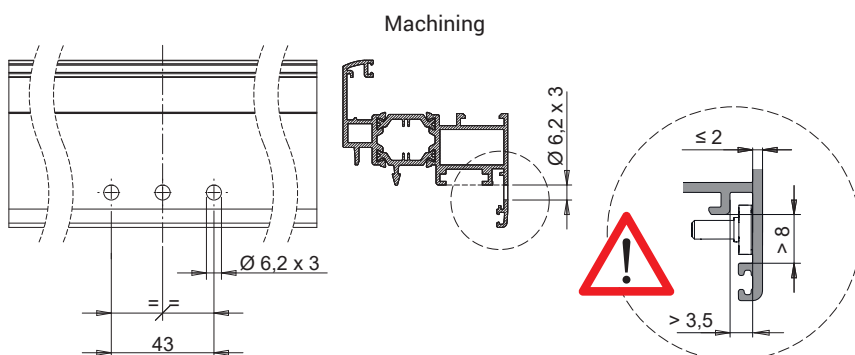
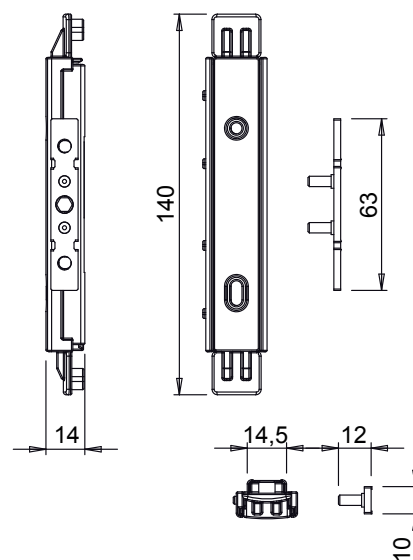


Technical Features

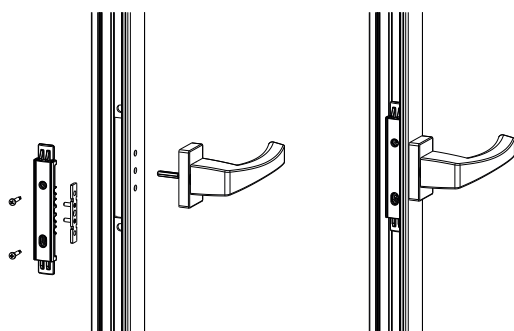
Used in combination with the NP SUPRA window handle (5 mm hexagon). It is locked to the profile with the 2 self-tapping screws supplied. There is no need for any milling on the sash tubular profile, it only requires straightforward machining on the profile wall (3 holes $\text{\O}6.2$ mm). The mechanism is two-way.

Materials

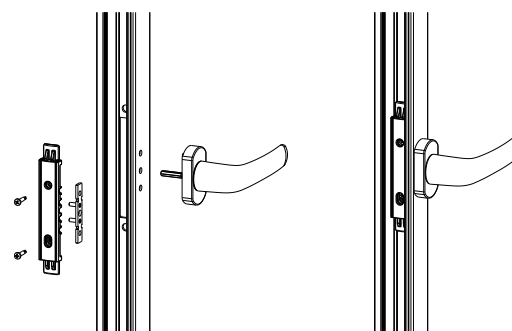
Body, Drive Rod (top and bottom) made of zamak with GS SILVER PLUS finish. Pinion and screws 3.9 x 19 made of zinc plated steel. Stainless steel fixing plate.



Asia window handle



Prima window handle



Item code	Description	PROFILE CROSS - SECTION	Type	Operation	Base Raw	Anodised Elox	Painted	Trend/Gold Brass	Pieces per pack
03954	NP - SASH MECHANISM	C001-C002-C003-C004-C005-C006-C013-C014-C015-C016-C017	Sash	two-way	X				10