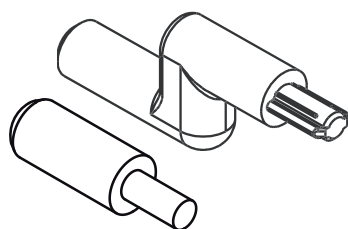


## PROVENCE BOLT TIPS



### Functions

Straight terminals for top and bottom closing of the Provence cremone

Online data sheet



### Technical Features

Available in two versions, straight and offset.

The straight terminal is used in all flush situations or when combined with strikers with a plate and their shims that always go into flush conditions.

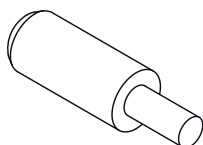
The offset terminal is used when there is an overlap between the sash and frame.

They are engaged at the end of the rod, with a hammer, with the aid of the specific kit that has the purpose of preventing the hammer from accidentally chipping the surface finish of the rods or blocks of the third fastening mechanisms.

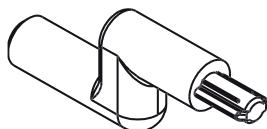
### Materials

Stainless Steel

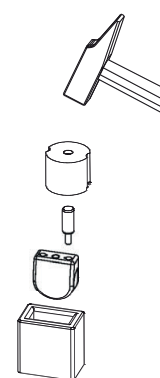
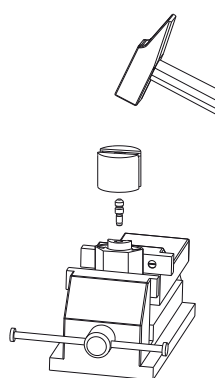
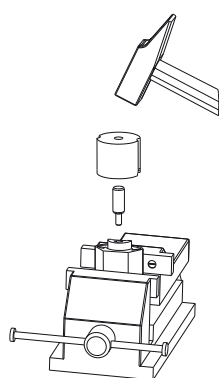
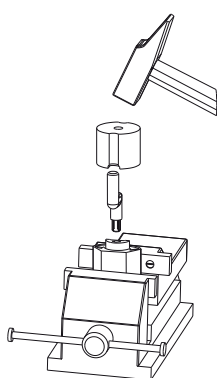
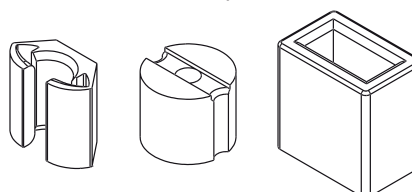
Straight terminal



Offset terminal



Provence bolt tip insertion kit



Item code	Description	Offset terminal	Opening	Base Raw	Anodised Elox	Painted	Trend/Gold Brass	Pieces per pack
02135	PROVENCE STRAIGHT TERMINAL	NO	External / Internal	X				20
02136	PROVENCE OFFSET TERMINAL	YES	External	X				20
03288	PROVENCE BOLT TIP INSERTION KIT			X				50