

HOLE PLUGS



Functions

Component made for closing holes.

Online data sheet



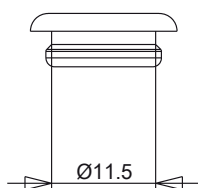
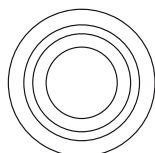
Technical Features

Enables concealing unsightly machining on the profile and protects your fingers from any burrs.

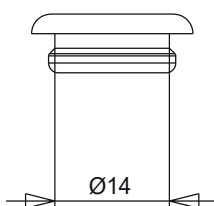
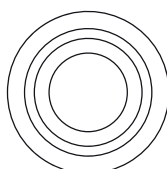
Materials

Black rubber

02331



02332



Item code	Description	Note	Base Raw	Anodised Elox	Painted	Trend/Gold Brass	Pieces per pack
02331	HOLE PLUG	diameter 11.5 mm -black	X				500
02332	HOLE PLUG	diameter 14 mm -black	X				500