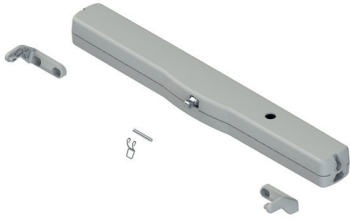


### VARIA SLIM PLUS AND VARIA SLIM PLUS SYNCRO



#### Functions

Electromechanical linear actuators with chain for automation of bottom-hung and top-hung windows, pivoting windows, skylights and other casement types.

#### Technical Features

The actuators in the VARIA SLIM PLUS product family are available exclusively with 230Vac power supply.

This product family is composed of:

- Varia Slim Plus (230Vac) in the "Solo" version, an actuator designed to function individually that cannot be connected to the other actuators in this family to create 2 or more thrust points on a window;
- Varia Slim Plus Syncro (230Vac) composed of a pair of operators (2 pcs) generally fitted to particularly wide windows (more than 1600 mm) to obtain 2 thrust points and with the closing movement perfectly synchronized between the two operators. Suitable also for parallel openings in which opening and closing of the sash must be uniform on all 4 sides. In normal circumstances, depending on the size of the parallel opening, 2 (1 pair) or 4 actuators (2 pairs) are employed. Up to 8 (4 pairs) Varia Slim Plus Syncro (230Vac) actuators can be synchronized simultaneously to obtain 8 thrust points.

Each pair of Varia Slim Plus Syncro actuators produced by Giesse is supplied pre-synchronized. The operations required to synchronize multiple Varia Slim Plus Syncro actuators are straightforward and can be performed quickly. If required, customers can order multiple pairs of actuators that are already synchronized with one another (contact the Technical Department).

The chain is of the double-row 4-link articulated type with internal collection in an aluminium casing (painted).

Chain stroke adjustable by means of DIP switches, with lengths of 200/300/500 mm.

Thrust and pull force = 300N.

Actuators with load-dependent closing stroke cut-off function, connectable in parallel.

The products are equipped with the "soft stop" function, which provides a speed reduction in the final stroke distance, and the "relax" function, wherein the gears are released once the closed position has been reached in order to reduce mechanical stress.

The products are equipped with diagnostic LEDs.

The pack contains 2 frame fixing brackets for each actuator while the sash fixing brackets are sold separately and must be selected on the basis of the type of casement to be automated.

#### Materials

Painted die-cast aluminium external guard

Galvanized steel chain

Painted Zamak frame brackets

Stainless steel fixing clips

#### Parts

VARIA SLIM PLUS (230Vac)

One actuator

Pair of operator to frame fixing brackets

A drilling template for bottom-hung and top-hung applications

One quick-fit fixing clip (spring + pin)

VARIA SLIM PLUS SYNCRO (230Vac)

Pair (2 pcs) of actuators and two pairs of operator to frame fixing brackets

Two pairs of operator to frame fixing brackets (vertical assembly)

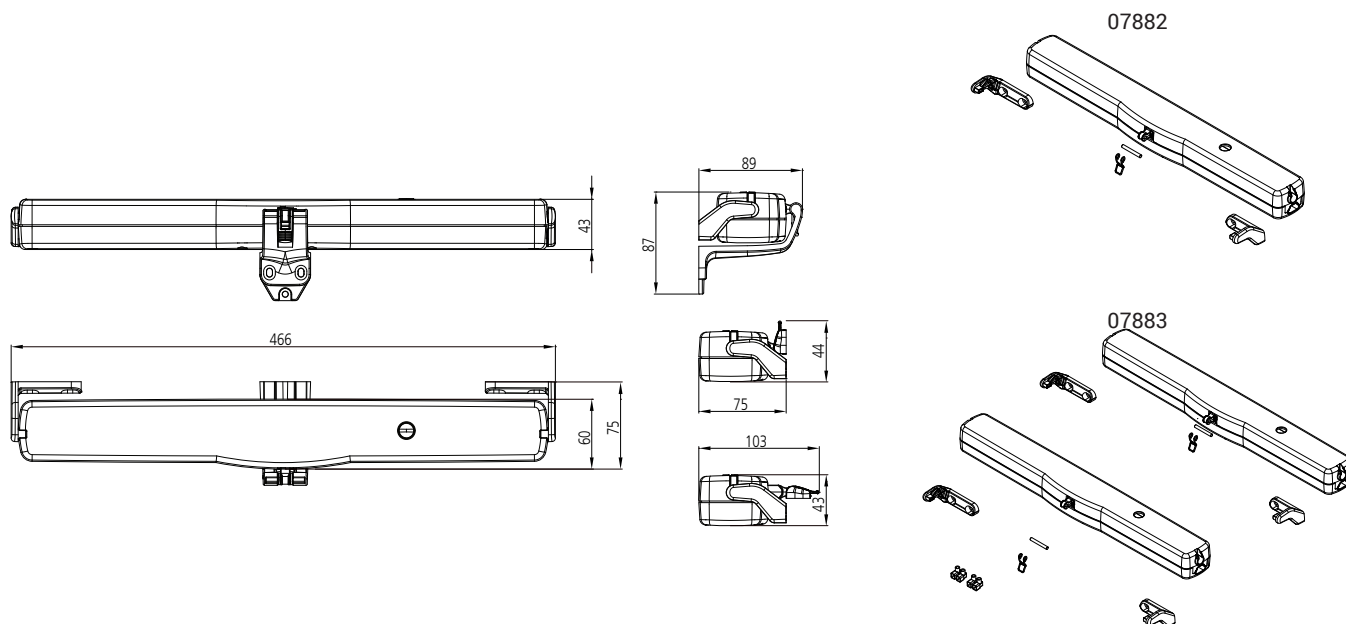
A drilling template for bottom-hung and top-hung applications

Two quick-fit fixing clips (spring + pin)

Two connection terminals

#### Finish

Black (500) RAL 9005, White (410) RAL 9010, Grey (970) RAL 9006



## Technical data

Model	VARIA SLIM PLUS-230V	VARIA SLIM PLUS SYNCRO-230V
Item code	07882	07883
Thrust and pull force	300N	300N
Stroke (mm)	200/300/500	200/300/500
Synchronization	NO	YES
Power supply voltage	110 ÷ 230V AC 50/60 Hz	110 ÷ 230V AC 50/60 Hz
Nominal load current input	0,160 A	0,160 A
Nominal load absorbed power	~ 36W	~ 36W
Idle travel speed	7,2 mm/s	7,2 mm/s
Duration of idle stroke	70 s	70 s
Double electrical insulation	YES	YES
Service type	S2 3 minutes	S2 3 minutes
Operating temperature	-5 ÷ 65 °C	-5 ÷ 65 °C
Electrical devices protection rating	IP 32	IP 32
Soft Stop	YES	YES
Relax function	YES	YES
Casement connection adjustment	Position self-detection	Position self-detection
Connection in parallel	SI (max 30 actuators)	SI (max 30 actuators)
Power cable length	2 m	2,5 m
Opening stroke limit selection	Electronics with DIP switch adjustment	Electronics with DIP switch adjustment
Closing limit switch	Power absorption type	Power absorption type
Dimensions mm	456 x 60 x 43 mm	456 x 60 x 43 mm
Unit weight kg	1,43 Kg	1,43 Kg
Static holding force	1700N	1700N
Brackets supplied with each actuator	Standard fixing brackets for frame (sash brackets to be ordered separately)	Standard fixing brackets for frame (sash brackets to be ordered separately)

Item code	Description	Note	Base Raw	Anodised Elox	Painted	Trend/Gold Brass	Pieces per pack
07882	VARIA SLIM PLUS 230 V				X		1
07883	VARIA SLIM PLUS SYNCRO 230 V	pair			X		1