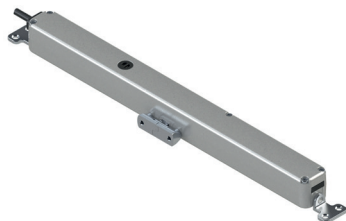


## VARIA SLIM SMALL



### Functions

Linear electromechanical chain actuator for automation of bottom-hung and top-hung windows; thanks to its compact size this actuator can be easily recessed in the window.

### Technical Features

Linear electrical actuator with 3-link chain contained in a suitable metal shell for handling of bottom-hung and top-hung windows.

Thanks to its compact dimensions Varia Slim Small can be concealed inside the casement.

The Varia Slim Small actuator operates with a 24Vdc power supply and it can be connected in parallel.

Thrust force and pull force of 200N.

The product is supplied complete with tilting frame fixing brackets and with a universal sash fixing bracket (fixing screws not supplied).

The chain can be adjusted by means of DIP switches to the following lengths: 70, 125, 170 and 210 mm.

The actuator is equipped with the "relax" function to ensure reduced stress on the gears and internal mechanical components because they are brought to the optimal position on completion of each closing cycle.

The product can be connected to the Slim Lock electric lock art. 07895.

### Materials

Painted die-cast aluminium external guard

Galvanized steel chain

Brackets in Zamak

### Parts

One actuator

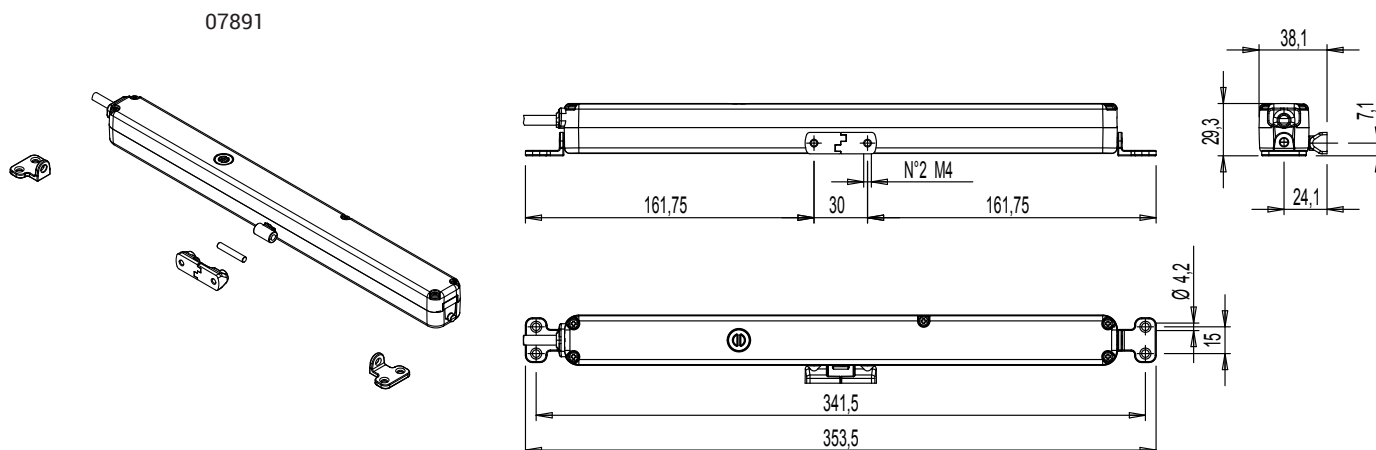
Two operator to frame fixing brackets

One chain to sash fixing bracket (top-hung window)

One chain to sash bracket fixing pin

### Finish

Grey (970) RAL 9006



# CHAIN ACTUATORS

## Technical data

Model	VARIA SLIM SMALL-24V
Item code	07891
Pull force	200N
Thrust force	200N
Stroke (mm)	70 / 125 / 170 / 210
Synchronization	NO
Power supply voltage	24 V= (DC)
Nominal load current input	0,32 A
Nominal load absorbed power	7,5 W
Idle travel speed	6 mm/s
Maximum duration of idle stroke	27 s
Double electrical insulation	Low Voltage
Service type	S2 3 minutes
Operating temperature	-5°C ÷ +65°C
Electrical devices protection rating	IP32
Soft Stop	NO
Relax function	YES
Self-learning of window overlaps	Power absorption type
Connection in parallel	YES
Power cable length	2 m
Opening stroke limit selection	Electronics with DIP switch adjustment
Closing limit switch	Power absorption type
Overload protection	Power absorption type
Dimensions mm	28 x 28 x 310 mm
Unit weight kg	0,72 Kg
Static holding force	1000N
Brackets supplied	Standard support brackets

Item code	Description	Note	Base Raw	Anodised Elox	Painted	Trend/Gold Brass	Pieces per pack
07891	VARIA SLIM SMALL 24V				X		1