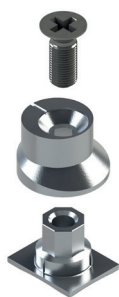


ЗАПОРНЫЕ ЦАПФЫ

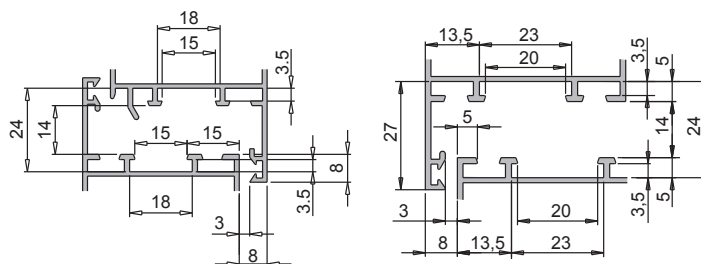
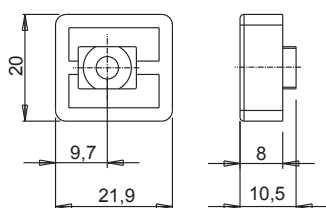
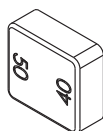
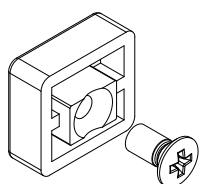
Описание

Запорная цапфа для использования с ответной планкой, необходимая для создания точки заперения.

Онлайновая техниче-
ская спецификация

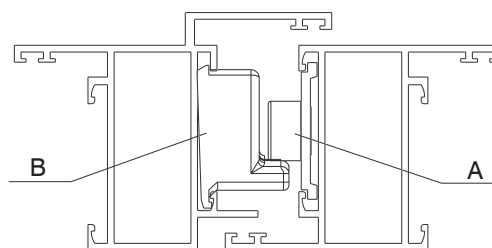
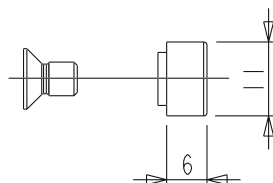
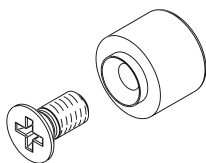


01319K

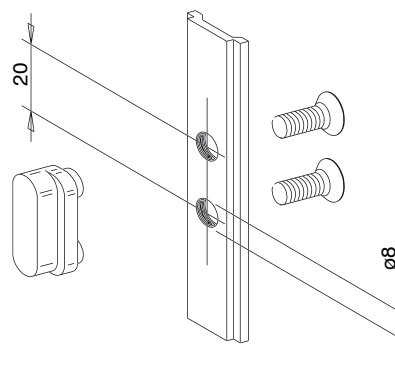
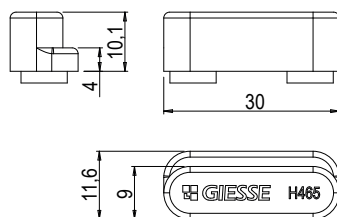
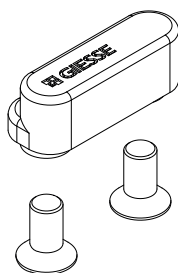


A = Цапфа запорная B = планка ответная

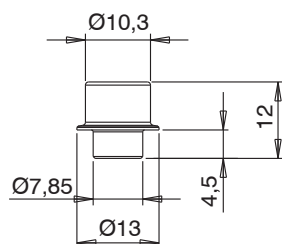
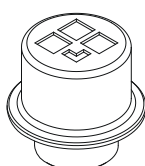
01332



01333

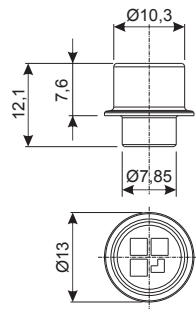


01352K

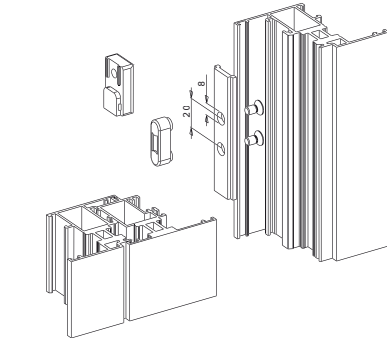
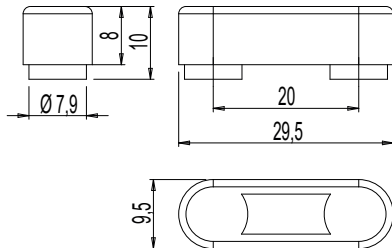
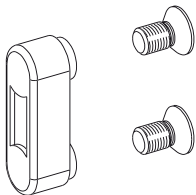


ПЛАНКИ ОТВЕТНЫЕ И МЕХАНИЗМЫ ЗАПИРАНИЯ

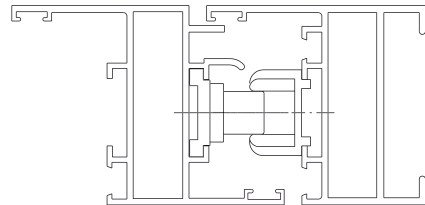
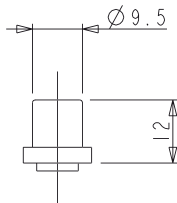
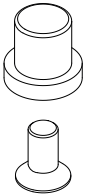
01356K



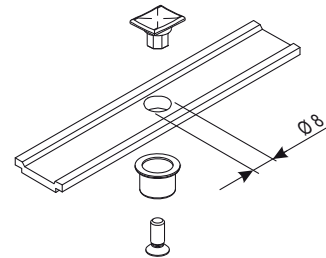
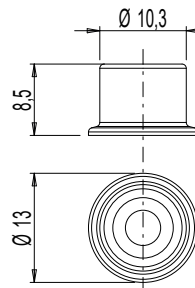
02315K



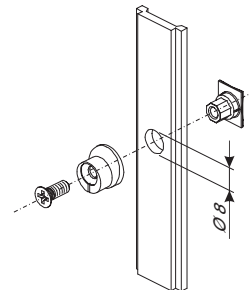
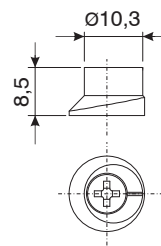
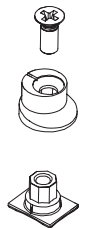
02320



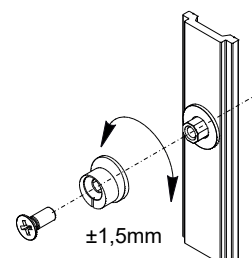
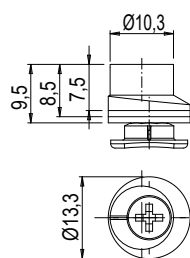
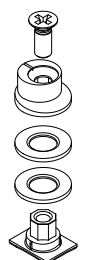
04027K



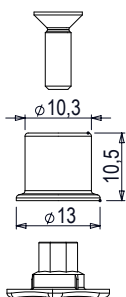
04030K



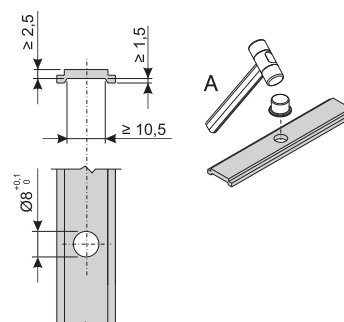
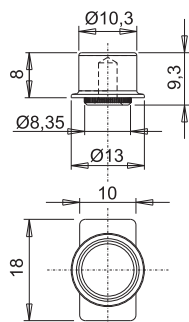
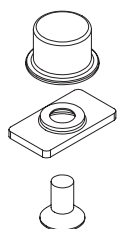
04042K



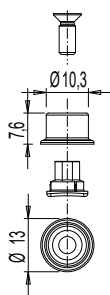
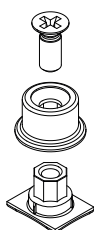
04049



04050



04067



| АРТИКУЛ | Описание | ПОПЕРЕЧНОЕ СЕЧЕНИЕ ПАРЫ ПРОФИЛЕЙ | Поверхность - не окрашенная | Поверхность Анодированная | Поверхность Окрашенная | Линия Trend | Число деталей в упаковке |
|---------|--------------------------------|--|-----------------------------|---------------------------|------------------------|-------------|--------------------------|
| 01319K | ЗАПОРНАЯ ЦАПФА | C007-C008 | X | | | | 200 |
| 01332 | ЗАПОРНАЯ ЦАПФА | | X | | | | 50 |
| 01333 | ЗАПОРНАЯ ЦАПФА | C001-C002-C003-C004-C005-C006-C007-C008-C009-C010-C011-C012-C013-C014-C015-C016-C017 | X | | | | 50 |
| 01352K | ЗАПОРНАЯ ЦАПФА | C001-C002-C003-C004-C005-C006-C007-C008-C009-C010-C011-C012-C013-C014-C015-C016-C017-P001-P002-P003-P004-P005-P006-P007-P008-P009-P010 | X | | | | 400 |
| 01356K | ЗАПОРНАЯ ЦАПФА | C001-C002-C003-C004-C005-C006-C007-C008-C009-C010-C011-C012-C013-C014-C015-C016-C017-P001-P002-P003-P004-P005-P006-P007-P008-P009-P010 | X | | | | 400 |
| 02315K | ЗАПОРНАЯ ЦАПФА | | X | | | | 500 |
| 02320 | ЗАПОРНАЯ ЦАПФА | | X | | | | 500 |
| 04027K | ЗАПОРНАЯ ЦАПФА НЕ РЕГУЛИРУЕМАЯ | C001-C002-C003-C004-C005-C006-C007-C008-C009-C010-C011-C012-C013-C014-C015-C016-C017-P001-P002-P003-P004-P005-P006-P007-P008-P009-P010 | X | | | | 200 |
| 04030K | ЗАПОРНАЯ ЦАПФА РЕГУЛИРУЕМАЯ | C001-C002-C003-C004-C005-C006-C007-C008-C009-C010-C011-C012-C013-C014-C015-C016-C017-P001-P002-P003-P004-P005-P006-P007-P008-P009-P010 | X | | | | 200 |
| 04042K | ЗАПОРНАЯ ЦАПФА РЕГУЛИРУЕМАЯ | C001-C002-C003-C004-C005-C006-C007-C008-C009-C010-C011-C012-C013-C014-C015-C016-C017-P001-P002-P003-P004-P005-P006-P007-P008-P009-P010 | X | | | | 200 |
| 04049 | ЗАПОРНАЯ ЦАПФА НЕ РЕГУЛИРУЕМАЯ | | X | | | | 200 |
| 04050 | ЗАПОРНАЯ ЦАПФА НЕ РЕГУЛИРУЕМАЯ | C001-C002-C003-C004-C005-C006-C007-C008-C009-C010-C011-C012-C013-C014-C015-C016-C017-P001-P002-P003-P004-P005-P006-P007-P008-P009-P010 | X | | | | 200 |
| 04067 | ЗАПОРНАЯ ЦАПФА НЕ РЕГУЛИРУЕМАЯ | C001-C002-C003-C004-C005-C006-C011-C012-C013-C014-C015-C016-C017-P001-P002-P003-P004-P005-P006-P007-P008-P009-P010 | X | | | | 200 |