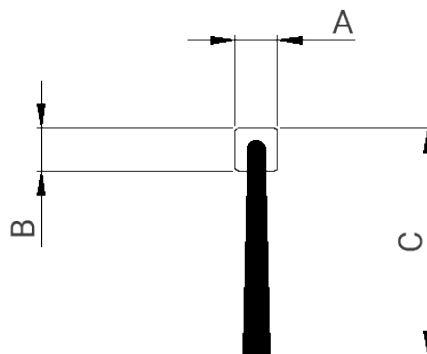
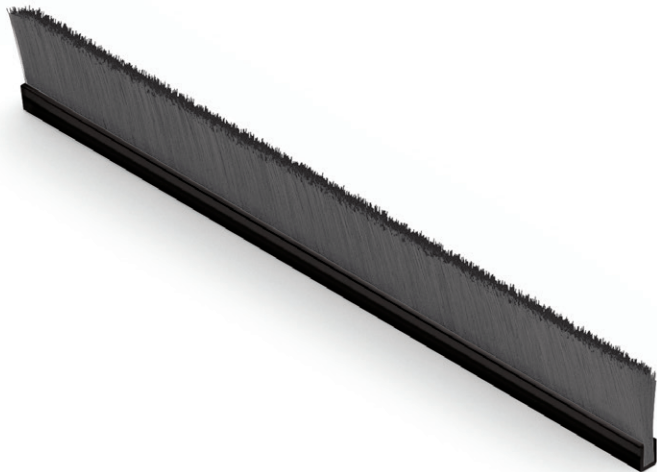


# FLEX-BRUSH:

## COILABLE BRUSH PILE SEALS



Extruded square base for sealing of revolving doors, escalators, garage doors or industrial doors. Monofilament yarn available in Polypropylene. Polyamide 6 required special conditions for minimum order quantities, lead time and price. Other base shapes and dimensions are available upon request.

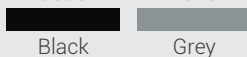
### TECHNICAL SPECIFICATION

#### STANDARD SOLUTIONS

A Base width	B Base height	C Brush height	Brush density
3 mm	3 mm	10 – 50 mm (interval of 1 mm)	SD15
3,5 mm	3,5 mm		
4 mm	4 mm		HD15
4,5 mm	4,5 mm		

#### Polypropylene colours (≈ RAL)

9005      7045



#### Polyamide colours (≈ RAL)

9005

