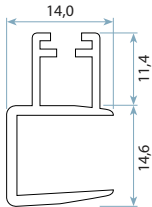
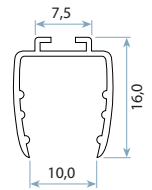
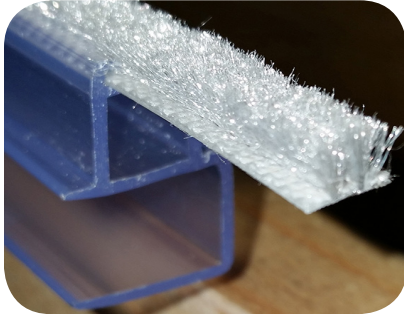


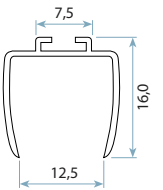
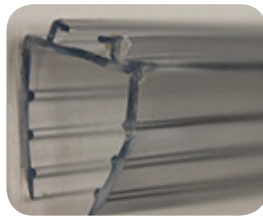
# Glass Clip Edge: with weatherseal



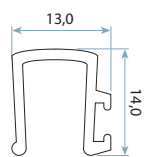
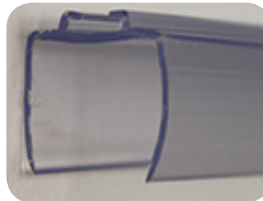
DGCE123



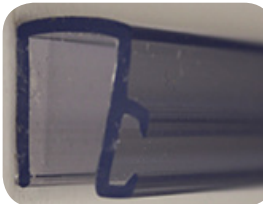
DGCE123



DGCE153



DGCE123A250



Codes refer to the size of the glass:  
DGCE12 = glass size of 12 mm thickness.  
DGCE15 = glass size of 15 mm thickness.

All seal entry points are 7,5 mm width.

Glass size 12 and above suits  
Poly-Bond 69  
Q-Lon 69  
Fin-Seal 69

Glass size 6 & 8 suits  
Poly-Bond 48  
Q-Lon 48  
Fin-Seal 48



BB Adaptor

Code	Type	Width mm	Pile	Pile Colour
DGCE123	Top/Bottom	12.00	-	-
DGCE153	Top/Bottom	15.00	-	-
DGCE63	Side	6.00	-	-
DGCE83	Side	8.00	-	-
DGCE123A250	Side	12.00	-	-
DGCE123	Side	12.00	-	-
DGCE12369504	Top/Bottom	12.00	PB69504	Grey
DGCE15369504	Top/Bottom	15.00	PB69504	Grey
DGCE12369504	Side	12.00	PB69504	Grey
DGCE12369504B	Side	12.00	PB69504B	Black
BB69AD	BB Adaptor	Black	-	-

\*length 3 metre



Sound



Cold  
Smoke



Weather



Draughts  
& Dust



Light

## Head Office:

44 Riverside Road Chipping Norton NSW 2170  
Ph: +61 2 8707 2000 Fax: +61 2 8707 2070  
Email: salesnsw@schlegel.com

## Victoria:

Factory 16 / 2-4 Damian Court Dandenong VIC 3175  
Ph: +61 3 9793 4100 Fax: +61 3 9793 4566  
Email: salesvic@schlegel.com

## Queensland:

2 / 17 Lawrence Drive Nerang QLD 4211  
Ph: +61 7 5527 3999 Fax: +61 7 5527 3393  
Email: salesqld@schlegel.com

## Western Australia:

3 / 45 Truganina Road Malaga WA 6090  
Ph: +61 8 9248 4500 Fax: +61 8 9248 4855  
Email: saleswa@schlegel.com

## New Zealand:

Burrett Business Park, 10d Burrett Ave  
Penrose, Auckland 1061  
Ph: +64 9 478 4001 Fax: +64 9 478 4002  
Email: salesnz@schlegel.com

Care has been taken to ensure that the contents of this publication are accurate, but Schlegel and its subsidiary companies do not accept responsibility for errors or for information that is found to be misleading. Suggestions for, or description of, the end use or application of products or methods of working are for information only. All dimensions are in mm and are nominal. Schlegel reserve the right to change specification without prior notice.

Schlegel's names and logos and all related trademarks (including 'SCHLEGEL', 'SCHLEGEL Red Square Logo', 'Red Square Logo', trade names, and other intellectual property) are the property of Schlegel Acquisition Holdings Limited trading as Schlegel International and cannot be used without its express prior written permission. All rights reserved.

© Schlegel Acquisition Holdings Limited trading as Schlegel International 2016.