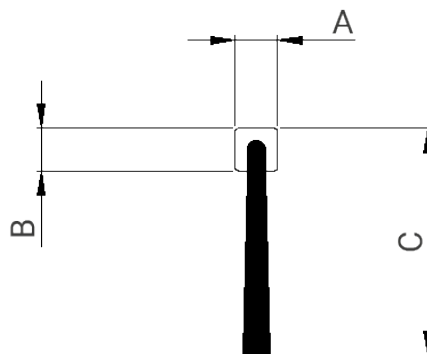
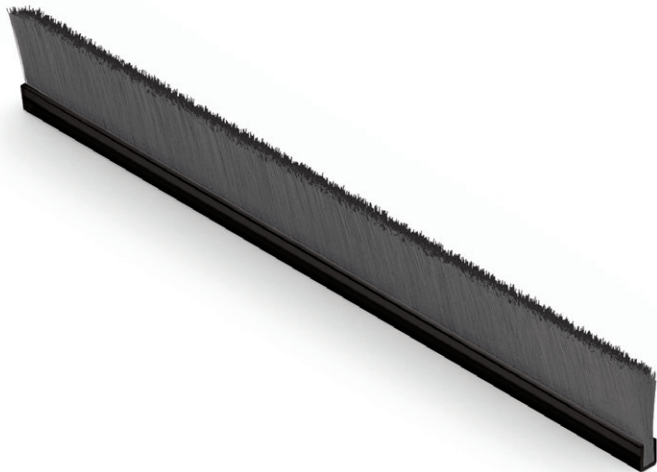


FLEX-BRUSH:

COILABLE BRUSH PILE SEALS



Extruded square base for sealing of revolving doors, escalators, garage doors or industrial doors. Monofilament yarn available in Polypropylene. Polyamide 6 required special conditions for minimum order quantities, lead time and price. Other base shapes and dimensions are available upon request.

TECHNICAL SPECIFICATION

STANDARD SOLUTIONS

| A Base width | B Base height | C Brush height | Brush density |
|--------------|---------------|-------------------------------|---------------|
| 3 mm | 3 mm | 10 – 50 mm (interval of 1 mm) | SD15 |
| 3,5 mm | 3,5 mm | | |
| 4 mm | 4 mm | | HD15 |
| 4,5 mm | 4,5 mm | | |

Polypropylene colours (≈ RAL)

9005 7045



Polyamide colours (≈ RAL)

9005

