



Heavy Vehicle Spray Suppressant: flexible, arched and straight brush systems

WORLD'S LEADING: NON-CORROSIVE, FLEXIBLE & DURABLE



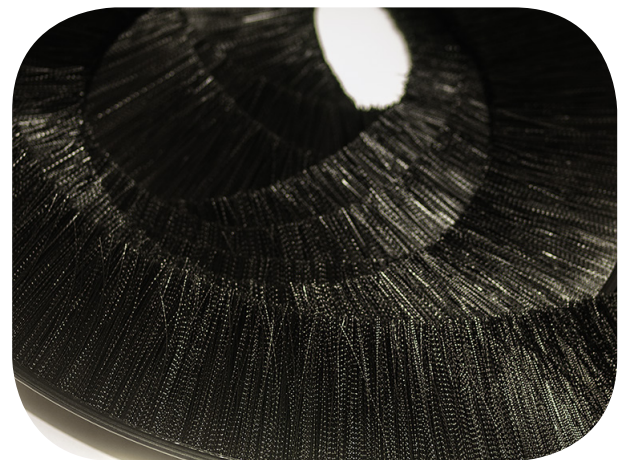
Schlegel Spray Suppressant Brush Systems: increased safety, decreased water spray

Schlegel provide the highest standards in quality, Australian made spray suppressant and mounting options for all trucks and trailers. The long-lasting polypropylene filaments result in greater driver vision and cleaner trucks.

Schlegel lead the way with spray suppressants that are designed for outstanding performance. A minimal investment can pay off quickly with safety, integrity and appearance for your fleet or individual vehicle.



- Improves driver visibility as much as 97%
- Works effectively to minimise road water spray, dirt, grime and chemicals
- Redirects spray downwards, away from truck mirrors and other traffic
- Multiple sizes and shapes to fit most vehicles
- Minimal cost to outfit entire fleets
- Durable polypropylene fibers are strong, won't break
- Trucks stay cleaner and signage looks better longer
- Easy to install and maintain
- Unique design helps prevent brake/tyre heat build up
- Backed by Schlegel Quality and unmatched customer service
- Schlegel is an internationally accredited company with BSI ISO 9001



Flexible Spray Suppressant

Available in rolls & lengths

Durable polypropylene backing and mounting strip



Code	Brush Size (mm)	Length
TPSSU75	75	60 metre roll
TPSSU100	100	60 metre roll
TPSSU10727	175	1.82 metre lengths
TPSSU10737	275	1.82 metre lengths

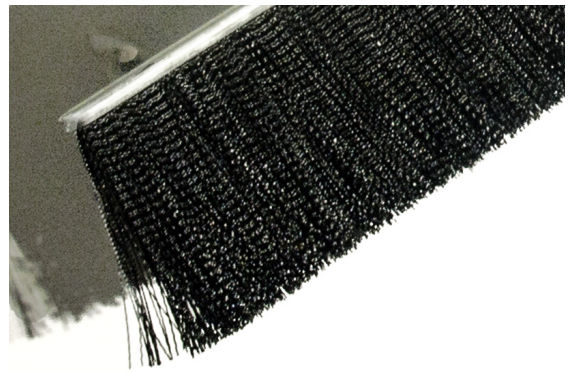
Please see back page for mounting accessories

Rigid straight and arched systems: superior quality steel mounting

Rigid Spray Suppressant

Available in two length options

Either galvanised (G) or stainless steel (S) mounting strip



Code	Brush Size (mm)	Metre Length
TPSSU75GB1820 (G)	75	1.82
TPSSU75SB1820 (S)	75	1.82
TPSSU100GB1820 (G)	100	1.82
TPSSU100SB1820 (S)	100	1.82
TPSSU75GB3000 (G)	75	3.00
TPSSU75SB3000 (S)	75	3.00
TPSSU100GB3000 (G)	100	3.00
TPSSU100SB3000 (S)	100	3.00

Pre-formed Wheel Arch Spray Suppressant

High density polypropylene brush

Stainless steel mounting strip

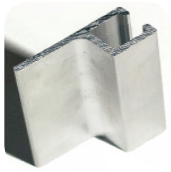


Code	Brush Size (mm)	Length (mm)
TPSSARCH100STUD	100	1676 with bolt & nut



Mounting Clip (Metal):

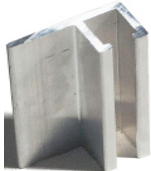
■ Code TPSSUCLIP



'H' Carrier Mill Aluminium:

■ Code BBS3000H

■ 3.00 metre

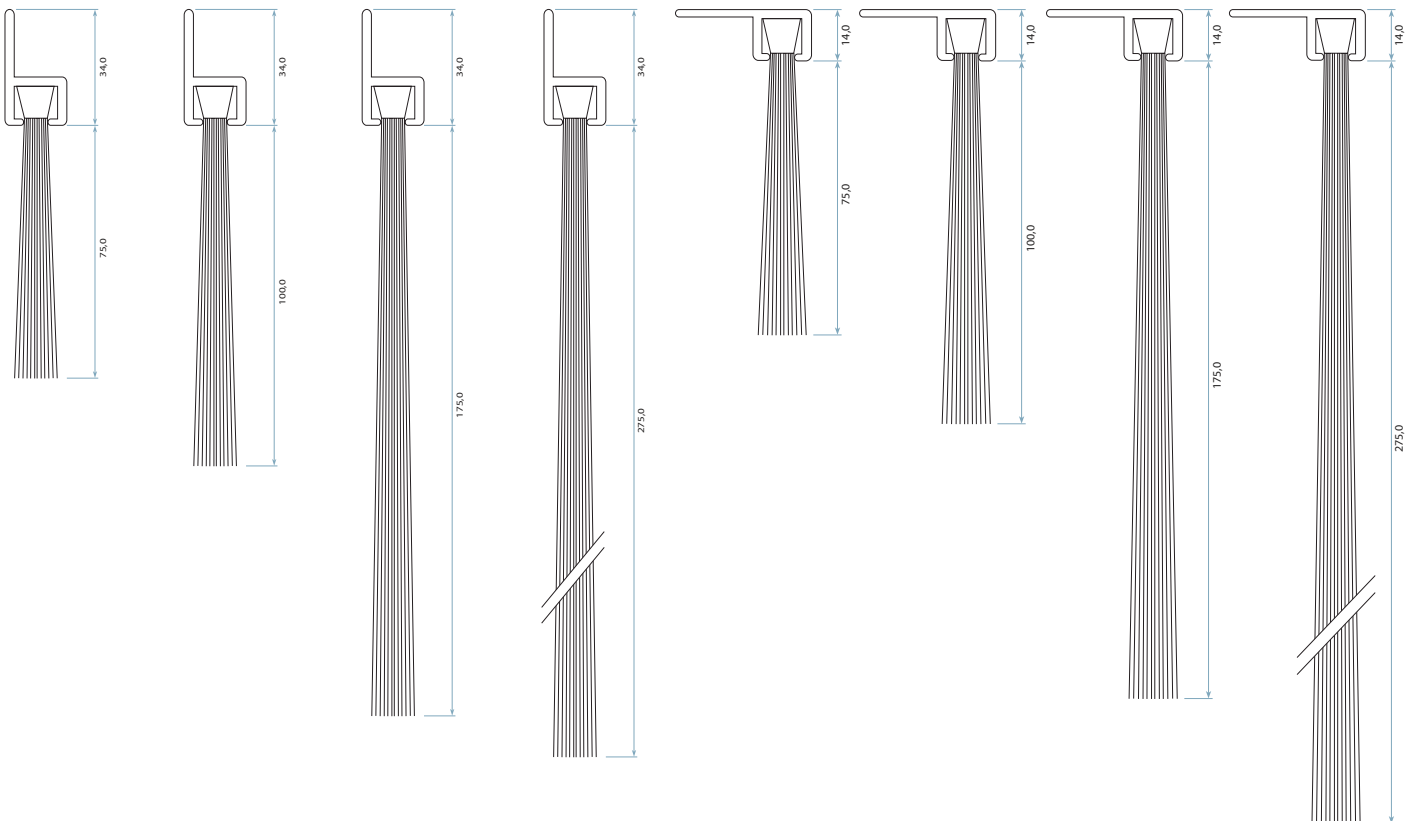


'F' Carrier Mill Aluminium:

■ Code BBS3000F

■ 3.00 metre

MOUNTING OPTIONS & ACCESSORIES:



Head Office:

44 Riverside Road Chipping Norton NSW 2170
Ph: +61 2 8707 2000 Fax: +61 2 8707 2070
Email: salesnsw@schlegel.com

Victoria:

Factory 16 / 2-4 Damian Court Dandenong VIC 3175
Ph: +61 3 9793 4100 Fax: +61 3 9793 4566
Email: salesvic@schlegel.com

Queensland:

2 / 17 Lawrence Drive Nerang QLD 4211
Ph: +61 7 5527 3999 Fax: +61 7 5527 3393
Email: salesqld@schlegel.com

Western Australia:

3 / 45 Truganina Road Malaga WA 6090
Ph: +61 8 9248 4500 Fax: +61 8 9248 4855
Email: saleswa@schlegel.com

New Zealand:

Burrett Business Park, 10d Burrett Ave
Penrose, Auckland 1061
Ph: +64 9 478 4001 Fax: +64 9 478 4002
Email: salesnz@schlegel.com

Care has been taken to ensure that the contents of this publication are accurate, but Schlegel and its subsidiary companies do not accept responsibility for errors or for information that is found to be misleading. Suggestions for, or description of, the end use or application of products or methods of working are for information only. All dimensions are in mm and are nominal. Schlegel reserve the right to change specification without prior notice. Schlegel's names and logos and all related trademarks (including 'SCHLEGEL', 'SCHLEGEL Red Square Logo', 'Red Square Logo', trade names, and other intellectual property are the property of Schlegel Acquisition Holdings Limited trading as Schlegel International and cannot be used without its express prior written permission. All rights reserved.

© Schlegel Acquisition Holdings Limited trading as Schlegel International 2016.

www.schlegel.com

Feb 15 | V1 | SSBS