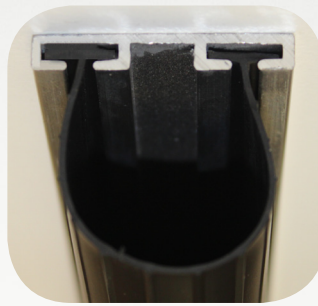
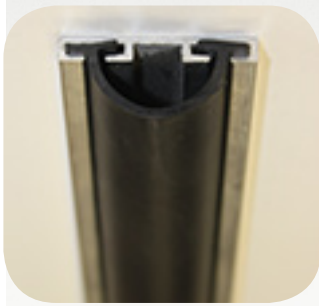


Schlegel

Schlegel Bristle Brush & Garage Door Seal: superior filament and flame retardant brush

WORLD'S LEADING NON CORROSIVE RIGID BACKED



The Schlegel
Promise!

Quality Bristle Brush:

for an extensive range of gaps

Schlegel produce resistant, durable, rigid backed brush designed to fit directly into retaining kerf or extruded aluminium carriers. Schlegel products are “Best in Class”.

The nylon brush filament has excellent mechanical properties to ensure long lasting protection against weather and unwanted substances. The backing comes in economical galvanised steel and stainless steel, both non rust, that enable firmness and ease of use for installation and maintenance.

- Water, light, dust, draught, insect, vermin and weather resistant
- A-Grade nylon 6 filament brush, international quality standards ISO9001 tested
- Available in flame retardant (FR), international quality standards UL94 E86615, ISO 1210, 3795, 4589, 306, 75 tested and more (includes incandescent wire test 850 °C IEC 695), UV stabilised
- Galvanised backing for guaranteed non-ageing and free from stretcher strain and rust
- Stainless Steel 304 high performance superalloy backing is also corrosion resistant
- Available with fin (please see image below)
- Variety of sizes and carriers (brush & carrier kits available)
- Bristle brush itself may be push fitted into saw kerf
- Sturdy yet elastic; impact and abrasion resistant
- Backed by Schlegel warranty
- Backed by the Schlegel Promise

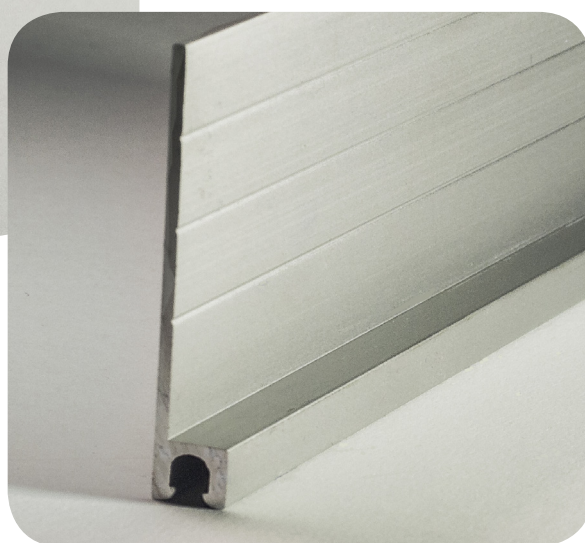
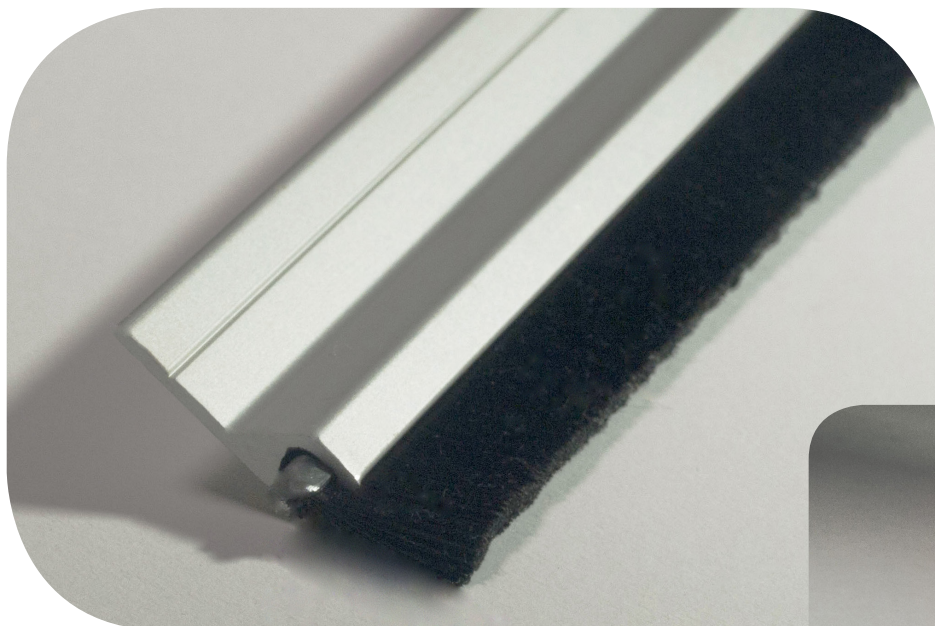
For a variety of gaps and solutions: swing, hinged and rotating doors, garage tilt and roller doors, glass cleaning machines, gates, blackout strips for office partitioning and automotive gear levers, door bottoms, bus doors, electrical services, computer applications, servers, cables and others.

Bristle Brush Protection



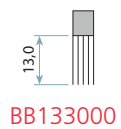
Bristle Brush Flame Retardant Protection





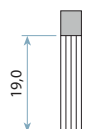
H Carrier 0°

BBS3000



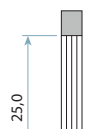
BB133000

BBS3000



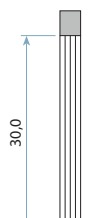
BB193000

BBS3000



BB253000

BBS3000



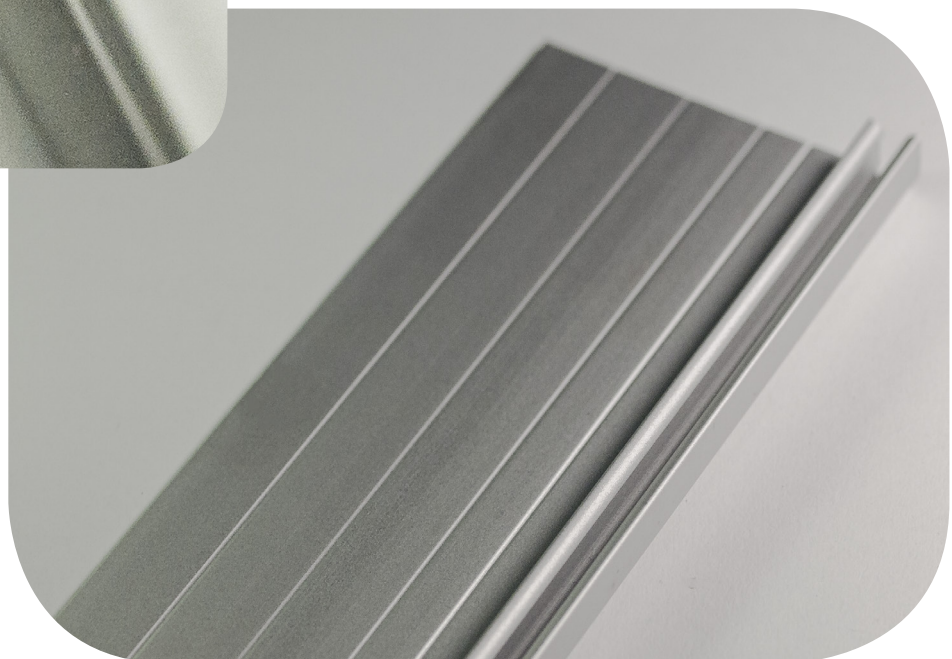
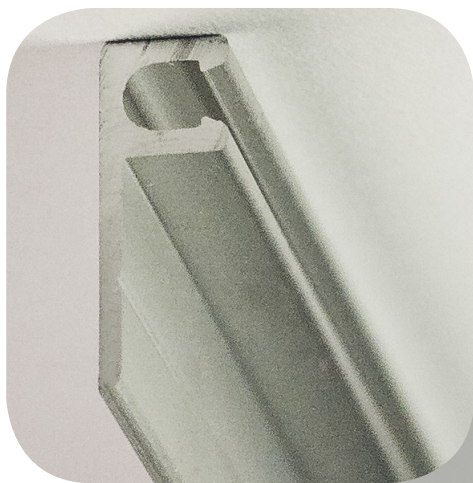
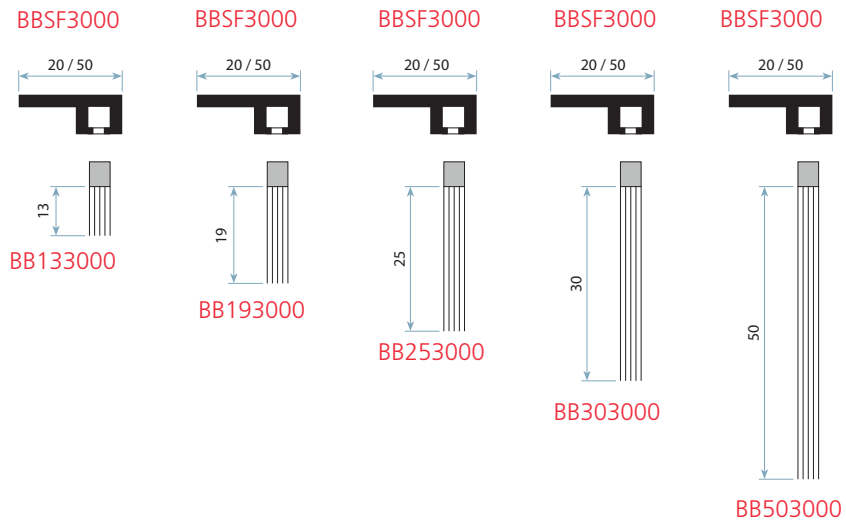
BB303000

BBS3000



BB503000

F Carrier 90°

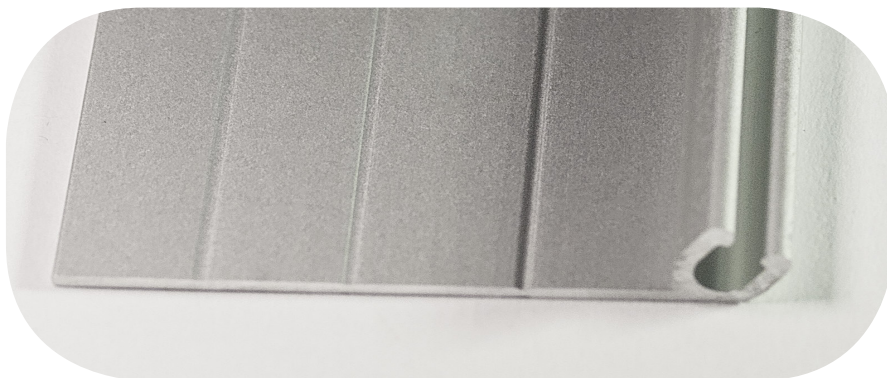
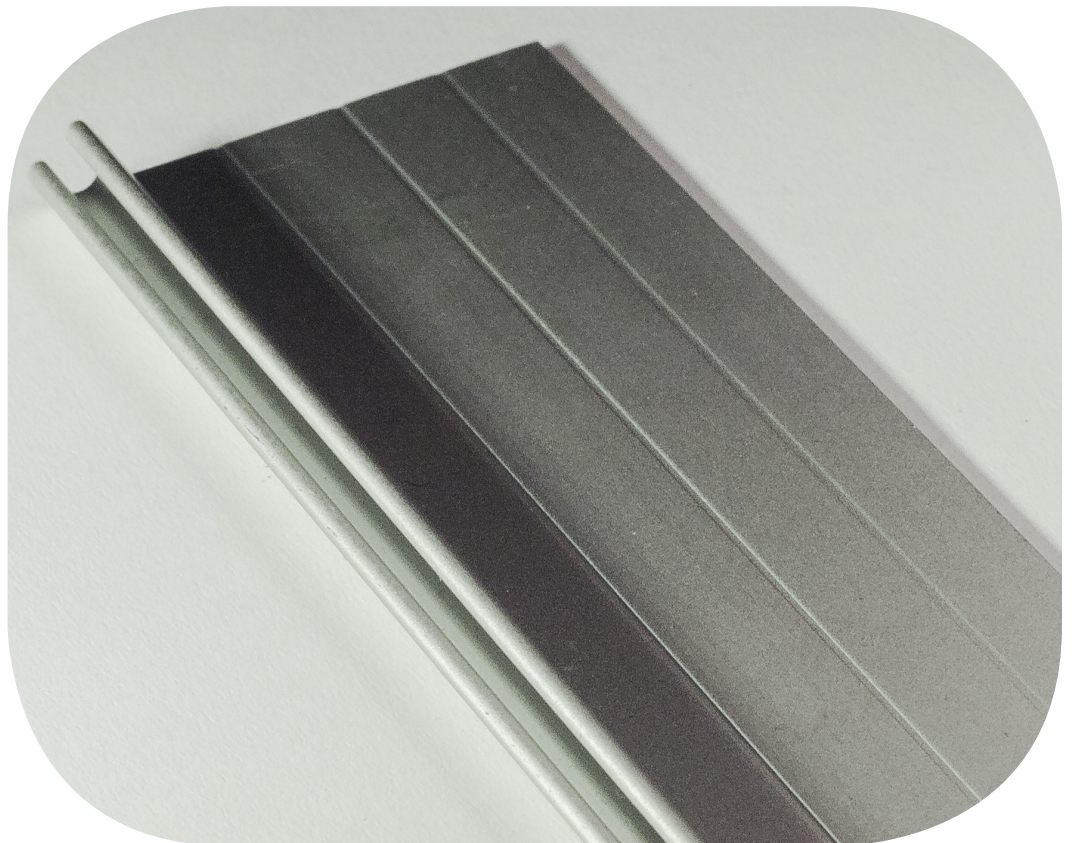


Angle Carrier 55°



BBS5550V3000

The angle off-set carrier comes in a 50mm backing.



The angle off-set carrier comes in a 50mm backing

All carriers come in a clear anodised finish

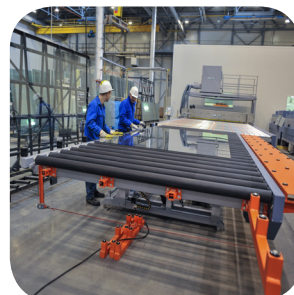
Code	Description	Height mm	Length
BB103000	Galv. Brush	10.00	3.00 m
BB133000	Galv. Brush	13.00	3.00 m
BBF133000	Galv. Brush & Fin	13.00	3.00 m
BB163000	Galv. Brush	16.00	3.00 m
BB193000	Galv. Brush	19.00	3.00 m
BBF193000	Galv. Brush & Fin	19.00	3.00 m
BB193000FR	Galv. Flame Ret. Brush	19.00	3.00 m
BB253000	Galv. Brush	25.00	3.00 m
BBF253000	Galv. Brush & Fin	25.00	3.00 m
BB253000FR	Galv. Flame Ret. Brush	25.00	3.00 m
BB303000	Galv. Brush	30.00	3.00 m
BB373000	Galv. Brush	37.00	3.00 m
BB403000	Galv. Brush	40.00	3.00 m
BB503000	Galv. Brush	50.00	3.00 m
BBF503000	Galv. Brush & Fin	50.00	3.00 m
BB503000FR	Galv. Flame Ret. Brush	50.00	3.00 m
BB753000	Galv. Brush	75.00	3.00 m

Code	Description	Back mm	Length
BBSH503000	Alum. H Carrier 0°	50	3.00 m
BBSF503000	Alum. F Carrier 90°	50	3.00 m
BBS3000	Alum. H Carrier 0°	20	3.00 m
BBSF3000	Alum. F Carrier 90°	20	3.00 m
BBS5550V3000	Alum. Angle Carrier 55°	50	3.00 m

Code	Brush & Carrier Kit	Brush H mm	Length
BBS300013N	Alum. H Carrier 0°	13	3.00 m
BBS300019N	Alum. H Carrier 0°	19	3.00 m
BBS300025N	Alum. H Carrier 0°	25	3.00 m
BBS300030N	Alum. H Carrier 0°	30	3.00 m
BBS300050N	Alum. H Carrier 0°	50	3.00 m
BBSF300013N	Alum. F Carrier 90°	13	3.00 m
BBSF300019N	Alum. F Carrier 90°	19	3.00 m
BBSF300025N	Alum. F Carrier 90°	25	3.00 m
BBSF300030N	Alum. F Carrier 90°	30	3.00 m
BBSF300050N	Alum. F Carrier 90°	50	3.00 m

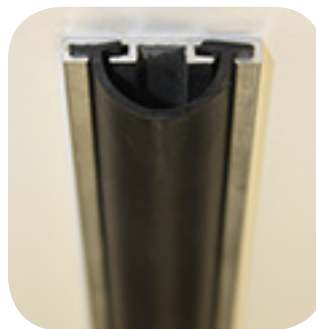
* Stainless steel backing and other combinations available upon request

* Kits available in Flame Retardant (NFR), Flame Retardant = FR





- Roller door seal for along the bottom of garage doors (Bristle Brush typically goes along the sides)
- Flame Retardant available (FR)



Code	Description	Width mm	Roll Size m
RDS3653000AL	ROL DR 365X3000 AL R/DOOR SEAL 365 X 3000mm. E3	carrier	3
DRDS45	DYN ROL DR 45 DYN ROLLER DOOR SEAL 45MM PT	45	50
DRDS45FR	G/DOOR SEAL 45MM F/R G/DOOR SEAL 45MM F/RETARD #2	45	75
DRDS80	DYN ROL DR SEAL 2003 DYN ROLLER DOOR SEAL 80MM P	80	50
DRDSFPS	SANT FIN DOOR SEAL SANTOPRENE FIN DOOR SEAL #F2	15	200

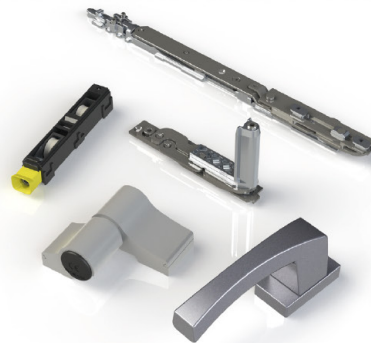


Schlegel

SCHLEGEL INTERNATIONAL PRODUCT PORTFOLIO



Schlegel Sealing Systems



Giese Hardware Systems

Schlegel International



Head Office:

44 Riverside Road Chipping Norton NSW 2170
Ph: +61 2 8707 2000 Fax: +61 2 8707 2070
Email: info.au@schlegel.com

Victoria:

44 Riverside Road Chipping Norton NSW 2170
Ph: +61 2 8707 2000 Fax: +61 2 8707 2070
Email: info.au@schlegel.com

Queensland:

44 Riverside Road Chipping Norton NSW 2170
Ph: +61 2 8707 2000 Fax: +61 2 8707 2070
Email: info.au@schlegel.com

New Zealand:

Burrett Business Park, 10d Burrett Ave
Penrose, Auckland 1061
Ph: +64 9 478 4001 Fax: +64 9 478 4002
Email: salesnz@schlegel.com

Western Australia:

3 / 45 Truganina Road Malaga WA 6090
Ph: +61 8 9224 9624 Fax: +61 8 9248 4855
Email: saleswa@schlegel.com

ASEAN:

1 Commonwealth Lane
#06-18, One Commonwealth
Singapore 149544
Ph: +65 6344 9288
Email: info.sg@schlegel.com

Care has been taken to ensure that the contents of this publication are accurate, but Schlegel and its subsidiary companies do not accept responsibility for errors or for information that is found to be misleading. Suggestions for, or description of, the end use or application of products or methods of working are for information only. All dimensions are in mm and are nominal. Schlegel reserve the right to change specification without prior notice.

Schlegel's names and logos and all related trademarks (including 'SCHLEGEL', 'SCHLEGEL Red Square Logo', 'Red Square Logo', trade names, and other intellectual property are the property of Schlegel Acquisition Holdings Limited trading as Schlegel International and cannot be used without its express prior written permission. All rights reserved.

© Schlegel Acquisition Holdings Limited trading as Schlegel International 2014.

May 16 | V1 | BB

www.schlegel.com > 8